



# Tyne Estuary Partnership Feasibility Study Executive Summary



## Document Information

Lead organisation and address	Groundwork NE & Cumbria Lobley Hill Community Centre, 47-49 Scafell Gardens, Gateshead NE11 9LS
Enquiries may be addressed to	Lisa Stephenson
Phone number	07912 280846
Email address	Lisa.stephenson@groundwork.org.uk
Project reference number	NE110
Title	Tyne Estuary Partnership Feasibility Study
Lead author	Lisa Stephenson
Contributing authors	Florencia Lezcano-Winton Matt Machouki Lucas Robinson
Web links	
Interactive map of opportunities	<a href="https://tyneestuary.stickyworld.com/room/presentation?roomid=1#landing/home">https://tyneestuary.stickyworld.com/room/presentation?roomid=1#landing/home</a>
Further information	<a href="https://www.groundwork.org.uk/Sites/northeast/news/tyne-estuary-partnership-nec">https://www.groundwork.org.uk/Sites/northeast/news/tyne-estuary-partnership-nec</a>
Full report available on request from	Lisa.stephenson@groundwork.org.uk
Set out as follows	Part 1 – Introduction Part 2 – Strategic Context Part 3 – Overview of Opportunities Part 4 – Priority Sites Part 5 – Recommendations & Action Plan Part 6 – Appendix

## Executive Summary

### Introduction

Groundwork NE & Cumbria (Groundwork) were commissioned by the Environment Agency (EA) to undertake a feasibility study to identify opportunities for environmental and economic enhancements to the Tyne Estuary. This covers the 38km tidal reach, from the mouth of the Tyne to Wylam. The study draws on findings of technical surveys carried out by the University of Hull and strategic partnership consultation carried out by Groundwork. Due to the predominantly urban nature of the Tyne Estuary the report focuses on planned development sites and opportunities for interventions to enhance water and environmental quality; with important economic, health and wellbeing benefits. The result is the formation of a new, strategic, Tyne Estuary Partnership; established to identify, shape and influence estuary enhancements.

The River Tyne is one of the most iconic and well known rivers in the UK. Over the years there has been significant investment to improve the river. Benefits can be seen by improvements in biodiversity and the Tyne Estuary becoming a focal point for economic activity that continues to develop along the river. It supports thriving businesses, up to £multi-million of planned developments and is often the backdrop for visitor attractions and large cultural events such as the Great Exhibition of the North. However, there are still significant pressures impacting the river that can be addressed.

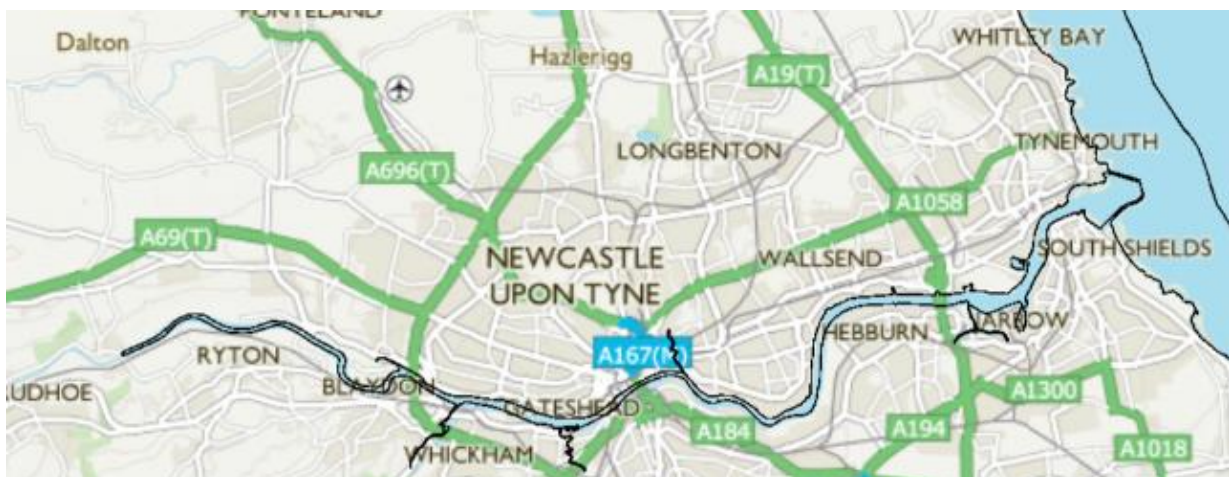
There is now an ambition for the Tyne Estuary Partnership to champion further improvements over the next 10 years; bringing benefits to businesses, communities, and the environment. By working in partnership we will identify opportunities for sustainable environmental and economic improvements to the Tyne Estuary; unlocking investment to ensure the River Tyne continues to be an internationally significant River.

### Vision

As this is a feasibility study a formal vision has not been established. The working vision is:

## The Tyne Estuary Partnership: Developing a Healthy and Vibrant River Estuary

### Tyne Estuary: Mouth of the Tyne to tidal limit at Wylam



## Aims

Tyne Estuary Partnership aims are:

### 1. Develop a Partnership

- ✔ A strong, strategic, influential partnership invested in long term environmental and economic enhancement of the iconic estuary.

### 2. Estuary Enhancements

- ✔ Ecological and biodiversity improvements, meeting WFD objectives\* and environmental net gain such as bank softening of estuary edges to reduce silting, pollution and improve water quality.

### 3. Wider Benefits

- ✔ Realising the multiple wider benefits that joined up action can achieve such as natural capital gains, health and wellbeing improvements, education, social, cultural and heritage benefits.



## Tyne Estuary Partnership Feasibility Study

Led by Groundwork the Tyne Estuary Partnership has identified 77 enhancement opportunities for the Tyne, with an immediate focus on what can be achieved in the next 2 years and consideration of longer term benefits. This will deliver projects to improve water and river quality moving towards 'Good Ecological Potential' (GEP) by 2027.

The map below illustrates the location of the Short Term Priority Projects; identified by red dots (1-3 years, already in development) and Medium Term Priority Projects; identified by purple dots (4+ years, improvement opportunity but not imminent).



These projects will improve the river via:

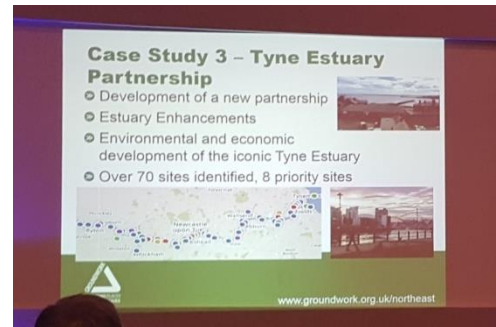
- |                                         |                                   |
|-----------------------------------------|-----------------------------------|
| ✔ Greening the river banks              | ✔ Improving access                |
| ✔ Managing surface water and drainage   | ✔ Increasing economic activity    |
| ✔ Alleviate flooding                    | ✔ Attracting investment           |
| ✔ Preserving and restoring habitats     | ✔ Hosting more tourism and events |
| ✔ Blue-green infrastructure development | ✔ Monitoring the benefits.        |

\*Water Framework Directive (WFD): a DEFRA commitment requiring all rivers to achieve good water quality status by 2027.

## The Partnership

The partnership has over 60 members covering 7 sectors including:

- ✔ Statutory agencies and authorities
- ✔ Developers
- ✔ Ports, harbours and marinas
- ✔ Private sector/ business membership organisations
- ✔ Environmental, educational and community
- ✔ Culture, heritage and tourism
- ✔ University and research



## Partnership Pledge

A Partnership Pledge has been developed setting out environmental and economic enhancement goals of the Tyne Estuary Partnership. It provides a simple, but effective statement to bring partners together to collectively tackle challenges that the Tyne Estuary faces. See the full report for details.

## Delivering the Tyne Estuary Partnership

The EA has allocated indicative seed funding for further development and delivery of Tyne Estuary Partnership during 2019/20. This will be matched with capital and revenue funding identified and contributed by Groundwork and partners. Over time such partnership approaches to development can lead to £multi-million schemes. Specific opportunities for funding are detailed in the full report.

It is proposed that 3 or 4 different trial sites are delivered over a 2 year pilot scheme, assessing impact, effectiveness and value for money.

## Key Recommendations

- ✔ Partnership development; vision, broader representation, action
- ✔ Deliver a joined up approach to environmental, economic, leisure and tourism, culture and heritage enhancements
- ✔ Consider net capital gains including societal, economic, education and health benefits.
- ✔ Real habitat improvements in new developments.
- ✔ Developing a 'green corridor'; floating pontoons, new jetties, greening of walls and habitat creation to increase connectivity.
- ✔ Greening of roofs; in new developments and retrofitting with aesthetic and ecological benefits.



Enhancements must be developed with permissions, consents and any constraints in mind. These largely include land ownership, space, contaminated land and ongoing maintenance.



## Priority Projects

Seven priority projects have been identified as illustrated below and on the previous map. Together they will enhance 38km of river and help to create 16 hectares of new habitats. When delivered in partnership they present significant opportunities for human, natural capital and economic benefits with associated matched funding possibilities.

Project	Partners	Budget	Opportunities	Outcome	Timescale
Metro Green	Gateshead Council.	£200,000	<ul style="list-style-type: none"> <li>Habitat creation</li> <li>Ecology enhancement</li> <li>Increased natural capital</li> </ul>	<ul style="list-style-type: none"> <li>3.8km river enhanced.</li> <li>Flood defence</li> </ul>	2020-2021 onwards
Forth Yards	NE1, Newcastle City Council, Local Developers.	£150,000	<ul style="list-style-type: none"> <li>Manage/ restore intertidal zone</li> <li>Manage/ resort habitats</li> <li>Habitat creation</li> <li>Enhance ecology</li> </ul>	<ul style="list-style-type: none"> <li>600m river enhanced.</li> <li>Flood defence</li> <li>Surface water management.</li> </ul>	2020-2021 onwards
Newcastle/ Gateshead Quayside	NE1, Newcastle City Council, NGL.	£240,000	<ul style="list-style-type: none"> <li>High profile intervention</li> <li>Aesthetic green corridor</li> <li>Habitat creation</li> <li>Ecology enhancement</li> <li>Tourism/ events/ increase dwell time</li> </ul>	<ul style="list-style-type: none"> <li>1km of river enhanced.</li> <li>Flood defence.</li> </ul>	2019-2020 onwards
Tidal Ouseburn	Ouseburn Trust, Local Developers.	£100,000	<ul style="list-style-type: none"> <li>Habitat creation</li> <li>Ecology enhancement</li> <li>Aesthetic improvement</li> <li>Tourism/ events/ increase dwell time</li> </ul>	<ul style="list-style-type: none"> <li>1km of river enhanced.</li> <li>Flood defence.</li> <li>Surface water management.</li> </ul>	2019-2020 onwards
Walker Riverside Park	Newcastle City Council, Port of Tyne.	£200,000	<ul style="list-style-type: none"> <li>Habitat creation</li> <li>Ecology enhancement</li> <li>Increased natural capital</li> </ul>	<ul style="list-style-type: none"> <li>2km of river enhanced.</li> <li>Flood defence.</li> </ul>	2019-2020 onwards
Howdon Wetlands	Northumbrian Water, North Tyneside Council, Port of Tyne.	£100,000	<ul style="list-style-type: none"> <li>Habitat enhancement</li> <li>Ecology enhancement</li> <li>Manage/ restore intertidal zone</li> <li>Bank rehabilitation</li> </ul>	<ul style="list-style-type: none"> <li>33,000m<sup>2</sup> of river enhanced.</li> <li>Flood defence.</li> </ul>	2019-2020 onwards
Smith's Doc	NorthTyneside Council, Local Developers.	£200,000	<ul style="list-style-type: none"> <li>Habitat creation</li> <li>Ecology enhancement</li> <li>Increased feeding/ roosting time</li> </ul>	<ul style="list-style-type: none"> <li>11,000m<sup>2</sup> of river enhanced.</li> <li>Surface water management</li> </ul>	2020-2021 onwards

Project opportunities are described in detail in Part 4: Priority Sites of the full report.

Estimated budgets are to deliver full schemes including EA and matched funding. Proposed improvements can be scaled back and positive interventions delivered for smaller budgets; especially as pilot sites to trial interventions over the next 2 years. Options include:

- ✔ £30,000 – trial sites at Newcastle Quayside and Metro Green including floating pontoons, fish refugia and otter holts. Education, engagement, natural capital gains.
- ✔ £50,000 – more extensive habitat and aesthetic improvements at the same sites.
- ✔ £70,000 – further trial sites and green edges at Tidal Ouseburn, education, heritage.
- ✔ £100,000 - extend the trials to include floating vegetated islands either at Howdon Wetlands or Smith's Dock, or consider master-planning work for Walker Park.

These priorities are flexible dependent on progress of new developments, opportunities for environmental enhancement in plans and availability of targeted matched funding.



