

Groundwork Landscape Architecture

Micklefield Diamond Jubilee Play Area

Leeds

Completed site



Site before construction



Hard details



Hard details



Completed site



Completed site



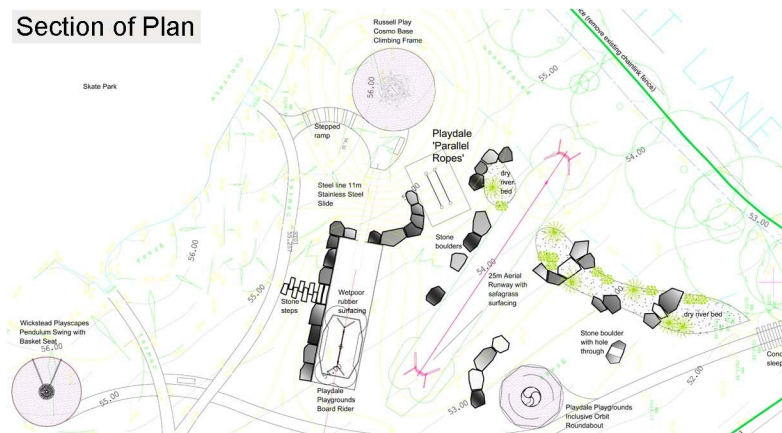
Project Description

The Micklefield Recreation Ground had become a featureless grassed space with some areas having become overgrown and unsightly.

Groundwork Landscape Architecture held a series of consultation events, with particular effort made to gather the views of the local young people. Their ideas and opinions directly influenced the final design which includes an impressive 10m slide, zip wire, climbing wall, swings, roundabout, and informal play features such as grassed mounds and boulders. Other aspects of the site have also been improved, such as pathways, seating and planted areas.

It is hoped the combination of traditional play equipment and informal play features will encourage imaginative play, and that the new facilities will attract a broader range of users.

Section of Plan



Client:

Micklefield Regeneration Partnership
Micklefield Parish Council

Budget:

Approx. £120k

Services:

- Community Consultation
- Survey & Analysis
- Planning
- Landscape Design
- Detailed Design
- Production of Tender Documentation
- Funding Package Secured

Completion Date:

May 2012

Case Study