

WHITE CITY ESTATE

MASTERPLAN - WHOLE AREA

Nourish is a large scale project being delivered as part of the Good Growth Fund, a Mayor of London initiative to promote sustainable development of London.

The London Borough Hammersmith and Fulham is working with Groundwork London to talk to residents, community organisations and businesses about how we can enhance housing estates using retrofit SuDS, Green Infrastructure and community food growing.

- We would like to know what you think of your local green spaces, and how you think we should use this opportunity to improve spaces.
- We know green spaces are important because they can improve health and wellbeing, the environment and the character of an area, and reduce the risk of flooding.
- We want to know what you think our priorities for improvement should be.
- We want the whole community to become engaged with the full process of growing, cooking and eating healthy food.



KEY:

- SuDS FEATURES
- SMALL MOUNDS
- WILDFLOWER / BULB
- POTENTIAL FOOD GROWING AND NATURAL PLAY AREAS
- POTENTIAL INFORMAL / NATURAL PLAY AREAS

CONTACT US!

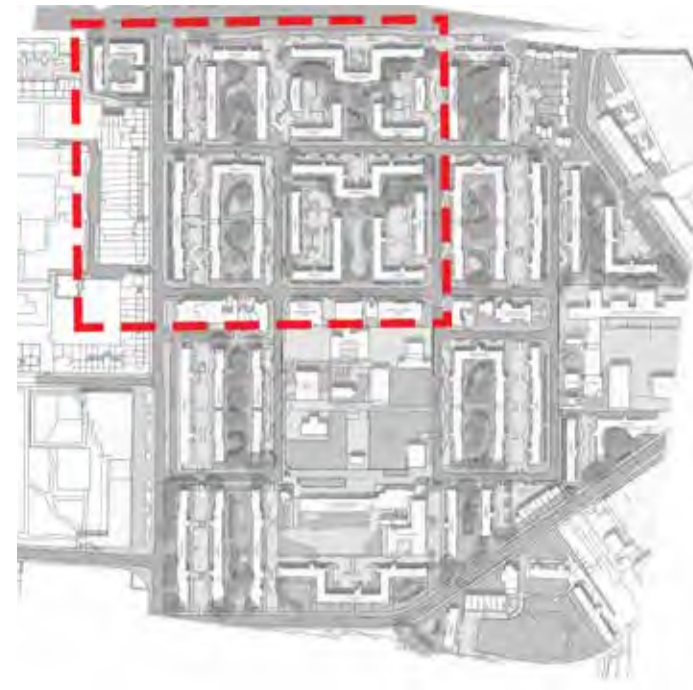
We are inviting everyone who uses spaces in these areas to take part in our online survey.

Visit www.surveymonkey.com/r/L2DDBJW to find out more and take part in our survey – closing date 31/08/2018.






Email Groundwork London if you have any questions via nourish@groundwork.org.uk

WHITE CITY ESTATE

MASTERPLAN - NORTH WEST



KEY:

-  SuDS FEATURES
-  SMALL MOUNDS
-  WILDFLOWER / BULB
-  POTENTIAL FOOD GROWING AND NATURAL PLAY AREAS
-  POTENTIAL INFORMAL / NATURAL PLAY AREAS

Nourish is a large scale project being delivered as part of the Good Growth Fund, a Mayor of London initiative to promote sustainable development of London.

The London Borough Hammersmith and Fulham is working with Groundwork London to talk to residents, community organisations and businesses about how we can enhance housing estates using retrofit SuDS, Green Infrastructure and community food growing.

- We would like to know what you think of your local green spaces, and how you think we should use this opportunity to improve spaces.
- We know green spaces are important because they can improve health and wellbeing, the environment and the character of an area, and reduce the risk of flooding.
- We want to know what you think our priorities for improvement should be.



CONTACT US!

We are inviting everyone who uses spaces in these areas to take part in our online survey.

Visit www.surveymonkey.com/r/L2DDBJW

to find out more and take part in our survey - closing date 31/08/2018.

Email Groundwork London if you have any questions via nourish@groundwork.org.uk



WHITE CITY ESTATE

MASTERPLAN - NORTH EAST



Nourish is a large scale project being delivered as part of the Good Growth Fund, a Mayor of London initiative to promote sustainable development of London.

The London Borough Hammersmith and Fulham is working with Groundwork London to talk to residents, community organisations and businesses about how we can enhance housing estates using retrofit SuDS, Green Infrastructure and community food growing.

- We would like to know what you think of your local green spaces, and how you think we should use this opportunity to improve spaces.
- We know green spaces are important because they can improve health and wellbeing, the environment and the character of an area, and reduce the risk of flooding.
- We want to know what you think our priorities for improvement should be.

CONTACT US!

We are inviting everyone who uses spaces in these areas to take part in our online survey.

Visit www.surveymonkey.com/r/L2DDBJW

to find out more and take part in our survey - closing date 31/08/2018.

Email Groundwork London if you have any questions via nourish@groundwork.org.uk



WHITE CITY ESTATE

MASTERPLAN - SOUTH WEST



Nourish is a large scale project being delivered as part of the Good Growth Fund, a Mayor of London initiative to promote sustainable development of London.

The London Borough Hammersmith and Fulham is working with Groundwork London to talk to residents, community organisations and businesses about how we can enhance housing estates using retrofit SuDS, Green Infrastructure and community food growing.

- We would like to know what you think of your local green spaces, and how you think we should use this opportunity to improve spaces.
- We know green spaces are important because they can improve health and wellbeing, the environment and the character of an area, and reduce the risk of flooding.
- We want to know what you think our priorities for improvement should be.

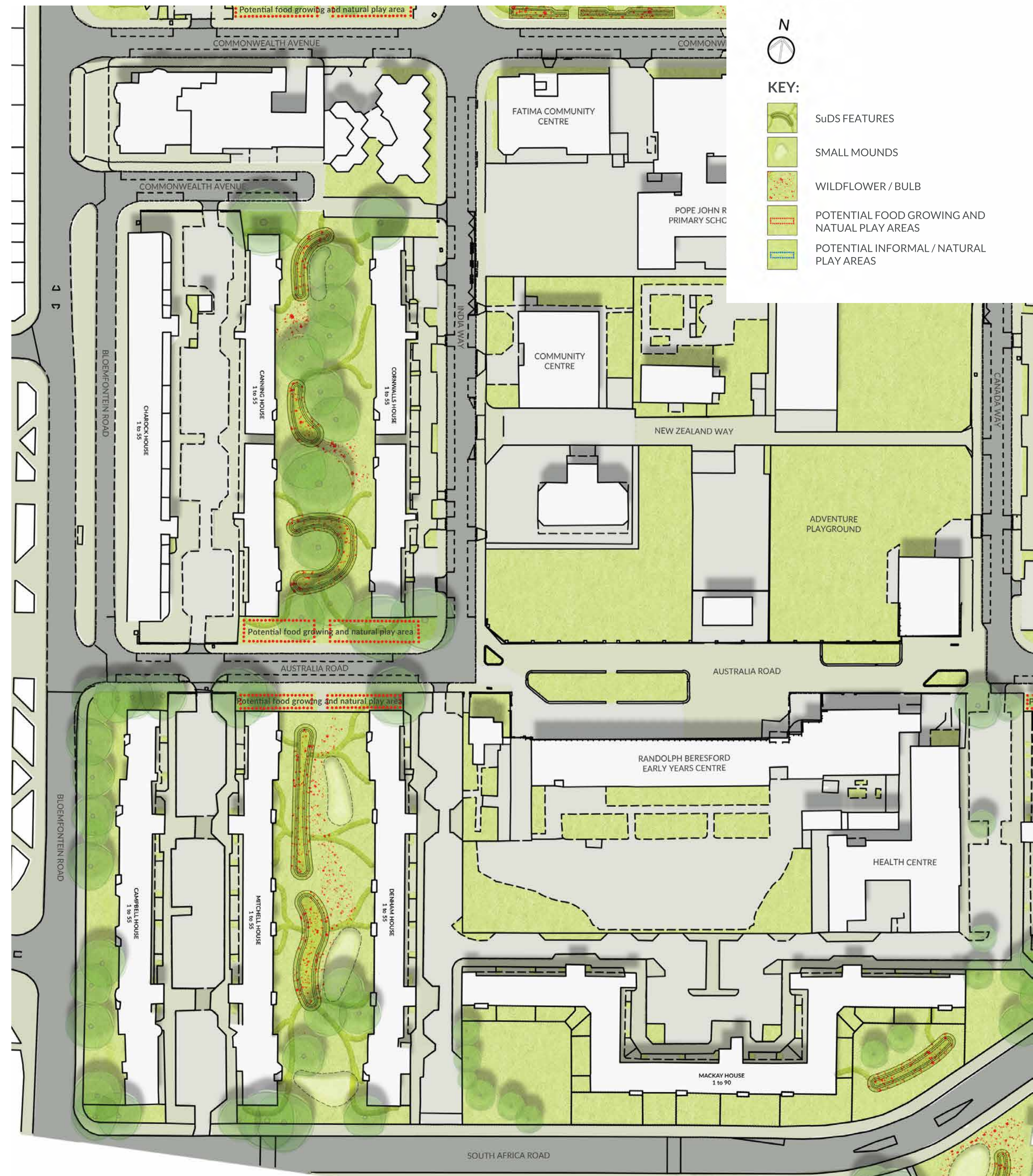
CONTACT US!

We are inviting everyone who uses spaces in these areas to take part in our online survey.

Visit www.surveymonkey.com/r/L2DDBJW

to find out more and take part in our survey - closing date 31/08/2018.

Email Groundwork London if you have any questions via nourish@groundwork.org.uk



WHITE CITY ESTATE

MASTERPLAN - SOUTH EAST



Nourish is a large scale project being delivered as part of the Good Growth Fund, a Mayor of London initiative to promote sustainable development of London.

The London Borough Hammersmith and Fulham is working with Groundwork London to talk to residents, community organisations and businesses about how we can enhance housing estates using retrofit SuDS, Green Infrastructure and community food growing.

- We would like to know what you think of your local green spaces, and how you think we should use this opportunity to improve spaces.
- We know green spaces are important because they can improve health and wellbeing, the environment and the character of an area, and reduce the risk of flooding.
- We want to know what you think our priorities for improvement should be.

CONTACT US!

We are inviting everyone who uses spaces in these areas to take part in our online survey.

Visit www.surveymonkey.com/r/L2DDBJW

to find out more and take part in our survey - closing date 31/08/2018.

Email Groundwork London if you have any questions via nourish@groundwork.org.uk



THE NOURISH PROJECT

GREEN INFRASTRUCTURE AND SuDS



Wildlife habitat, colour & greenery



Swale - planted drainage channel



Wildlife habitat, colour & greenery



Paved & planted drainage channels



Food growing space



SuDS basin planted with wildflower meadow

THE NOURISH PROJECT

NATURAL PLAY AND FOOD GROWING AREAS

Groundwork have been consulting with the TRA and local community groups about the Whit City estate. Initial feedback from residents to creating spaces for food growing and informal play at White City has been positive.

We have identified two locations at Hastings/Wolfe House and Hargreaves/Havelock/Hudson House where informal play on the way could be developed. Greenspace on both areas is already easily accessed by footpaths.

We have also identified locations at Blaxland, Phipps, Canning/Cornwallis, Denham/Mitchell, Champlain and Davis/Evans Houses where there is enough space to create sociable 'garden' spaces for people to enjoy. We believe these gardens could be more actively used and productive, and bring benefits to residents and wildlife. The spaces are on a north south axis, with lots of sun to the south facing walls. They can be easily accessed directly from the footpath and would add to the quality of the streetscene.

Image of how communal garden spaces could look, providing food growing, green walls and social spaces

