



CANDIDATE PACK



WILD OYSTERS PROJECT OFFICER

Who are we?

Our vision at Groundwork is of a society of sustainable communities which are vibrant, healthy and safe, which respect the local and global environment, and where individuals and enterprise prosper.

Our mission is to inspire people and deliver positive sustainable change in places of need across the North East and Cumbria. We're passionate about creating a future where every neighbourhood is vibrant and green, every community is strong and able to shape its own destiny and no-one is held back by their background or circumstances.

We work across the North East and Cumbria helping communities find practical sustainable solutions to the challenges they face. We provide training and create jobs, reduce energy and waste, reconnect people with nature and transform whole neighbourhoods. We are passionate about changing places and lives for the better. With over 200 staff across the region, and over 30 years' experience, we are always keen to hear from people with the drive and determination to make a difference and have lots of ways you can get involved. Many of our senior managers and executive team began their careers as volunteers or entry level project staff. By providing a range of training and continuous professional development opportunities at the local, regional and national level we are able to recruit and retain the very best.

Each year Groundwork makes an incredible difference to communities across the North East and Cumbria. We work on hundreds of individual projects each year, supporting disadvantaged communities but what's most important is how we change people's lives. Our local programmes and services are tailored to the needs of partners and communities in each locality. When all that local activity is added together, it becomes a major force for regional change.

We want you to be yourself at Groundwork and value everything that makes you unique. We recognise and celebrate people's differences and together we make Groundwork a great place to work. Groundwork are committed to safeguarding and protecting the welfare of children, young people and vulnerable adults, and expect all staff and volunteers to share this commitment.



BLUE MARINE
FOUNDATION



www.groundwork.org.uk



@GWKNE



@GWKNE



What are we looking for?

Wild Oysters is an exciting new project, developed by the Zoological Society of London (ZSL), Blue Marine Foundation (BLUE) and British Marine. The project will take place over three years, having started in June 2020 the project will create Oyster Rehabilitation Hubs in three locations across the UK- Tyne & Wear in England, North Wales and West Coast of Scotland. At each hub Oyster Nurseries will be installed across two Marinas, and we will restore the seabed by creating Oyster Reefs. The Oyster Nurseries form an important tool in our education and engagement programme, using the Oyster Nurseries we will engage local communities and schools with native oyster biology and culture, and with wider marine conservation issues.



The Tyne & Wear Wild Oysters Local Project Officer will be employed by Groundwork NE & Cumbria and work closely with the Wild Oysters Project Manager based at ZSL and Technical Lead based at BLUE, to deliver the Wild Oysters at two marina sites and the near offshore environment, that collectively form the England Rehabilitation Hub.



Like us, you will love North East England and want it to thrive. You will be keen to learn and work as part of a team, and be enthusiastic for marine conservation charity initiatives and engagement of local communities in their environment.

What difference will you make in the role?

- » You'll implement the 'English Wild Oysters Rehabilitation Hub' supporting the installation of the native oyster nurseries and restoration of seabeds by creating Oyster Reefs
- » Play a key role in the engagement and education of our local communities, delivering regular public outreach and education sessions.
- » Lead citizen science-based monitoring and reporting to meet Wild Oyster project objectives.



Who you will be working for and with?



BLUE MARINE FOUNDATION



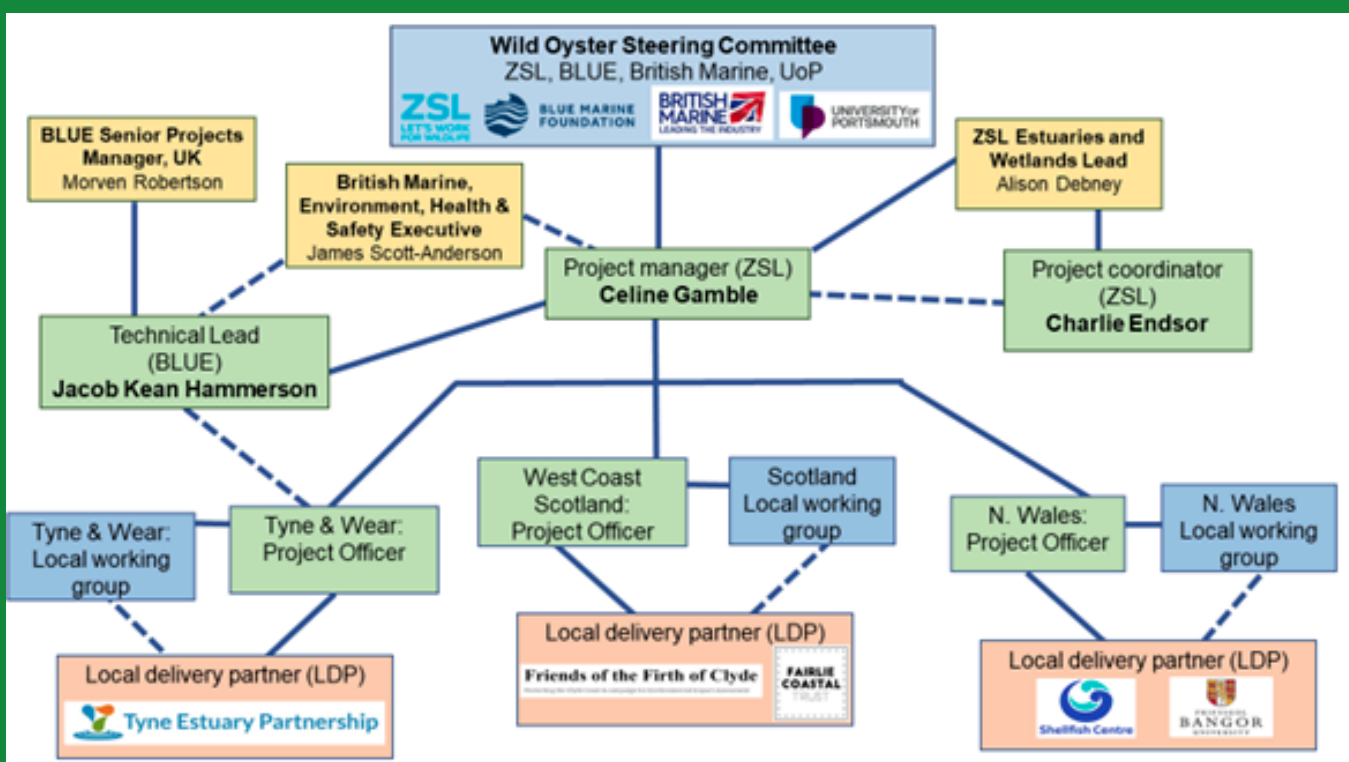
Groundwork is an organisation where everyone works together, works hard and takes collective responsibility and strives to make a difference to our local communities.

As a member of a dedicated Land and Communities team, you will be part of an enthusiastic and friendly project team supported by our Programme Manager. You will work together with the Wild Oysters Project Manager and Local Delivery Partner, The Tyne Estuary Partnership, to establish a local working group to provide local advice to the project for its successful delivery and long-term sustainability of the habitat restoration.

You'll work together with the Technical Lead from the Blue Marine Foundation to install oyster nurseries at the two British Marine Wild Oyster marina locations and will identify and enlist local schools, universities, community groups and businesses to engage them with the project.

You'll be looked after by our Groundwork Programme Manager but will report on a day to day basis to the the Local Project Officer will report to the ZSL Project Manager with respect to the Wild Oyster delivery.

This is an exciting new project engaging a range of experienced partners working together. The Diagram below illustrates the Wild Oyster delivery mechanism flowchart and the full structure below



What will your duties and responsibilities be?



- » Establish a local working group to provide local advice to the project for its successful delivery and long-term sustainability of the habitat restoration.
- » Organise meetings with the local working group to provide an update in the progress of the Rehabilitation Hub.
- » Maintain and build relationships and capacity with local stakeholders, including local schools, businesses and marine users.
- » Gather and share local knowledge relevant to the project and restoration activities being carried out.
- » Ensure that the project budget is appropriately spent, recorded, and reported on.
- » Work with the Technical Lead to install oyster nurseries at the two British Marine Wild Oyster marina locations.
 - » Be responsible for checking, maintaining and scientific monitoring of the oyster nurseries and environmental parameters of the marinas.
 - » Facilitate educational site visits, online sessions and deliver presentations within schools.
 - » Promote and communicate the project in the local community and online on social media channels, websites and blog posts.
 - » Provide progress reports to project management and report against indicators
 - » Host 'oyster gardening workshops' training citizen scientists and developing monitoring methods. Work with partners to develop community engagement events for the project



More detail of role content can be found in the Job Description contained in the Application Pack



What skills and experience do you need to apply?



- Experience of working as part of a science/ conservation/policy project and of delivering marine conservation or research projects
- Experience delivering educational outreach sessions and public engagement activities
- Experience carrying out fieldwork
- A good grasp of relevant conservation issues in the UK and in the marine/estuarine environment globally

- Excellent communication skills in written and spoken English
- An ability to communicate with energy and enthusiasm
- Computer literacy in MS office packages, specifically Word, Excel and PowerPoint
- Confidence in social / written media
- Ability to occasionally work out of office hours or over weekends to deliver fieldwork or to attend meetings
- A commitment to Equal Opportunities and Diversity in all work practices
- Full Driving Licence
- An appreciation and commitment to Health and Safety issues in the workplace

It would be desirable, but not essential, if you also have:

BSc/MSc or higher qualification in an appropriate field
Knowledge of the specific issues the project is addressing

What will we offer you...

- Competitive salary, currently £25,000 pro rata (£15,000 per annum)
- Part Time - 22.5 hours per week
- Excellent holiday entitlement of 25 days, rising to 26 days per annum plus public holidays
- Family friendly policies to support work/life balance and time off in lieu for out of hours work
- Business travel expenses
- Better health at work activities
- Access to a Cycle To Work
- A commitment to equality and diversity which ensures everyone can make best use of their skills, free from discrimination or harassment
- Staff life insurance scheme
- Friendly, team environment where we support each other to achieve





**WANT TO
APPLY?**



Great, all you need to do is complete the application pack available on our website, located here:

<https://www.groundwork.org.uk/about-groundwork/careers-across-groundwork/>

All completed applications should be sent to:

Email: HR.NorthEast@groundwork.org.uk

Tel: 01388 662 666



**BLUE MARINE
FOUNDATION**



Email: HR.NorthEast@groundwork.org.uk

Tel: 01388 662666

Post: Human Resources, Groundwork NE & Cumbria, Unit 14 Parsons Court, Welbury Way, Aycliffe Business Park, Newton Aycliffe, DL5 6ZE



www.groundwork.org.uk



@GWKNE



@GWKNE

