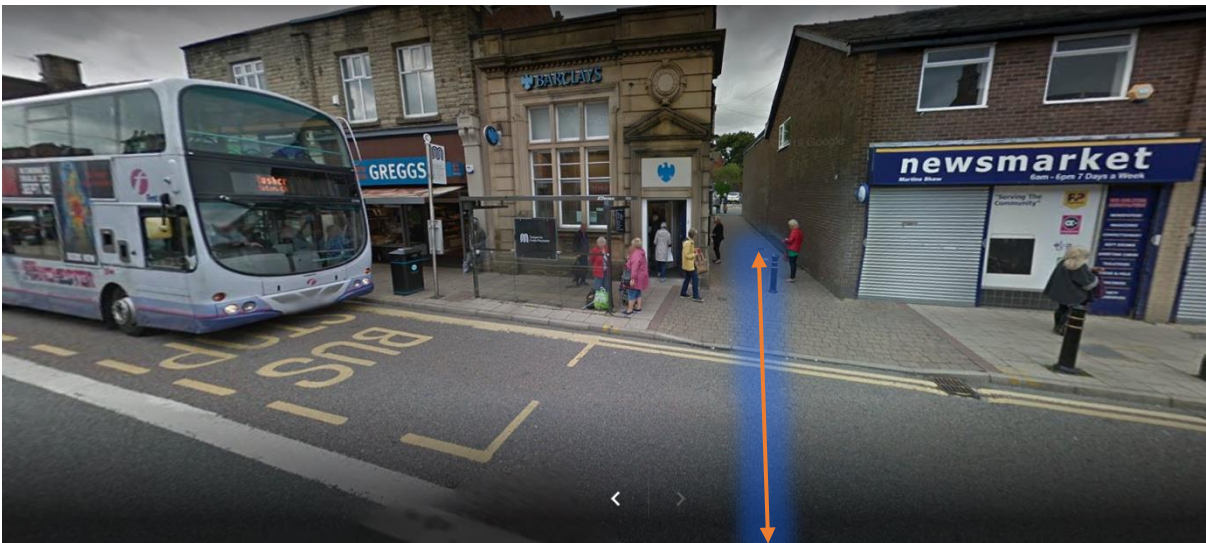


How to get to Shaw and Crompton Parish Hall (BUS)

- Go to bus stand F in Oldham bus station.
- Get either the 57 which will say it's going to Rochdale
- Get off on Market Street on the bus stop directly in front of Greggs on the left hand side.



- Once you get off at the above bus stop walk through the highlighted pathway.



- As you walk through the pathway you will see the above car park in front of you.
- Please enter car park and go right to the top and you should see the building below.



• How to get to Shaw and Crompton Parish Hall (TRAM)

- Go to either King Street, Oldham Central or Oldham Mumps Tram stop.
- Get off at Shaw and Crompton tram stop which will have a big mill in front of it.



- Once you're out of the tram station take a left and walk to the top of the road where you will see Shay Wake.
- Keep walking up past shay wake and you will see shops called Chicklets or Yummy Fried Chicken (YFC)



- Take a left onto this road and go straight across to the car park.
- As you walk through the pathway you will see the above car park in front of you.
- Please enter car park and go right to the top and you should see the building below.

