

# APPLYING FOR ESB COMMUNITY BENEFIT FUND

Tips for applicants



Energy for  
generations

# Content

## Introduction

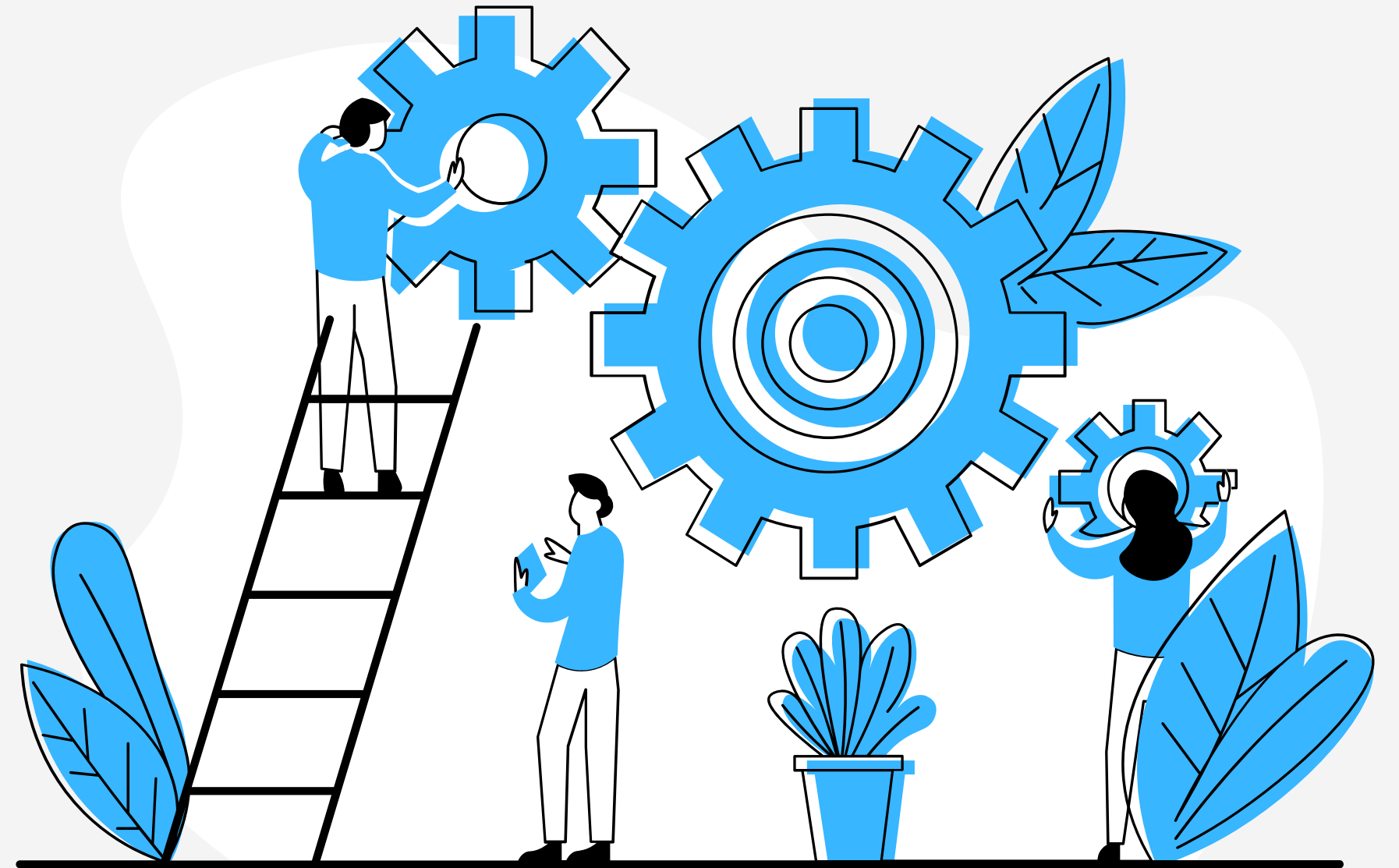
- Funding source
- Aim of the funding

## Criteria

- Location
- Themes
- Beneficiaries
- Group

## Application Form

- Budget
- Documents



# ESB Community Benefit Fund



The Wind Farm Community Funds were established by ESB and their joint venture partners, with the intention of helping the communities neighbouring our wind farms to become more sustainable through the support of positive local initiatives and activities.

[www.groundworkni-esb.com](http://www.groundworkni-esb.com)

# Aims



The objective of the ESB Community Fund is to support community projects which clearly address current and emerging local issues, needs and opportunities, while also seeking to develop and build upon existing initiatives.



# Criteria



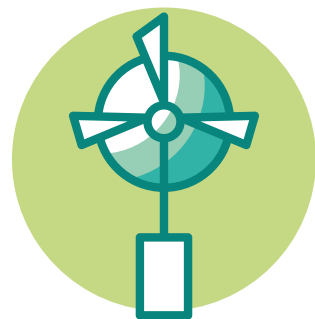
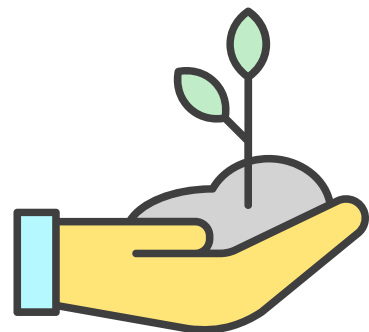
1. Location\*
2. Theme
3. Beneficiaries\*
4. Group

# 1. Location

Your project must be located within:  
10 km of Crockdun Wind Farm  
or 10 km of Crockagarran Wind Farm  
or 7 km of Carrickatane Wind Farm  
or 7 km of Curryfree Wind Farm  
or 7 km of English Wind Farm



## 2. Themes



Projects must focus on at least one of the following themes:

- Education and skills
- Health, safety and wellbeing
- Environment and habitat conservation
- Energy efficiency and sustainability
- Culture and heritage
- Recreation, sport and social inclusion

## 3. Beneficiaries



If your organisation is not located within the areas above, you must need to evidence that the primary beneficiaries of your project are from one of the above areas of benefit



## 4. Group

You must be:

- a registered charity;
- or voluntary/community sector organization;
- or sports or recreation club;
- or school

Note you need to have a group constitution or articles of association



# Application Form

Section 1: Details about your organisation

Section 2: Details about your project

Section 3: Budget

Section 4: Documentation

[www.groundworkni-esb.com](http://www.groundworkni-esb.com)



# Section 2: about your project

How can you evidence that it is indeed needed?

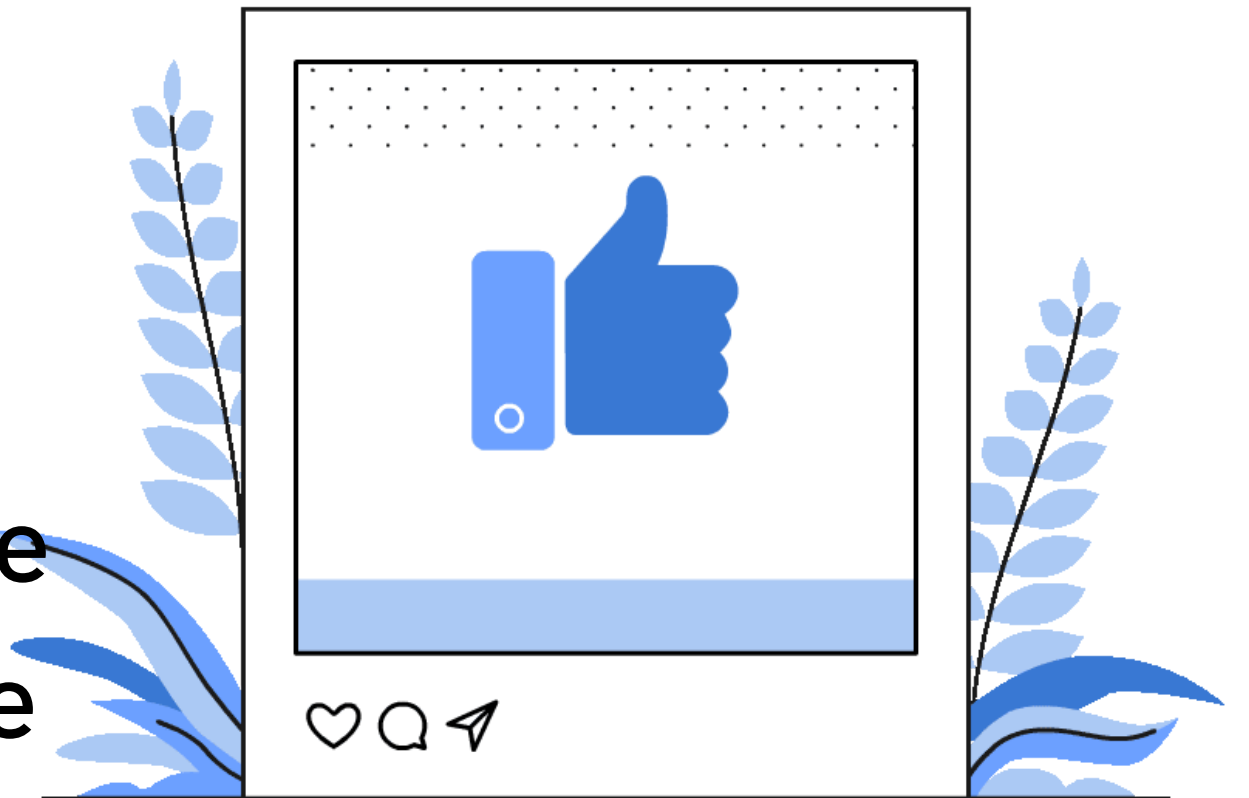
- Past
- Present
- Future



# Get the word out there

Reach out to other potential groups, clubs, beneficiaries.

Tip: host open nights, do online surveys, online conference calls, newsletter polls and keep the results at hand



# Sustainability

In reaching out to beneficiaries, you are also demonstrating that the proposed project will be sustainable.

Tips:

- Use the expertise of the committee and volunteers when delivering this project.
- Be realistic



# Section 3: Budgeting

Total cost of the project

How much do you require from ESB CBF?

If total cost is more than what you are asking for, how much do you have to match fund? and from where?



£625

How much ESB Wind Farm Community Fund funding are you seeking (include VAT if applicable)

£565

Please outline the project budget, highlighting which aspects are to be funded through the ESB Wind Farm Community Fund and any other match funding contributions. (NB quotations must be attached to all support costs outlined):

Item	Cost	ESB Community Fund contribution	Other funding secured (please detail)	Total
* gloves x 100	£90	90		
* hi vis jacket x50	£250	250		
* sandwiches, tea/coffee	£150	150		
* hall hire x2hrs	£60	0	£60 - community association donation	
* leaflet x100	£50	50		
* compostable bags	£25	25		
	£625	£565	£60	£625

+ Add Item

Back

Next

Save

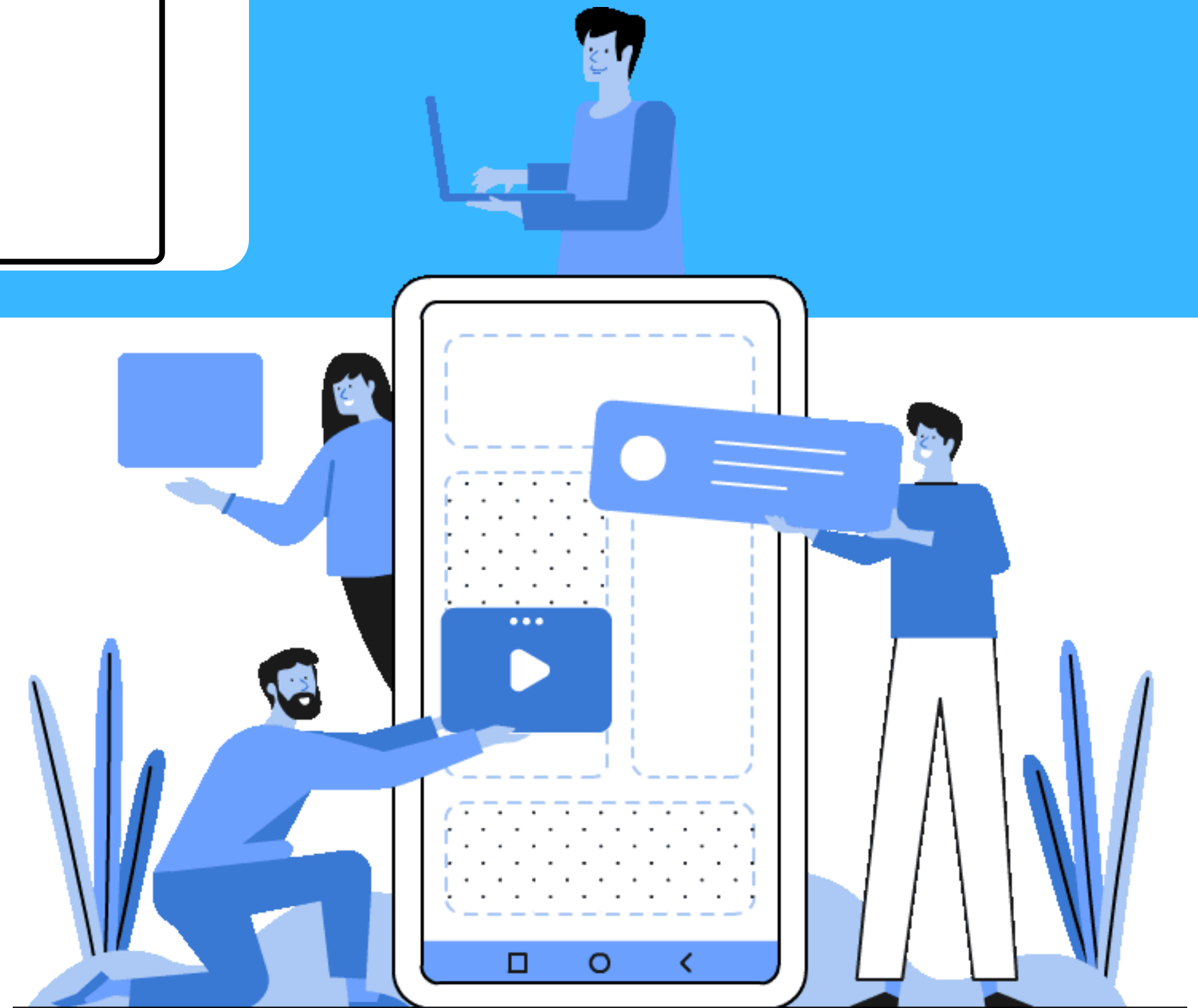
# Filling your application form

Start an application form

Try directly into form, or copy and paste from a MS Word/Note document.

Tip:

- Clarity and concision





# Supporting documents

- Constitution or articles of association
- Previous financial year accounts (signed)
- Latest bank statement of organisation applying
- Quotes demonstrating each item you are applying for
- 2 references supporting your project and your organisation



If applicable:

- Match funding confirmation
- NI Charity Commission registration
- Evidence of VAT status

# Thanks!

Don't forget to fill in the feedback survey

For more information about the ESB Community Benefit Fund, visit

[www.groundworkni-esb.com](http://www.groundworkni-esb.com)

[esbcommunityfund@groundworkni.co.uk](mailto:esbcommunityfund@groundworkni.co.uk)

