

MAKING SPACE FOR NATURE

'Making Space for Nature' includes indoor and outdoor activities for pupils to enjoy engaging with the nature on their doorstep. This will inspire pupil creativity whilst encouraging outdoor learning and well-being as they explore their own naturehood.

Activity 4: Nature treasure hunt

In this activity, you will use your map skills together with your newly gained knowledge of plants and trees to plan a treasure hunt for a friend or family member. Challenge them to find imagined buried gold!

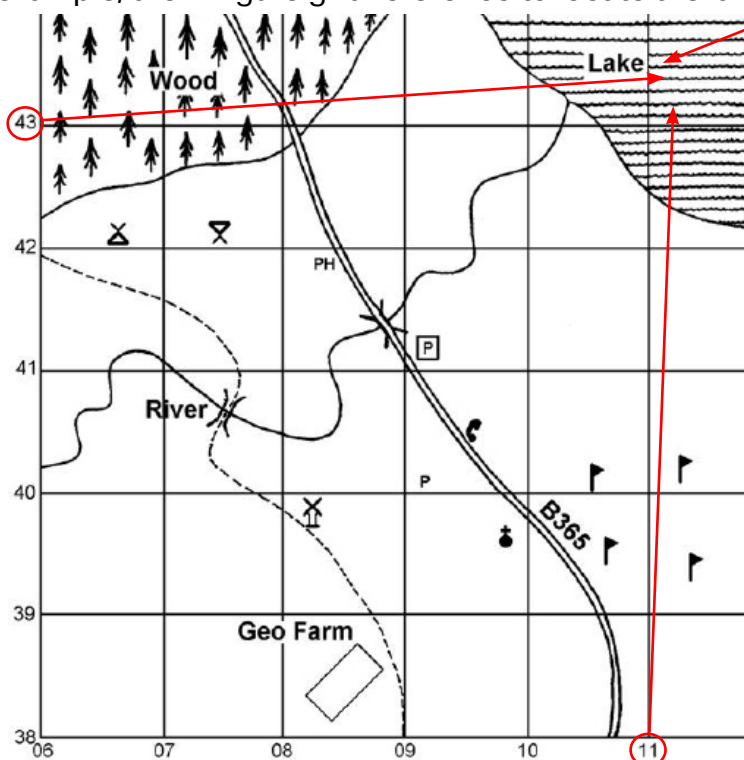
You will need the map you drew in Activity 1 (Where on Earth am I?). If you don't have it, print a new copy.

Task 1: Review map skills

A key (or a legend) on a map is a list of symbols that appear on the map.

Reading a map is like reading a graph with a horizontal X-axis and a vertical Y-axis. The grid lines on a map are called eastings (along the corridor) and northings (up the stairs). Remember go along the horizontal X-axis first and then up the vertical Y-axis.

For example, the 4-figure grid reference to locate the lake is 1143.



Legend:

	Wood
	Lake
	Bridge
	Camp Site
	Car park
	Picnic Site
	Public House
	Post Office
	Golf Course
	Church
	Windmill

MAKING SPACE FOR NATURE

Activity 4: Nature treasure hunt

Referring to the map on page 1, answer the following questions:

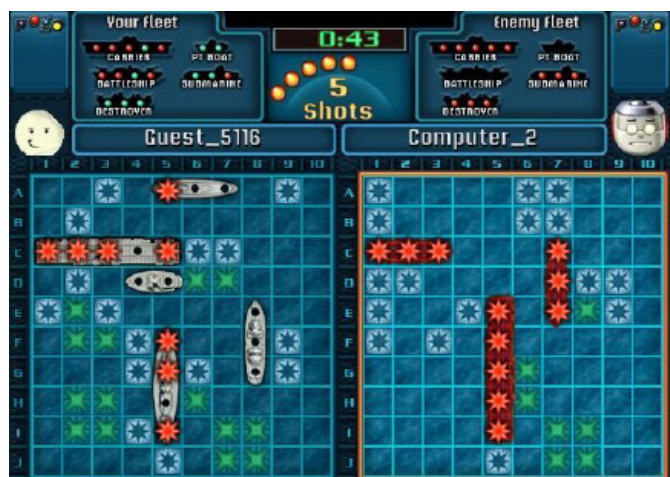
- Give a 4-figure grid reference for the bridge. _____
- Give a 4-figure grid reference for the Geo Farm. _____
- What is located in grid reference 0939? _____
- What is located in grid reference 0743? _____

Answers at end of activity

Task 1 (continued)

To practice using grid references play a game of battleship online.
Click "Start", place your ships, click the double arrow and then play!
Use the grid to try to sink your opponent's battleships.

<https://www.battleshiponline.org/>



MAKING SPACE FOR NATURE

Activity 4: Nature treasure hunt

Task 2: Create your hidden treasure map!

Imagine you buried some gold at the end of a rainbow.

Challenge a friend to find it! You will set them some clues and questions using nature as a guide. Using your map from Activity 1, you will return to this outdoor area and plan your treasure hunt.



YOU WILL NEED:

- Your map and map key from Activity 1
- A pencil or pen
- Your planning sheet for your clues (print page 4 or write in a notebook)
- Your clue sheet (print page 5 or write in a notebook)
- Mobile phone or iPad with SEEK app (if identifying new species) OR species ID sheets from Natural Treasures Activity 2

1. Do you remember the biodiversity you discovered in Activity 2? Choose a tree, bush or plant under which you have buried the gold. Looking carefully at your map, note the grid reference location and species name on your planning sheet on page 4. (If you can't remember the species name, you can use the SEEK app or the ID sheets.)

2. Referring to your map key, draw a symbol (tree/flower) for its location in the grid square.

3. Write clue 1 for your treasure hunt. To write a clue you will need to write:

- a) the species name
- b) the grid reference

For example: Clue 1: Find the oak tree in square 1123

4. Continue to find another 3 species of tree, plant or flower to add to your map. Draw a symbol on your map to mark its location.

5. Write three more clues (see planning sheet on page 4).

MAKING SPACE FOR NATURE

Activity 4: Nature treasure hunt

NATURE TREASURE HUNT by (insert first name)

PLANNING SHEET

A. Note the location of your buried gold. Grid reference square _____
Species name under which it is buried: _____

Referring to your map key, draw a symbol (tree/flower) for the species location in the grid square.

B. Write clues for your treasure hunt.
For example: Find the oak tree in grid square, 1223.

Extension: If you'd like to make your treasure hunt more fun, you can vary your clues, see below for suggestions. Write the four figure grid reference for the oak tree (choose your own tree species).

- What will you find in the square two squares north of grid reference 2012? (You choose which grid reference to use.)
- Using the key, in which square will you find the(insert species name)?
- You are now very close to the tree/plant/flower where the gold is buried! Can you guess its location?

Clue 1. _____

Answer 1: _____

Clue 2. _____





Answer 2: _____

Clue 3. _____

Answer 3: _____

Clue 4. _____

Answer 4: _____

MAP KEY	
PLACE	SYMBOL
Tree	
Flower	
Plant	
Playground	

Example map key

Use the map key that you created in Activity 1
(Where on Earth am I?) or create a new one.

MAKING SPACE FOR NATURE

Activity 4: Nature treasure hunt

NATURE TREASURE HUNT by (insert first name)

CLUE SHEET

Gold was buried at the end of a rainbow! Can you find it?

Using my map, you will answer the clues to discover nature's treasures in order to find the gold! It may help you to have a mobile phone or iPad with SEEK app OR the species ID sheets.

1. _____

Answer: _____

2. _____

Answer: _____

3. _____

Answer: _____

4. _____

Answer: _____

Task 1 answers a) 0841 b) 0838 c) church d) wood

MAKING SPACE FOR NATURE

Activity 4: Nature treasure hunt

Well done – you are ‘making space for nature’!

If you’re interested in other nature activities, you’ll find some here:

- www.goingwild.net
- <https://www.facebook.com/goingwild/>
- <https://twitter.com/goingwildnet?lang=en-gb>
- <https://wildlifetrusts.org/>
- <https://www.backyardnature.org/resources/>
- <https://www.wwf.org.uk/things-to-do-home>
- <https://mailchi.mp/johnmuirtrust.org/wildinside>
- <https://woodlandtrust.org.uk/search/?q=children&p=1>
- <https://rspb.org.uk/fun-and-learning/>