

# New Calthorpe Green Improvements

Groundwork London in collaboration with Camden Council (LBC) and the New Calthorpe Tenants and Residents' Association (TRA) have been working together to develop designs to improve the communal external spaces on the New Calthorpe Estate, with a focus on refreshing planting to provide a biodiverse and aesthetically pleasing landscape for residents to enjoy. Through community engagement, the proposed designs for Fleet Square, Wells Square Grow Zone, Well Square Play Zone, and Seddon Street focus on creating vibrant, functional, and environmentally-friendly spaces that reflect residents' needs.

The key priorities are:

- Enhancing biodiversity and planting
- Creating multi-use spaces for relaxation, socialising, gardening, and play
- Greening the estate to build community
- Providing opportunities for food growing
- Ensuring accessible seating throughout



## 1. Fleet Square

Encourage wildlife and biodiversity, offer seasonal visual appeal, and provide opportunities for social interaction and play.



## 2. Wells Square Play Zone

Improve play opportunities, beautify the space with sensory planting, and integrate wildlife-friendly features to make the area more inviting for both children and adults.



## 3. Wells Square Grow Zone

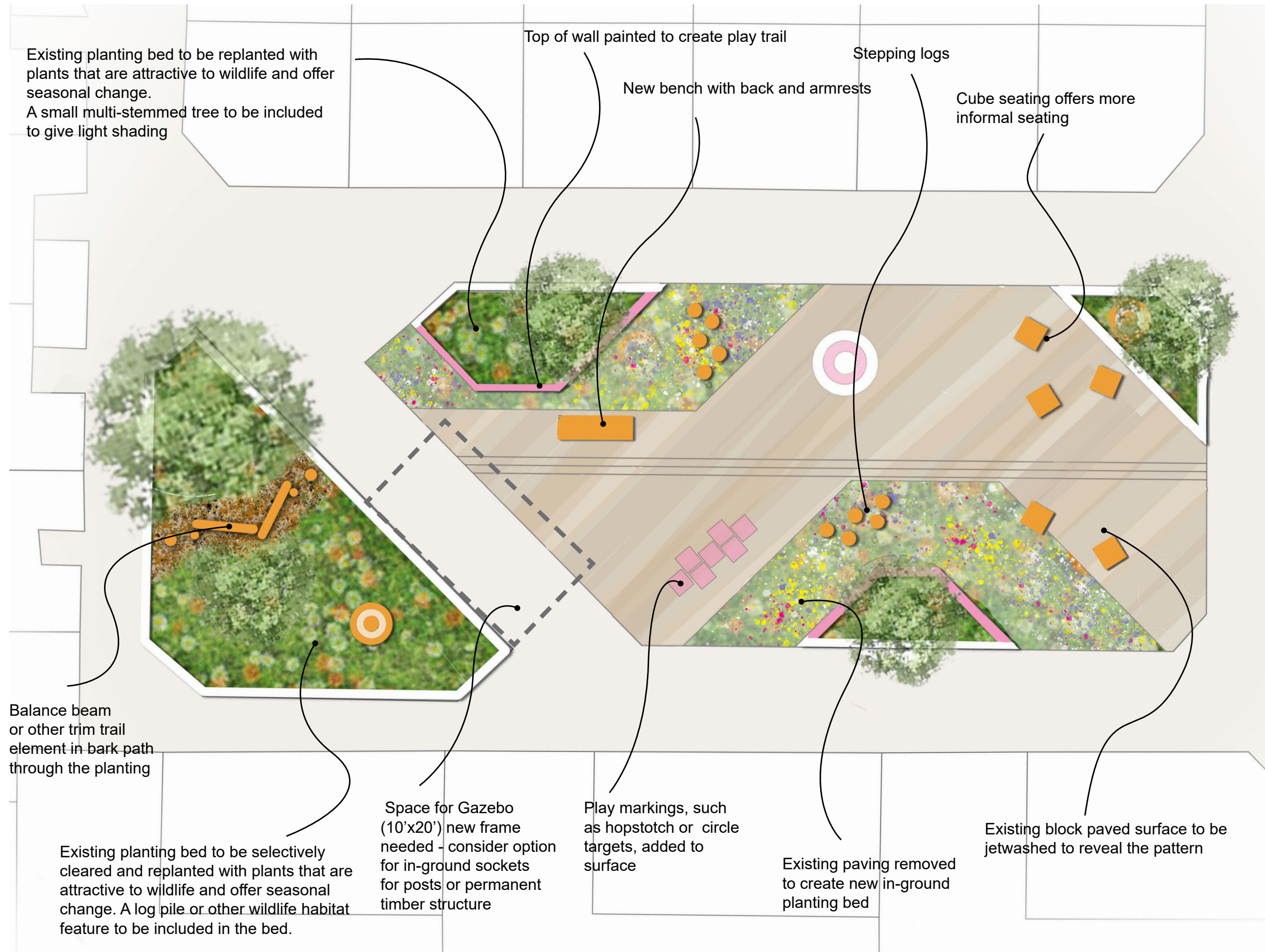
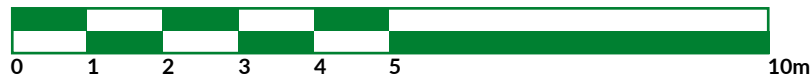
Support community-led food growing, enhance biodiversity, and promote engagement with the grow zone while offering shaded seating areas for relaxation.



## Seddon Street

Enhance the visual appeal of the street, provide greenery, and improve air quality while preventing heavy shading for residents.

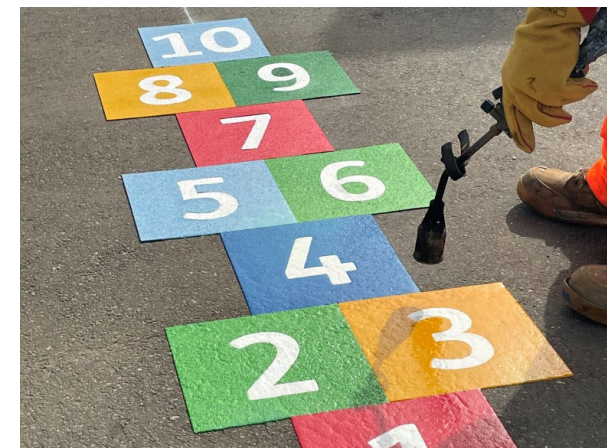




Colourful planting



Cube seating



Painted play marking

# New Calthorpe: Fleet Square

## Detailed Design

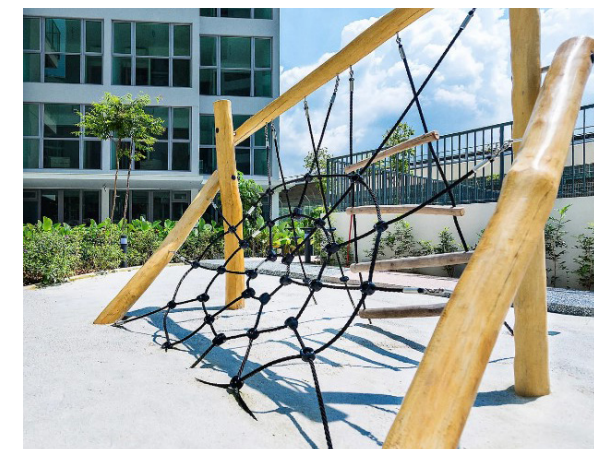
Status:  
**INFORMATION**  
Drawing Number:  
CA042-P-SK-002  
Drawn/Checked/Approved  
NK

Revision:  
A  
Date:  
27/08/24

Scale:  
1:100 @A3







Example of climbing net and ladder that could be installed



'Green' screen Ivy fencing



Wildlife habitat features

# New Calthorpe: Wells Square Play Zone

## Detailed Design

Status:  
**INFORMATION**

Drawing Number:  
CA042-P-SK-004

Drawn/Checked/Approved  
NK

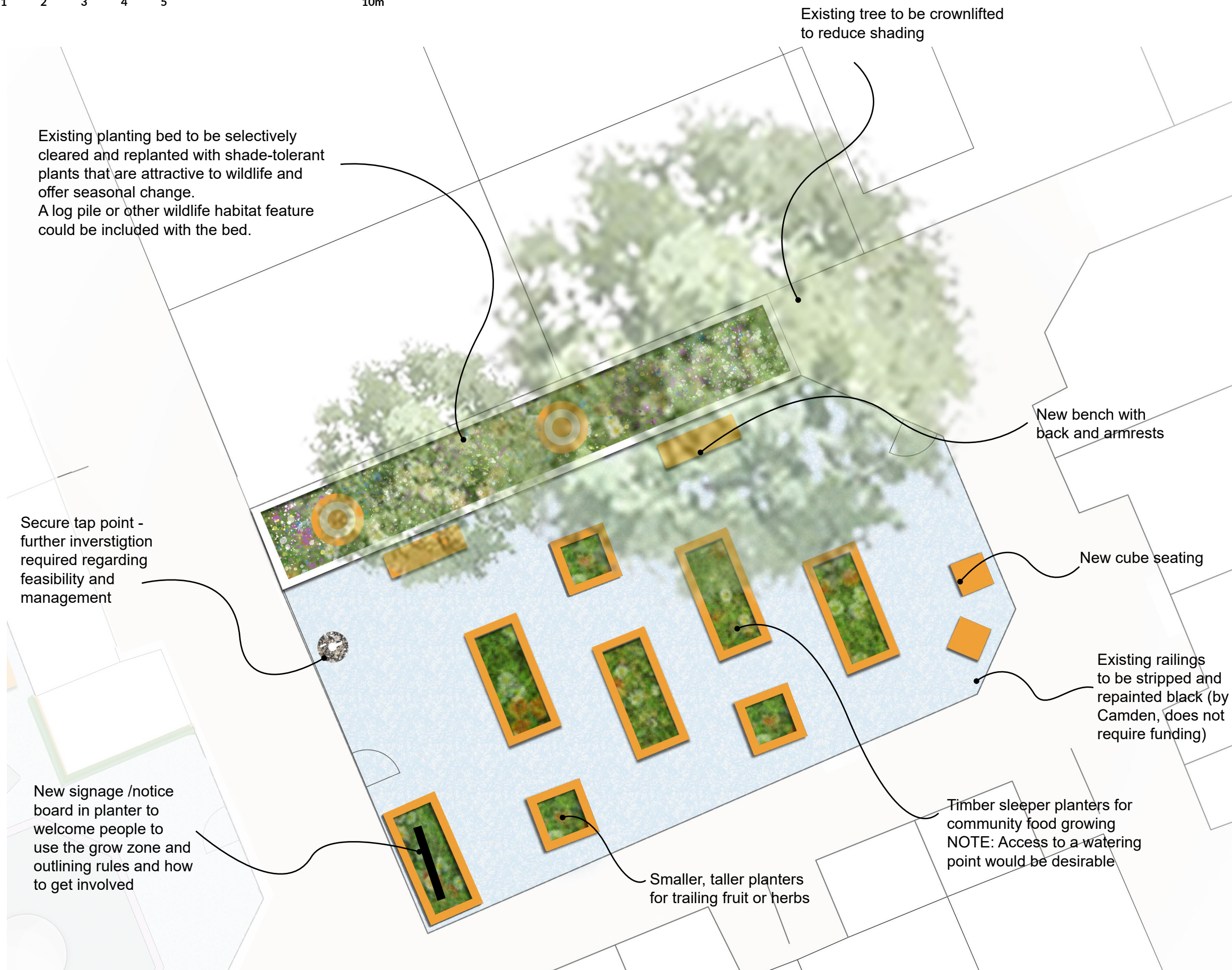
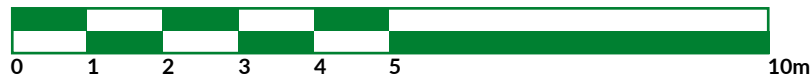
Revision:  
A

Date:  
27/08/24

Scale:  
1:100 @A3



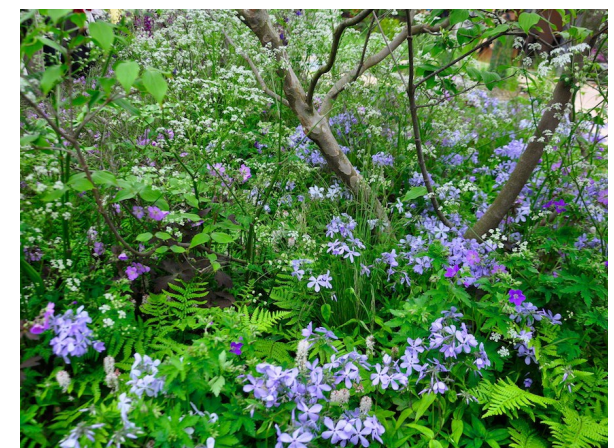




Features for wildlife



Raised timber planters



Shady planting

# New Calthorpe: Wells Square Grow Zone

## Detailed Design

Status:  
**INFORMATION**  
Drawing Number:  
CA042-P-SK-006  
Drawn/Checked/Approved  
NK

Revision:  
A  
Date:  
27/08/24

Scale:  
1:100 @A3







New planting beds with tree planting

# New Calthorpe: **Seddon Street**

## Detailed Design

Status: **INFORMATION**  
Drawing Number: CA042-P-SK-008  
Drawn/Checked/Approved: NK  
Revision: A  
Date: 27/08/24  
Scale: 1:100 @A3

