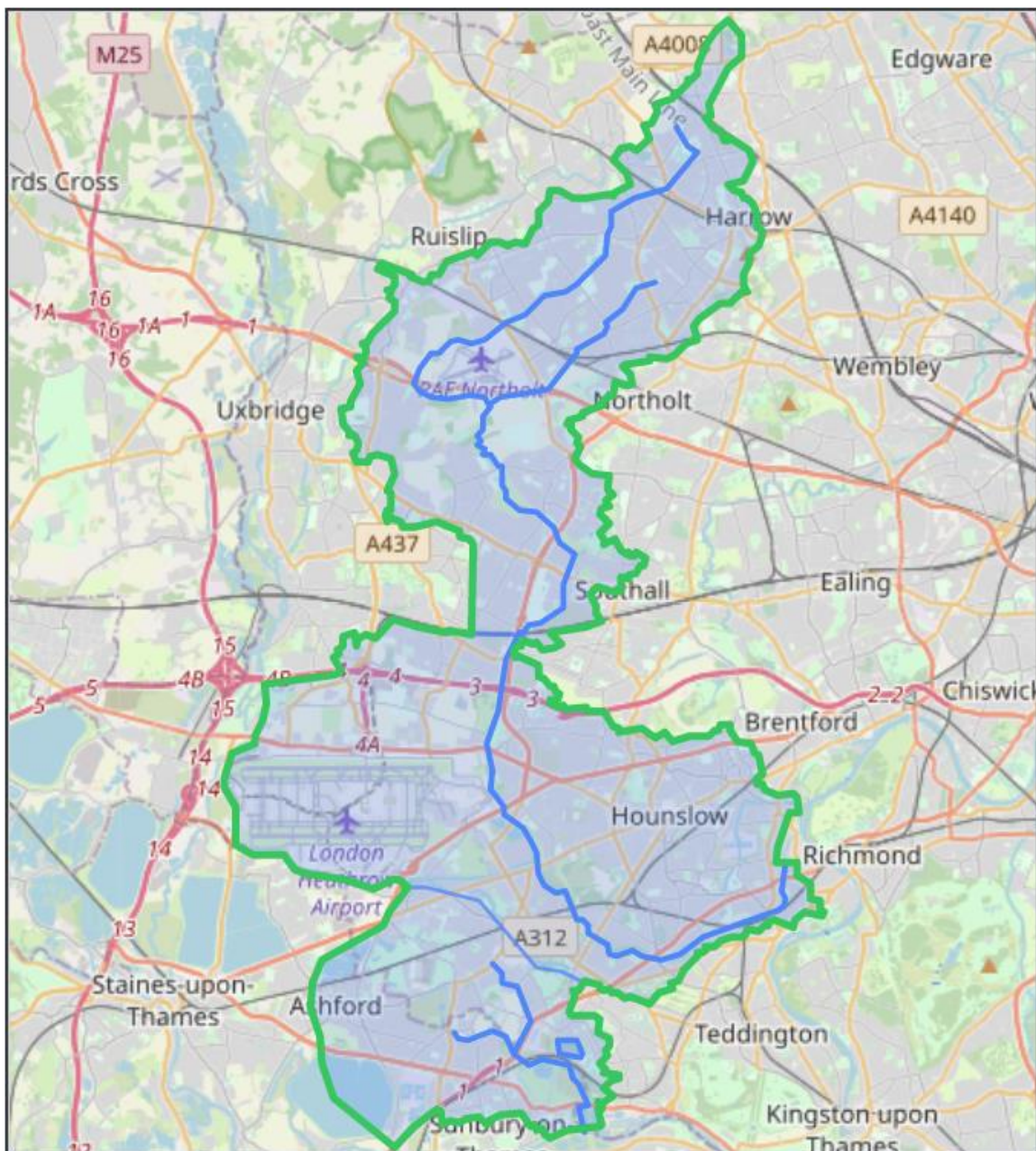


# Crane Valley Grant Programme 25/26

## Programme Guide

### What is the Crane Valley Grant Programme?

The Crane Valley Partnership and Thames Water have commissioned a grant programme that will bring wide environmental and community benefits within the catchment area of the River Crane in West London ([see zoomable map here](#)).



The Crane Valley Grant Programme is part of Thames Water's Smarter Water Catchments initiative. The programme recognises that grassroots, community, environment and conservation groups, often focusing on a particular area, are uniquely placed to carry out works and projects which will bring a wide range of benefits, including those contained within the [River Crane Smarter Water Catchment Plan](#) and its [Update](#).

The programme understands that a range of groups working together can make more impactful improvements than separately. It aims to ensure that benefits of the programme are enjoyed by all communities in the Crane Valley area and that alongside physical works, elements such as education, awareness raising, research and development, organisational costs and feasibility of projects are also supported. For more information on the River Crane Smarter Water Catchment initiative, please see the [Thames Water](#) and [Crane Valley Partnership](#) websites.

**Groundwork London** are partnering with **Thames Water** and the **Crane Valley Partnership** to deliver the programme for the benefit of the communities in the Crane Valley area. Groundwork have extensive experience in supporting, and delivering projects for the benefit of the environment and local communities. Please do not hesitate to contact us with any queries, and we will provide you with support.

There are two funds offered as part of the Crane Valley Grant Programme – **Community Fund** and **Project Fund**.

More details on these two funds, including their aims, what support is available and the eligibility requirements, are set out below. Please note that for both funds, all applications must relate to projects taking place within the Crane Valley Catchment Area, as shown on this [map](#).

If you would like guidance on what kind of projects are most needed in the catchment area, then please contact our programme partners, Let's Go Outside and Learn at [info@lgoal.org.uk](mailto:info@lgoal.org.uk), and Habitats & Heritage at [stephen@habitatsandheritage.org.uk](mailto:stephen@habitatsandheritage.org.uk)

## What kind of funding are you looking for?

The Crane Valley Grant Programme provides two different funding streams:

### **Community Fund:**

Small, community based grants of up to £3,000 for catchment-based initiatives, new or continued environmental and social work and associated costs.

### **Project Fund:**

Larger, project grants of between £3,000 and £100,000 for higher impact projects that deliver against six Crane Valley Grant Programme aims.

# Crane Valley Community Fund

The Crane Valley Community Fund is offering small grants up to £3,000 to deliver a range of environmental and associated community benefits throughout the Crane Valley catchment area. This can cover organisational costs such as field equipment, PPE, operational services and training, promotional materials, site infrastructure, events.

It is part of the Crane Valley Grant Programme, alongside the Crane Valley Project Fund, and will support activities within the River Crane Catchment Area (see map [here](#)).

The fund has been devised specifically in response to local community groups requesting a source of small scale funding to support their activities. It provides support to the existing work of groups as well as smaller projects.

No match funding element is required for this application. However, a Community Fund award may form a component of a larger funding package for a project with similar or complementary community-focused objectives. A (non-exhaustive) list of items groups may purchase with grant funds are listed in Appendix 1.

The following groups are eligible:

- Educational Establishments
- Religious Organisations
- Local Authorities
- Registered Charities
- Companies Limited by Guarantee
- Not for Profit Community Interest Companies (CIC)
- Social Enterprises
- Constituted Community Organisations
- Friends of Groups
- Tenants and Residents Associations
- Informal or non-constituted groups\*

\*If you are applying as an informal or non-constituted group, you will need to apply via a sponsor organisation.

We may also be able to fund other organisations where the key objectives are related to the public interest.

**You can submit an application from the 16th June 2025 until 15th September 2025.** There are two application assessment deadlines, on 21st July and 15th September 2025.

This year, there is approximately £50,000 available on the Community Fund. This is for the entire 25/26 period. We would encourage you to apply as early as possible as the amount of funding available will decrease as grants are awarded.

#### Please Note:

- All grant monies awarded through the Community Fund must be spent by 16<sup>th</sup> February 2026.
- If successful, we will hold short mid-project calls at the approximate mid-point of your project timeline to review your progress, and to see if we can support you further.
- Guidance on completing final monitoring form will be released to successful applicants shortly after receipt of the grant award.
- You will be required to provide evidence of expenditure with your final monitoring. Where this is not received, in part or in full, we may seek to reclaim any awarded monies. Please ensure that you keep invoices/receipts/payslips relating to project expenditure until after your project has finished, and final monitoring process have been completed.

#### Timeline:

Timeline	
Applications open for Community Fund	Monday, 16 <sup>th</sup> June 2025
First deadline for assessment	Monday, 21 <sup>st</sup> July 2025
Final deadline for assessment	Monday, 15 <sup>th</sup> September 2025
Deadline for project completion and reporting	Monday, 16 <sup>th</sup> February 2026

#### Eligibility Criteria

- Does your activity take place within the Crane Valley Catchment area? See map [here](#)
- Are you applying for up to £3,000?
- Does your idea reflect the aims of the Crane Valley Project Grant programme?
- Will the activity funded by this grant be completed by 16<sup>th</sup> February 2026?
- Does your organisation have a UK bank account with two unrelated signatories; or Do you have a sponsor organisation that has a UK bank account with two unrelated signatories, that is able to ringfence awarded grant funds on your behalf?

#### How to apply to the Community Fund:

- Review all programme documentation first. Everything can be found on our website [here](#). This is key to ensure you have full knowledge of the programme and are best placed to design your project in line with its objectives.
- To access the Community Fund application form, please follow the 'Apply for the Community Fund' link on the webpage to complete the eligibility checker. If you are eligible, you will be able to proceed to the application form.
- Please either register on our application portal if you have not applied for a grant with us before, or please use your existing log in details if you have.
- Complete the application on the portal. You will receive an automated confirmation email once you have successfully submitted your application.

# Crane Valley Project Fund

The Crane Valley Project Fund is offering grants of between £3,000 to £100,000. Funding is available to organisations that will deliver projects aligned with the aims of the [River Crane Smarter Water Catchment Plan](#) and [Update](#).

The Smarter Water Catchment Plan aims to implement a systems-based view of the environment, collectively addressing multiple challenges and co-delivering solutions to protect and enhance the environment of the River Crane Catchment area.

For the Project Fund, applicants will need to choose at least one (and no more than three) of the following Crane Valley programme aims for their project to meet.

- Disconnect or attenuate surface water from the sewerage system
- Support to achieve Good Ecological Status: address urban diffuse source pollution
- Support to achieve Good Ecological Status: address physical modifications to the river
- Support to achieve Good Ecological Status: address point source pollution, including misconnections
- Reduce water consumption
- Protect & enhance biodiversity

Please note, that projects are able to deliver activities to promote community engagement/education, raise awareness and support and develop partnership resilience and capacity, for any of the above aims chosen.

The activities and projects that could be supported through this fund are wide ranging. There are no limits on categories of cost (capital, resource etc.). We are looking for projects that fit into one of the following categories:

- Feasibility – an assessment of the practicality of carrying a project, looking at the strengths and weaknesses or different approaches.
- Implementation and Delivery – carrying out activities based on a project plan, to achieve specific outcomes.
- Education and Engagement – raising knowledge and awareness of environmental needs in the area, and encouraging behaviour change in the wider community.
- Research and Development – carrying out work which will allow for innovative or new approach to challenges in the Crane Valley.

This year, there will be one application round of the Project Fund, in June-July 2025.

For FY25/26, there is approximately £200,000 available for the Project Fund.

Eligibility of groups that can apply is the same as for the Community Fund, **but unconstitutional groups are not eligible, given the size of grants available**. If you have any queries regarding this, please do contact us before applying.

#### Please Note:

- All grant monies awarded through the Project Fund must be spent by 16<sup>th</sup> February 2026.
- Funding will not be available specifically for works to rectify property misconnections.
- If you are applying for a grant to continue works started in the previous round, you should have completed all works associated with this prior funding before submitting an application for this round. If this applies to you then please get in contact with us at [CraneValleyGrants@groundwork.org.uk](mailto:CraneValleyGrants@groundwork.org.uk). Please see FAQs for more on this.
- If successful, we will hold short mid-project calls at the approximate mid-point of your project timeline to review your progress, and to see if we can support you further.
- Guidance on completing final monitoring form will be released to successful applicants shortly after receipt of the grant award.
- You will be required to provide evidence of expenditure with your final monitoring form. Where this is not received, in part or in full, we may seek to reclaim any awarded monies. Please ensure that you keep invoices/receipts/payslips relating to project expenditure until after your project and final monitoring process have been completed.
- Final payments will be made approximately two weeks after the receipt of all required monitoring information. This means that if a project is scheduled to finish on 16<sup>th</sup> February 2026, and all required monitoring and evaluation information is submitted and approved by this date, you will receive the final instalment payment approximately two weeks after.

#### Timeline:

Timeline	
Applications open for Project Fund	Monday, 23 <sup>rd</sup> June 2025
Application deadline for assessment	Monday, 4 <sup>th</sup> August 2025
Deadline for Reporting	Monday, February 16 <sup>th</sup> 2026

#### Eligibility Criteria

- Does your activity take place or your organisation operate within the Crane Valley Catchment area? See map [here](#)
- Are you applying for between £3,000 and £100,000 for a Project Fund Grant?
- Are you applying on behalf of an organisation with a bank account into which a grant can be paid?
- Will the activity funded by this grant be completed by February 16<sup>th</sup> 2026?
- Does your idea reflect the aims of the Crane Valley Project Grant programme? Please use the Grants Programme Guide to understand the aims of the programme.

#### How to apply to the Project Fund:

- Read all the guidance and documentation available on the Groundwork London website [here](#). This is key to ensure you have full knowledge of the programme and are best placed to design your project in line with its objectives.
- To access the Project Fund application form, please follow the 'Apply for the Project Fund' link on the webpage to complete the eligibility checker. If you are eligible, you will be able to proceed to the application form.
- Please either register on our application portal if you have not applied for a grant with us before, or please use your existing log in details if you have.
- Complete the application on the portal. You will receive an automated confirmation email once you have successfully submitted your application.



## For Both Funds:

### Application Tips

1. Ensure you have a clear idea and outline of your project prior to completing the form.
2. Assume that we do not know anything about your organisation or project
3. Do not use jargon, and try to ensure you refer back to our guidance and documentation where relevant.
4. Carefully read all the questions and ensure that the answers you are giving are answering the questions asked. If you are applying to a number of programmes for the same project, please ensure you spend time ensuring you answers are relevant to the application in hand.
5. Use positive statements, when describing your proposal.
6. Ensure your message is easily understandable and suitable for the audience (ie the Funder).
7. Ensure your budget is as detailed and accurate as possible.
8. Proof read your application before submitting. If possible, ask someone else to proof read it.

### What if I need further advice on my proposal/application?

Groundwork London and Crane Valley Partnership will be running information sessions for both funds, setting out the key aims, tips on applying and use of the portal. In addition, we will run at least one application workshop focused on the Project Fund, which will be a more in depth look at project development, completing proposals, groups exercises, alongside use of the portal. You can find more information on these on our website [here](#).

The grants team at Groundwork London are available to assist with both the logistics of application and development of your project. Please call on 0207 239 1390 or email us on [CraneValleyGrants@groundwork.org.uk](mailto:CraneValleyGrants@groundwork.org.uk). We will be happy to arrange a call to see how we can assist you.

In addition, the Crane Valley Partnership are on hand to help ensure your project is as successful as possible and relevant to the area. If you are applying as an un-constituted group, and need a partner organisation, Habitats and Heritage may be able to support. Please contact [stephen@habitatsandheritage.org.uk](mailto:stephen@habitatsandheritage.org.uk)

## FAQs

### Can two or more organisations apply together?

Yes, we welcome partnership bids, though one organisation must act as the lead organisation and will be responsible for money, communications, and completing monitoring. When making your application you may wish to see whether there are nearby organisations that you can partner with and share costs on, such as tools, storage etc.

### I feel I have good project idea but I am not sure whether I am eligible. What should I do?

If you have any doubts about the eligibility, requirements of the fund then please get in contact with Groundwork at [CraneValleyGrants@groundwork.org.uk](mailto:CraneValleyGrants@groundwork.org.uk).

### Can I apply for two projects?

Yes, you can submit multiple applications in the same funding year.

### Does the project space need to be accessible to the public?

The site does not necessarily need to be open access to the public; however, there should not be barriers to the wide community enjoying the benefits of the project.

### Can councils apply?

Not for the Community Fund but yes for the Project Fund. The council will need to be a partner or at least fully engaged with any project that is on council land. We will also want to see engagement with the community on the proposal and through the project.

### Can schools apply?

Yes, and where relevant, we would like projects to be driven by consultation with schoolchildren, parents and the wider community. We will prioritise projects where the wider community is involved and will benefit.

### Are contractors allowed?

Yes, though we do want to see value for money and where possible engagement and volunteering from the community. Please ensure you can show value for money in relation to any contractor costs.

### Do I need match funding?

No, you do not need match funding. However, the partnership would strongly encourage applicants to secure match funding or in-kind support for their project, particularly with Project Fund applications. Applicants solely applying under the Project Fund aim 'Protect & enhance biodiversity' will need to state secured match funding in their application to be eligible to be awarded funds.

### Will extensions be allowed in any circumstance?

We will only be able to offer extensions where there have been events which are not foreseeable or beyond the applicants control. Please ensure you bear in mind the project delivery period when designing your project and ensure your activities are suitable.

# Appendix one

## What can be funded through the Community Fund?

The following are *examples* of things that community grants can be spent on. It is not an exhaustive listing:

### Category 1: Field equipment

- litter pickers
- litter bag hoops
- secateurs, shears and loppers
- hedge trimmers
- chain saws [subject to proof of operator(s) proficiency]
- strimmers
- scythes
- electrical generators
- forks, spades, hoes
- ladders
- hoses
- walkie-talkies
- sampling nets, buckets, trays and bottles
- gazebos
- outdoor event tables and seats
- barbecue/outdoor catering equipment
- water bottles and thermos flasks
- first aid kits
- torches
- bat detectors and other wildlife monitoring equipment
- still and video cameras
- OS maps
- Branded clothing [T shirts]

### Category 2: Personal Protective Equipment (PPE)

- protective gloves
- hard hats
- ear defenders/guards
- safety goggles
- overalls
- safety boots
- life jackets
- waders
- Fluorescent tabards/jackets

### Category 3: Operational services and training

- public liability and other relevant insurance fees
- license application fees
- website and email hosting fees
- bookkeeping/accountancy support
- printing costs
- first aid training
- Health and Safety training
- operators certificate training
- translation services
- specialist site surveys
- specialist risk assessments
- specialist environmental contractor services (e.g Operation Centaur, INNS control)
- portaloos hire

### Category 4: Promotional materials

- website design
- pop-up banners and mobile display boards
- posters and leaflets
- recreational route maps
- logo design

### Category 5: Site infrastructure [subject to agreement with landowner]

- benches
- picnic tables
- interpretation panels
- wayfaring signs
- trail indicator posts
- notice boards
- litter bins
- nest boxes and bug hotels
- wildlife hides
- construction materials (e.g. for path or river enhancement works)
- fencing and gates
- nursery plants
- trees
- compost and mulch
- trellis and/or planters
- rainwater harvesting systems
- paint

### Category 6: Events

- venue hire (e.g. for an AGM or conference)
- marquee hire

- event insurance
- catering
- furniture hire
- security services
- van hire
- lighting
- public address system hire