

# PROJECT SHOWCASE

## Spring 2025

GROUNDWORK  
CHANGING PLACES  
CHANGING LIVES



LANDSCAPE  
ARCHITECTS

# FOREWORD

Changing Places is a key component of what Groundwork aspires to do...the various projects we've chosen to highlight give a flavour of what our fantastic Landscape Design Team does. Not only do we design and deliver change, we do so in a way that engages the people who live and work in the areas of benefit. Where we can we layer project benefits - for example a Miyawaki Forest is so much more than the trees that are planted, each one is created by a community for a community and brings short, medium and long terms benefits to people and the environment they live in. None of this would be possible without the enthusiasm for change that our funding partners have. The projects highlighted here are a small sample of the dozens of projects we deliver annually - you can find out more by visiting our website or giving us a call.

Adrian Curtis  
Executive Director

## WE HAVE A MISSION TO MOBILISE PRACTICAL COMMUNITY ACTION ON POVERTY AND THE ENVIRONMENT. WE'RE PASSIONATE ABOUT:

- IMPROVING PEOPLE'S PROSPECTS:  
INCREASING CONFIDENCE, HEALTH AND WELLBEING, SKILLS AND EMPLOYABILITY OF THOSE MOST IN NEED, LIFTING THEM OUT OF POVERTY.
- CREATING BETTER PLACES:  
HELPING PEOPLE WORK TOGETHER TO MAKE THEIR SURROUNDINGS GREENER, SAFER AND HEALTHIER;  
GETTING INVOLVED IN LOCAL DECISION MAKING.
- PROMOTING GREENER CHOICES: HELPING PEOPLE, COMMUNITIES AND BUSINESSES UNDERSTAND AND REDUCE THEIR ENVIRONMENTAL IMPACT TO FIGHT CLIMATE CHANGE.



# THE YEAR IN NUMBERS:



# 194

Projects delivered bringing benefits to the people of Yorkshire



# £695,360

Grants distributed to over 100 community organisations



# 922

Days of volunteering by 357 people, valued at £98,058



# 632 Ha

Landscape restored = 1,561 football pitches



# 202

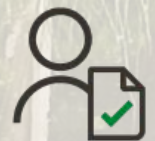
Actions to improve biodiversity or nature-based solutions

Groundwork Yorkshire's qualified Landscape Architects are passionate about creating better spaces and have a unique set skills to bring together community engagement and quality design. Staffed by chartered Landscape Architects, the team is dedicated to delivering imaginative and innovative design solutions to meet clients needs.



78

projects delivered



9

community consultations



4,320

trees planted



2,266,792 m<sup>2</sup>

of land improved

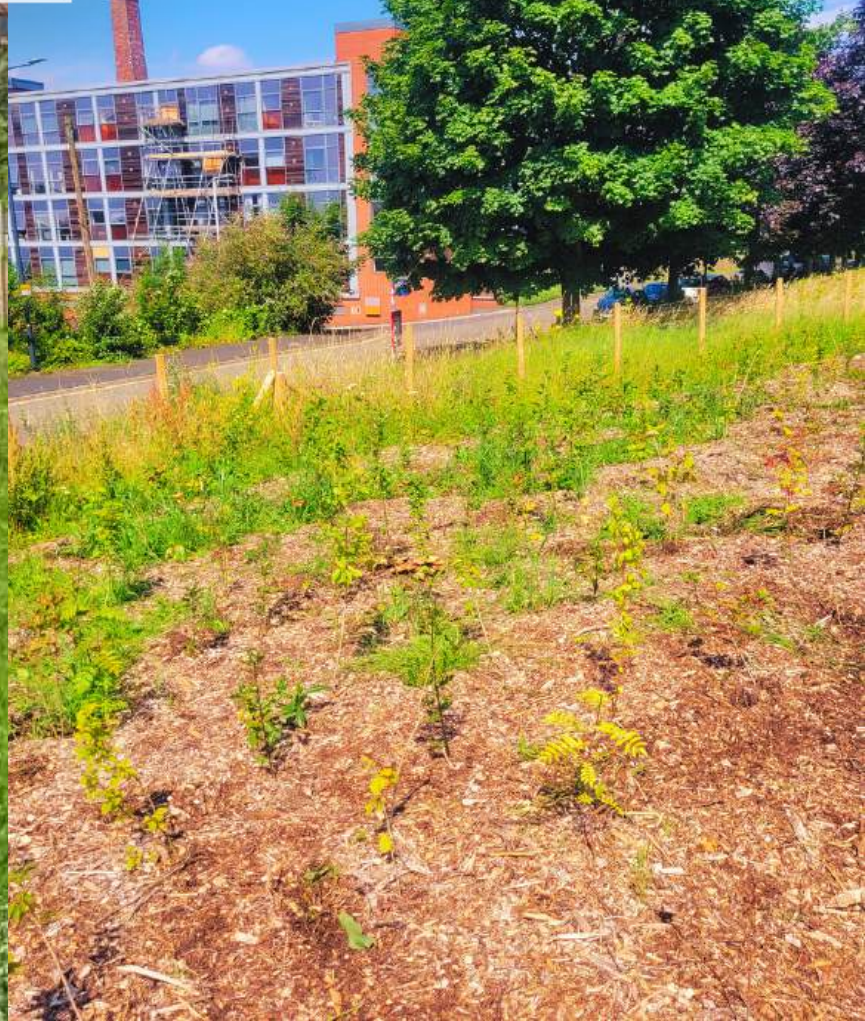


We planted 1,200 trees at Bow Street in Leeds over two days with help from Mount St Mary's Catholic High School, Richmond Hill Academy, Caval volunteers, a White Rose Forest member and Saxton Apartments Residents volunteers.

The Miyawaki-style micro wood was named after Japanese botanist Akira Miyawaki. Trees are planted tightly together to encourage competition and creates a really fast growing woodland. Our micro wood, which is Leeds' first, will also provide a air quality pollution barrier and will help block the sound of the busy road beyond.

Once completed, students from the local schools will help to monitor and maintain it, before it becomes self managing.

We had media coverage from BBC Radio Leeds. [Read the article online.](#)



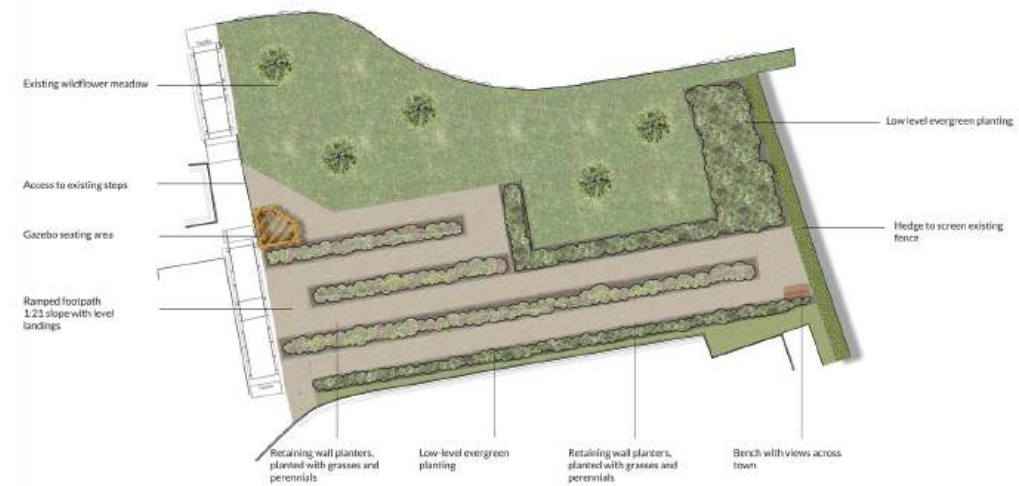
**PLACES**

**LEEDS' FIRST 'MIYAWAKI' FOREST**

# GLEDHOW LAKE AND BECK



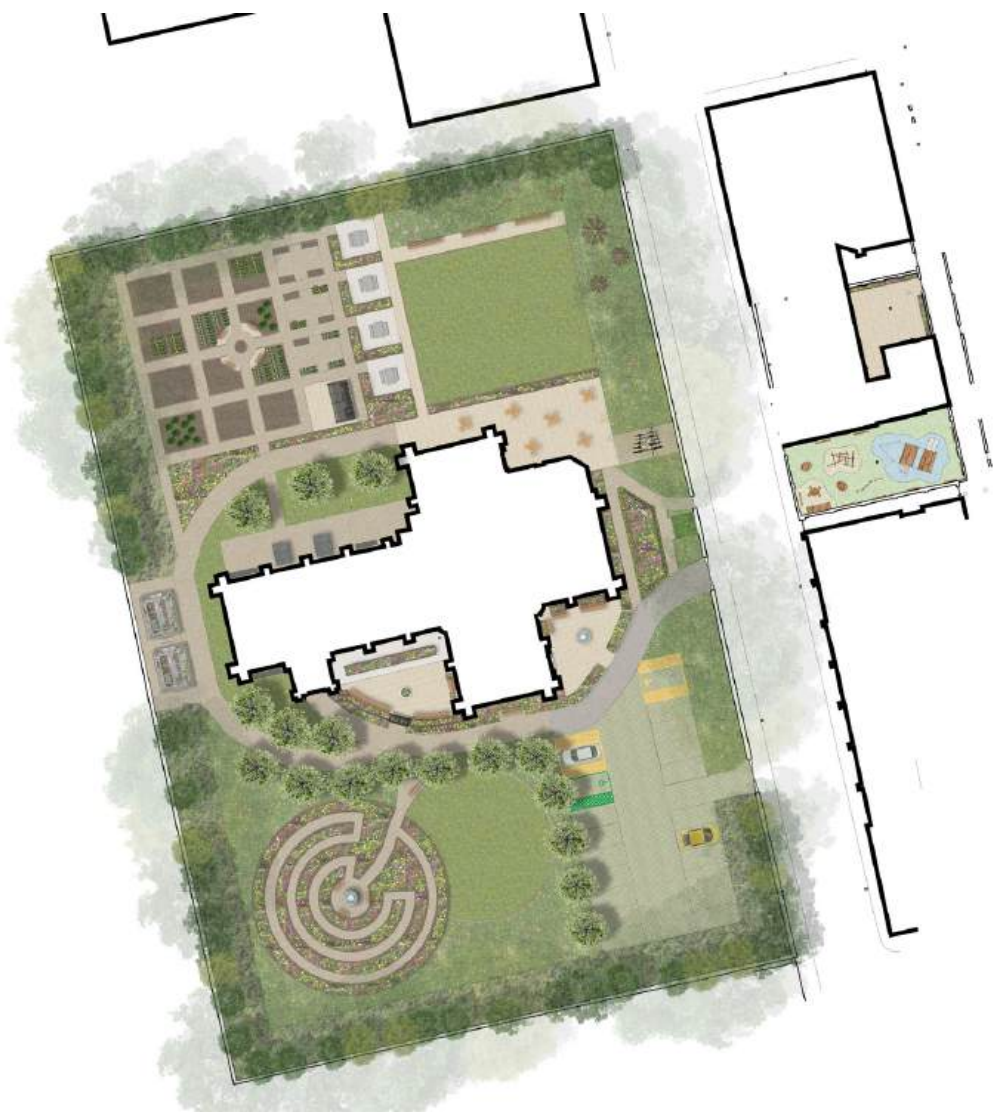
Groundwork are working with the Friends of Gledhow Valley Woods and Leeds City Council to continue desilting the lake by connecting the island to the bank of the lake. Desilting will reduce stagnation of the water and increase the biodiversity of plants and wildlife. The improvements to Gledhow Beck will increase the habitats with excavation and planting of wetlands, installation of leaky dams to slow the flow of the beck and installing rolls of tree branches or fascines on the woodland slopes to reduce the rain water run-off that washed silt into the beck and reduces the range of habits. Gledhow Lake and Beck will be restored to a healthy environment with a restored viewing platform.



# WHITBY HOSPITAL

The Landscape Architect team have been working on a design for a community garden space at Whitby Community Hospital. It was recently completed. The site was previously home to the old hospital building and was demolished leaving a steep embankment adjacent to the new hospital building. The space has been transformed to provide accessible ramps, terrace and seating area, which will be used by hospital patients and staff, and also by members of the local community. A community food growing space has been incorporated into the design.





## ST JOHNS CHURCH, GOOLE

We are currently involved in the design of the 'Life and Hope Garden' at St John's Church, Goole, which has involved a number of public consultation sessions. These consultation sessions have provided good opportunities to speak with people who are connected with existing church groups and with the wider community in Goole, to ascertain how they would like to use the space, which is currently lawn. From these discussions; an outline design was drawn up, to include the following key zones: working kitchen garden, gathering space, garden of prayer and reflection and a place of recreation and play. We are now moving on to the detail design stage and planning permission.



# KING GEORGE GARDENS

Groundwork Landscape Architects and Pride teams have been working with community groups in Seacroft and Leeds City Council to bring neglected and unused space back to life. Designs for King George Gardens began in February 2023 with the sharing of ideas from community group representatives and the drawing up of a draft design to create a garden that could be used for community events, whilst being a tranquil place where locals will be able to take time out and connect with nature.

The design and build included a lawn for play and events, attractive new boundary fencing, a new accessible ramped entrance, planting of grasses, evergreens and perennials to improve biodiversity, new accessible footpaths, benches and a food growing area with access steps. Successional bulb planting will take place in autumn and an artist is currently being selected to paint a mural with the existing pavilion. This unused space has been given a new lease of life.





## WAKEFIELD SCHEMES

The Landscape team won a commission to design two small public realm schemes for Wakefield Council in South Elmsall and South Kirkby to breathe life back into local high footfall areas. The designs aim to bring colour, increase biodiversity and create accessible seating areas.

This is an exciting opportunity to re-establish our working relationship in Wakefield. Watch this space!

## PONTEFRACT- TREE PLANTING

On a cold and frosty January morning the children at Cherry Tree Academy in Pontefract helped to create a new wooded area in their school grounds to encourage wildlife and create a habitat where flora and fauna could flourish. The children planted over 80 trees and talked about the differences in the type of trees and what their leaves and seeds would look like in summer and autumn. The children learned very quickly about how to plant a tree and the importance of making sure the roots were not damaged when we put them in the ground. Each child planted at least three trees, and many named their tree and even sang and talked to them to encourage them to grow. Wakefield and District Housing came along and helped us with the planting and also gave us a cherry tree.



# LEWISHAM PARK

The third park to be delivered as part of the Morley Towns Fund programme, Lewisham Park, is due for completion at the end of April. All the fitness equipment is now in, the new entrance area is completed, the footpaths have been formalised including a new one to the side of the building, seating bays and new benches have been installed and we have planted lots of new trees.

The 'Make Space for Girls' area is partially completed with the large coco swing installed. We're planning to install a low retaining wall and street furniture and the new cricket wicket and improved MUGA will start after Easter.



# LANDSCAPE ARTICLES

## LNER

We've been successful with the LNER application for a community programme to complement the Design team's work on the Morley Greenway. The programme will include a series of led walks and cycles along the greenway, bike maintenance courses, a bespoke programme of work with the college encouraging students to use the greenway, public events at the White Rose Centre, creating signage for the route with local schools, The Morley Shed will create some habitat boxes and a prize giveaway. Thanks to everyone who voted and shared Lou's video!

The Landscape Architect team have been working on some new articles to position us at the experts in our field. Taybah and Sarah worked on a piece all about [Play Sufficiency](#) and Jeremy wrote about [Ecological River Restoration](#). The articles are published on LinkedIn and our website, so please help to share them around and have a read!



Before I joined Groundwork, I lived in Hong Kong for over 20 years. Hong Kong is a busy, tiny city. You will never feel alone at night as many people work overnight but can sometimes feel breathless with the high speed life.

The UK is one of my dream countries to live in as I am a big fan of Harry Potter and Sherlock Holmes. I always dreamt that one day I would day i would be there with a cup of tea, sitting on the sofa, watching out from the balcony and meditating on something.

And that's why I am here!

My new role with the Groundwork Yorkshire team will allow me to expand on my existing skills, and gain some new ones, creating new and exciting content across the great and inclusive organisation. I am looking forward to meeting and working with everyone!"

## NEW STARTERS

### STELLA - LANDSCAPE ARCHITECT

"Hi, I'm Stella and I am glad to be a part of the Groundwork team.

I am a graduate in Landscape Architecture from Birmingham City University and have worked in the Landscape industry for a few years, working with famous architects, developers and government in both Hong Kong and China. I have participated in different types of projects such as roof top gardens, large scale residential landscape and parks. As a Landscape Designer, I enjoy creating green spaces for people to enjoy and putting my knowledge into practice.



# THANK YOU!

Working in partnership with public, private and community stakeholders, we improve, protect and enhance our local communities, partners and environment. A wholehearted THANK YOU is extended to all the organisations and people we have worked with in 2023/24.

**PROJECT SHOWCASE: Spring 2025**  
**LANDSCAPE ARCHITECTS //**  
**GROUNDWORK YORKSHIRE**

Visit: [www.groundwork.org.uk / yorkshire](http://www.groundwork.org.uk/yorkshire)  
Email: [leeds@groundwork.org.uk](mailto:leeds@groundwork.org.uk)  
Telephone: 0300 3033292



Groundwork Yorkshire is a company limited by guarantee and registered in England.  
Company Registration Number: 2202681 Charity Registration No: 519846

Published May 2025