



 the
weaver gowry
catchment

Management Plan 2025

Contents

Introduction

Weaver Govy Overview

Our Visions for Weaver Gowy Catchment

Our Principles

Data and Evidence

Project Action Plan

Monitoring and Evaluation

Work in Progress

Partnerships

Annexes



Hosted by Groundwork CLM

Member Stakeholders working in a spirit of partnership to develop and deliver integrated multi benefit solutions which improve the health and resilience of our Catchment.

Introduction

The Government introduced the Catchment Based Approach (CaBA) as a way of managing the health of our waterways in a local collaborative way by bringing together a consortia of the right member partners who have the remit, expertise and knowledge to meet the objectives with will be outlined later in this document.

Our water environment is crucial to our quality of life. We need to protect and enhance rivers and groundwater as systems which means thinking about them source to estuary, and all the places in between. In other words, we need to plan and work in collaborative partnership at a catchments scale.

There are lots of great things about our catchment which we want to keep and that takes management, conservation and planning for extreme weather events including flooding and drought. And there are some things we want to make better. That takes change. That's what a Catchment Based Approach (CaBA) Plan is all about.



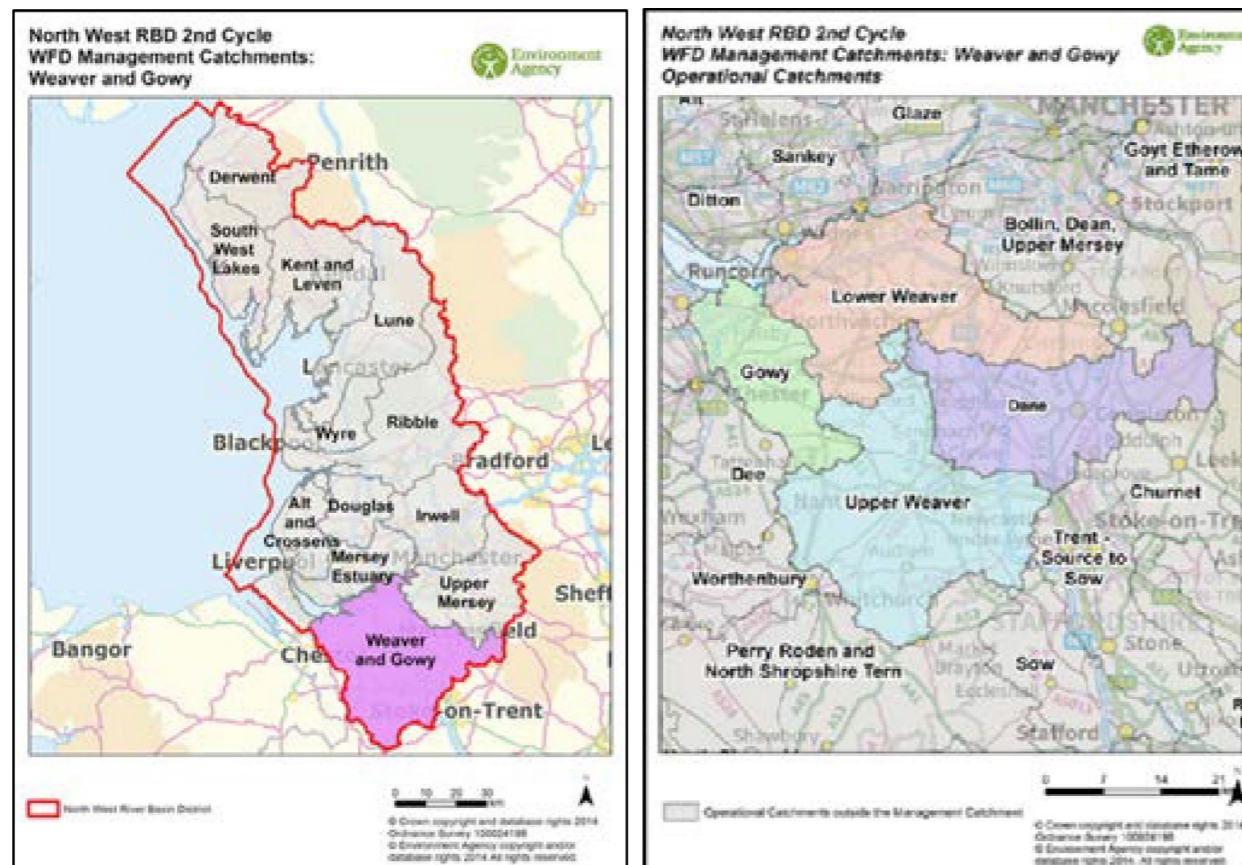
Weaver Gowy Overview

The Weaver Gowy catchment is part of the North West River Basin District and is characterised by low-lying rolling countryside and beautiful plains. However, some parts are heavily industrialised.

The River Weaver flows through dairy farmed areas of Cheshire, through Nantwich and onto Winsford where it becomes impounded and navigable, joining the Manchester Ship Canal at Runcorn. The operational catchments are the Dane, Gowy, Lower and Upper Weaver.



River Weaver at Barons Quay, Northwich.



Weaver Gowy Overview

The Gowy runs to the east of Chester and meets the Mersey Estuary near the oil refinery at Stanlow. This catchment is largely rural (dairy & beef farming) and includes core industrial locations with regulated and non-regulated water pollution issues in areas of industrial legacy. The area has numerous Sites of Biological Importance and Sites of Special Scientific Interest (SSSI). The Cheshire Meres and Mosses form part of the internationally important West Midlands Meres and Mosses, which include sites designated as SSSI, SAC and Ramsar. Otters have become established and the Lesser Silver Water Beetle, a protected species, is found in several parts of this catchment. The native White Clawed Crayfish is found in several watercourses in the catchment.

The catchment is popular with anglers as the Rivers Gowy and Weaver both support good coarse fish populations; this catchment also supports our largest eel populations. Rural land use and agriculture is a major feature of the Weaver Gowy catchment and agricultural and septic tank pollution are common problems.

Industry is concentrated around the lower catchment near Runcorn an area particularly known for its chemical industry and Ellesmere Port. The catchment is also known for its salt mines which supply salt for industrial use and for road gritting. In parts, the aquatic ecology suffers from current and past industrial discharges compounded by river modifications including weirs and locks that act as barriers to fish migration. The top three issues which need addressing under the Water Framework Directive in this catchment are pollution from rural areas, waste water and physical modifications.

1.0 Our Vision and Objectives for the Weaver Gowy Catchment evidence approach.

‘All water bodies of the Weaver Gowy catchment to be clean and healthy, supporting measurably diverse wildlife, valued by people and enabling sustainable economic growth.’

We’ve made great progress towards improving our water environment over the last few decades, but more needs to be achieved, especially if we are to deal with the pressures of a changing climate and growing population. Under the Water Framework Directive, the UK has to ensure that there is no deterioration in the quality of our waterbodies, and that all water bodies improve to reach good ecological status as soon as possible. Although this is challenging to achieve, it makes us look at a range of issues in water bodies and how they interact, and this can only be good for the long term health of our rivers.

Each River Catchment across England has its own vision, which outlines the main issues for the water environment and the actions that have been developed to tackle them. Key to achieving these ambitious plans is working in partnership across different organisations. By working together as the Weaver Gowy Catchment Partnership, hosted by Groundwork Cheshire Lancashire and Merseyside (GW CLM) we can improve river habitat, tackle pollution and work with communities, businesses and farmers to ensure that we’re all taking our fair share of responsibility. Step by step we’re making a real difference and this document outlines some of our current activities across the catchment and future plans for improving our water environment.



This plan is about action. Action to improve our rivers, and action to raise awareness and educate people about the importance of rivers in line with the following 5 core Objectives:



Developing a Robust Evidence Base:

We will collectively decide where and what the issues are based on the evidence available. This will enable us to identify, prioritise and address the needs of the Catchment. We will all commit to making available to this Catchment Partnership data, maps and evidence which help us to identify and deliver on the following objectives.



Improving Water Quality:

In line with the priorities of the Water Framework Directive to prevent the deterioration of waterbodies, move them towards good ecological status and reduce point source and urban/rural diffuse pollution. Take action towards meeting regulatory drivers, including the revised Bathing Water Directive.



Managing Water Quantity:

Protect the people and wildlife that depend on the river from the influences of climate change, both floods and droughts. As a Catchment Partnership we will integrate water quality, flood risk management and habitat creation when considering interventions.



Engaging with Business and Communities:

Manage the river from source to sea to maximise the benefits that it brings to our economy and communities. In connecting people with their natural environment, we have a priority focus on education, improving health and wellbeing, supporting communities at risk from flooding and engaging local business to use and manage water in line with Environment Agency legislation.



Enhancing and promoting the Natural Aspects of the Catchment:

Protecting species, improving habitats and measurably diverse biodiversity, controlling the spread of Invasive Non Native Species (INNS) in ways that are able to be managed and sustained into the future in line with Local Nature Recovery Strategies

Vision and Objectives



Our Principles

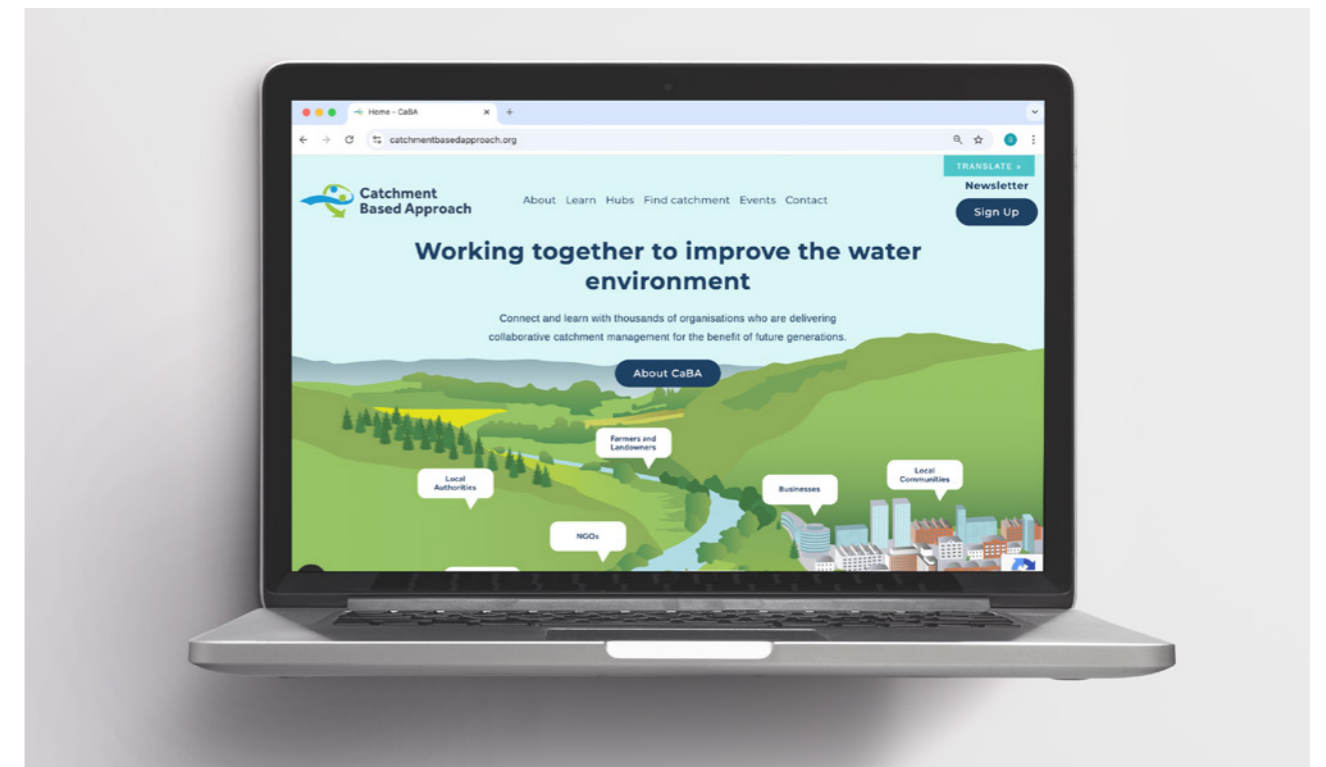
- An agreed commitment from stakeholders to collectively consider the above objectives in conjunction with the Defra 25 Year Plan and Water Framework Directive when planning and carrying out physical work, activities and community engagement within the Weaver Gowy Catchment area.
- Identification of funding opportunities and a commitment for member stakeholders to develop consortia ratified bids which address their own business objectives and also support a sustainable win-win legacy for the Catchment Based Approach.
- A commitment that all member stakeholders provide relevant data, project updates and outputs on projects which deliver on the partnership objectives. Where Environment Agency finance has been used, there is a requirement for members to provide KM enhanced figures.
- A commitment that all member stakeholders will ensure that non-commercial mapping data and local evidence are made available for the partnership to build a fit for purpose StoryMap that will be publicly available and used as tool to prioritise action.
- Partnership working with other River Catchment Hosts across the North West of England to share best practice and build resilient delivery models which cross boundaries.
- Timely sharing of knowledge, best practice and information between Weaver Gowy Catchment members to ensure that the partnership is well coordinated.
- Promotion of @WGowRivers as an online 'hub' for public engagement with news about the River Weaver, Gowy, Dane and associated waterways.
- Identification of organisations, business, communities that are not yet engaged in or aware of the Weaver Gowy Catchment Based Approach with the key aim of encouraging local people and policy shapers to learn, understand and engage in shaping the future of our river corridors.
- Create a safe space where members can forge collaborative work that is informed by good local evidence and brings lasting sustainable benefits to the water environment.
- Maximise partnership opportunities to build match finance where feasible.

2.0 Data & Evidence to underpin a weight of evidence approach.

The key sources of evidence we will use to identify where we will work and what we will do are:

2.1 Nationally consistent evidence base

Catchment Based Approach (CaBA) data package: The 'CaBA Data & GIS User Guide' explains which layers are available, what they mean and how they can be used. They identify the spatial pattern of opportunities; issues, characteristics and the possible sources of the issues. This weight of evidence is constantly being improved by collecting datasets and working with local organisations in the catchment. This data coupled with local/national evidence, plans and strategies provide the weight of evidence required to deliver projects which will benefit the lives of people and wildlife living in this catchment.



2.2 Local Evidence

In addition to the national datasets available in the CaBA data package and via government open data initiatives, local data and evidence (including modelling) is important for helping to pinpoint issues, identify solutions and monitor outcomes in our catchment. For this reason the Partnership has developed a Weaver Gowy StoryMap an online tool which showcases, maps challenges, issues and opportunities on this catchment.



A number of key organisations are prioritising where they undertake actions to meet their particular aims and objectives. These actions can potentially impact on other aspects of the water environment. We will use the following resources to help the partnership focus delivery where it will bring the greatest benefit:

Defra 25 Year Plan:

Environmental Improvement Plan 2023 - GOV.UK (www.gov.uk)

This environment plan sets out UK goals for improving the environment, within a generation, It details how the government will work with communities and businesses to do this over the next 25 years.

Catchment Data Explorer:

<http://environment.data.gov.uk/catchment-planning/>
Weaver Gowy Management Catchment | Catchment Data Explorer

The Environment Agency website enables people to explore and download information about the water environment. It supports and builds upon the data in the river basin management plans. It includes summary information about catchments and links to other useful sites. This is central to the CaBA planning process and we will use this site to help identify where the issues are and the likely causes.

Swimfo Bathing Water Explorer:

Bathing water quality (data.gov.uk)

Swimfo allows you to look up details of a designated bathing water by name or location. Water quality at designated bathing water sites in England is assessed by the Environment Agency. From May to September, weekly assessments measure current water quality, and at a number of sites daily pollution risk forecasts are issued. Annual ratings classify each site as excellent, good, sufficient or poor based on measurements taken over a period of up to four years. Information about bathing water quality in other countries in the UK can be found here:

Catchment Flood Management Plan:

Weaver Gowy: Catchment flood management plan - GOV.UK (www.gov.uk)

We will use this to check planned actions for reducing flood risk in this catchment in order to identify opportunities to create multi-benefit actions, and to identify opportunities to add flood risk benefits to other planned projects.

The Flood Hub:

The Flood Hub

We will use this resource as an information source to stay up to date with coastal and flood information in the North West of England.

Catchment Based Approach Data Hub:

Catchment Based Approach Data Hub

The CaBA Data Hub provides a curated catalogue of data, maps and applications suitable for supporting collaborative catchment management planning. The datasets are displayed, interpreted and grouped to help partnerships identify issues and opportunities for collaborative action:

Rivers Trust Sewage Map:

Sewage Map | The Rivers Trust

All English water companies share near real-time Event Discharge Monitoring (EDM) discharge alerts. This data is available via the Water UK National Storm Overflow Hub, and is also published as layers in ArcGIS Online.

Cheshire Local Nature Partnership (LNP)

Home - Cheshire Local Nature Partnership (cheshirelnp.co.uk)

The Cheshire LNP looks for ways to manage, enhance and promote nature recovery and management that will produce outcomes that integrate the needs of nature, people and the economy. The Catchment Partnership works closely with this Team.

Local Nature Recovery Strategy for Cheshire:

[9f0e042f8c520daf000a090c29dfa263_Cheshire___Warrington_Local_Nature_Recovery_Draft_Strategy.pdf](https://ehq-production-europe.s3.eu-west-1.amazonaws.com/9f0e042f8c520daf000a090c29dfa263_Cheshire___Warrington_Local_Nature_Recovery_Draft_Strategy.pdf) (ehq-production-europe.s3.eu-west-1.amazonaws.com)

Cheshire West and Chester Council as 'responsible body' has published the draft Local Nature Recovery Strategy for Cheshire and Warrington, supported by Cheshire East Council, Warrington Borough Council, Peak District National Park Authority, Natural England alongside the Environment Agency and Forestry Commission. The Environment Act 2021 required all areas in England to establish Local Nature Recovery Strategies (LNRSs) aimed at bringing public, private and voluntary sectors together to work more effectively for nature's recovery and enable a collective effort to be focussed where it will have most benefit.

Local Flood Risk Plans and Maps

Planning (cheshireeast.gov.uk)

Drainage and flooding | Cheshire West and Chester Council

We will use these to identify where green and blue infrastructure measures could be targeted, and funded from infrastructure levy, to provide flood risk, water quality, biodiversity, recreational and tourism benefits. Local Neighborhood Plans will also enable the partnership to identify areas of new development and the opportunities they might bring to embed CaBA integrated multi benefits into infrastructure development in line with our core objectives.

Water Company Asset Management Plan:

Our Future Plans (unitedutilities.com)

We will use this to understand where the priorities are for United Utilities and identify opportunities for partnership working.

There are many organisations looking to prioritize where they spend money and undertake actions to provide the best outcome for their priority objectives. The best way to make use of these different prioritisation tools and plans is to use them in combination to identify areas of the catchment, and possible projects, which will provide benefits to multiple partners, as this will provide a strong business case for future funding bids. The above links provide a small snapshot of online resources and information.

3.0 Project Action Plan

The Weaver Gowy Catchment Partnership provides a forum to support joint working. The Action Plan draws together projects that have been developed by partners, some complementing wider initiatives in the catchment that together will help to improve the health of the water environment.’
 “Rachel Argyros – Environment Agency Weaver Gowy Catchment Coordinator”

3.1 Case Studies

The following spreadsheet provides a snapshot of projects delivered through our collaborative Action Plan. Please contact sara.clowes@groundwork.org.uk if you’d like a copy of our current Action Plan

Project Name	Location/Waterbody	Project description & Outcomes delivered	Date of Project	Lead Organisation
Weaver Valley Business Pollution Risk Reviews	River Weaver	Environmental Management Specialists from Groundwork undertook 20 audits of businesses located along or close to the River Weaver. Their business operations were reviewed and actions and improvements identified to reduce pollution risks from company operations	2013-2014	Groundwork Cheshire Lancashire and Merseyside (CLM)
Rookery Brook Rural Diffuse Pollution project	Rookery Brook	Project to reduce the impact of rural diffuse pollution from rural land use targeting elevated phosphates in the Lower Rookery Brook catchment. Farm Advisers worked with selected farmers and landowners to improve the water quality through on-farm nutrient management and natural flood management mitigation measures	2015-2016	Reaseheath Agricultural College
Cheshire Agriculture project	Gale, Arley & Smoker Brooks, Rookery Upper, Lower and Burland & Brindley Brooks and Sales, Edleston and Barnett Brooks	Work to reduce the impact of rural diffuse pollution from agricultural land use in high priority areas in Cheshire. Targeted farm visits to provide advice on water quality, flood attenuation, habitat creation and invasive species. Collaboration with Cheshire Wildlife Trust on promoting water vole management on Rookery Brook catchments. Farm specific summary reports produced with priority actions for each site highlighting both environmental issues and farm business costs/benefit.	2016-2018	Reaseheath Agricultural College
Delamere and Manley diffuse pollution (Safe Guard Zones)	Crowton, Cuddington and Darley Brooks, and Salters, Ashton and Milton Brooks	Project tackling diffuse pollution impacting on surface waters and groundwater safeguard zones.	2016-2018	Reaseheath Agricultural College
Danes Moss	Danes Moss	A scheme to restore the hydrological conditions of Danes Moss to facilitate the establishment of lowland raised bog communities.	2017-2018	Cheshire Wildlife Trust

Project Name	Location/Waterbody	Project description & Outcomes delivered	Date of Project	Lead Organisation
Weaver Gowy Story Map	Catchment-wide	An online interactive GIS Mapping system managed by Groundwork CLM for the benefit of all CaBA partners to ensure that up to date information about this catchment is readily available for partners and stakeholders to review and use to maximise opportunities to develop and deliver integrated multi benefit initiatives. Requires funding to maintain this site. No further finance has been provided	2013-2014	Groundwork Cheshire Lancashire and Merseyside (CLM)
Spatial Planning in Action	All Waterbodies across the HS2 corridor	Students (University of Liverpool) doing Civic Design and Masters in Town and Regional Planning. Spatial Planning. Students worked with a the Weaver Gowy Catchment Partnership to develop a series of Natural Capital Plans over the course of the semester. Production of 5 x project proposals in conjunction with Catchment stakeholders. Presentations delivered at a celebratory event at the Anderton Boat lift.	2017-2018	University of Liverpool
Business Support	Catchment-wide (focused on 2 industrial estates in Winsford & Sandbach)	Provision of advice, support and audits to local business on key areas of water management to reduce and prevent diffuse water pollution.	2018-2019	Groundwork CLM
Upper Dane Farming Advisory Programme	Upper Dane	Dane Catchment Advisors employed by Cheshire Wildlife Trust working with landowners to help keep the waters of the Peak District clean and reduce pollution in the river Dane. Working in partnership with United Utilities, The Wildlife Trust carry out farm visits and advise landowners on how they can improve their farming practices to get the best for water, wildlife and for their businesses. We also undertake small capital projects on farms which will improve water quality. Offers spraying equipment ‘MOTs’; free farm chemical disposal; Advises on soil and nutrient management; Incentivizes alternative ways to tackle slug and snail control; Supports woodland grant scheme applications; Gives practical advice to improve the water environment. Promotes the scheme and the Water Safeguard Zone. Administers the United Utilities’ interventions grant scheme to deliver practical work that will improve water quality and biodiversity. All the work is supported by United Utilities’ Sustainable Catchment Management Programme (SCaMP).	2018	Cheshire Wildlife Trust, United Utilities

Project Name	Location/Waterbody	Project description & Outcomes delivered	Date of Project	Lead Organisation
#LoveMyRiver	River Dane, River Weaver Northwich	The project engaged local residents in supporting the improvement of the River Weaver, River Dane and its tributaries which run through Northwich within the Weaver Gowy catchment. The project included: Delivery of the 'Yellow Fish' initiative in three principal areas of Northwich where residential neighborhoods have separate sewage systems or defined surface water drainage connecting roadside gullies with watercourses. The project promoted the message of Only Rain Down the Drain in an attempt to reduce water pollution. Delivery of Connect Right messages detailing the issues around domestic misconnections and inviting householders to check and report any suspected misconnections and seek advice/assistance from the project if needed to confirm the problem and make corrections. Installation of Sustainable Urban Drainage (SUDs)/Rain Garden demonstration projects at two community facilities and three schools in Northwich which currently drain rain-water from roofs into combined sewage systems. Installation of 2 floating habitats along heavily engineered sections of the river including Yarwoods Arm and River Park. Delivery of Citizen Science and Walkover surveys programme involving LMR volunteers and school groups. Citizen Science water quality testing will focus on areas where Yellow Fish and Connect Right projects are active and where surface water drainage outfalls into watercourses. Delivery of INNS control along 1km section of River Dane, upstream of the confluence with the River Weaver, focusing on removal of Himalayan balsam prior to seeding to reduce seed bank locally year-on-year. The programme aims to reduce the density of Himalayan Balsam stands in each subsequent year, allowing native vegetation to re-establish and prevent erosion of banks during winter months when the ground would otherwise be bare of vegetation following annual die-back of Himalayan Balsam. Benefits Improving Water Quality, addressing water quantity, engagement of local community, development a robust evidence base and enhancing the natural environment.	2017-2019	Groundwork CLM in conjunction with local stakeholders
Impact of Private Sewage treatment works in Safeguard Zones	Safeguard Zones	Providing information and advice to owners of septic tanks on their proper use and maintenance.	2018-2019	United Utilities
Lower Dane Leaky Dams	Lower Dane, Middlewich to Northwich Inc. Sandback Flashes	Installation of a series of engineered leaky dams/interventions to attenuate flow and improve water quality in receiving watercourses. Focus on trapping nutrients and reducing silts reaching watercourses from adjacent farmland.	2019-2020	Mersey Forest / Elm Associates

Project Name	Location/Waterbody	Project description & Outcomes delivered	Date of Project	Lead Organisation
Cheshire Business Audits	Catchment-wide (focused on 3 estates in Winsford, Frodsham, Appleton) Locations: Millbuck Way Industrial Estate Sandbach and Wharton Dovefields Industrial Estate Winsford.	A series of interventions with local businesses located within pollution hot spots in the Weaver Gowy Catchment. Businesses are engaged based upon a risk-based approach to target sites that were most likely to present a high risk of diffuse industrial pollution entering the water catchment. Engagement of companies to deliver a site-based water pollution risk review. Provision of information and advice to support the business to address actual or potential risk, including signposting to further support and guidance. Delivery of follow up work with companies where additional support will generate enhanced outcomes from the project. The project successfully engaged 16 companies and is providing advice and information to reduce diffuse industrial pollution. This project has been an excellent example of the CABA approach reaching into companies, in a non-threatening manner, facilitating joint agreement on action to reduce pollution risks to local water courses, educating business managers and owners whilst raising awareness of best practice and pollution legislation. The project has enabled identification of opportunities for improvement, whilst providing follow up support to drive forward improvements ensuring practical action is taken to reduce pollution risks.	2019-2020	Groundwork CLM
WaterZone	Lower Weaver (Northwich)	Groundwork CLM-led project in 2020-21 with funding from the Environment Agency's WEIF programme. Primarily aimed to reduce urban diffuse pollution from combined and separate sewer systems: Delivery of Yellow Fish initiative through educational sessions to protect 8 surface water outfalls on the Dane and Weaver. The project installed a series of 12 individual Sustainable Urban Drainage systems at 3 community premises around Northwich. These will help reduce peak volumes of rain water entering the combined sewer system and reduce the likelihood of Combined Sewer Overflows polluting the River Weaver and River Dane.	2020-2021	Groundwork CLM
Delamere Wetland Project WEG	(Site of special scientific interest) SSSI Meres Lower Weaver Delamere, Hatchmere, Flaxmere	Delamere Wetland Project to improve the conservation status of water-dependent habitats across four designated sites in the rural Delamere landscape. The sites feature a suite of peaty wetland habitats such as fen, bog, standing open water and wet woodland. Using a combination of contractors and volunteers the project improved wetland habitat quality by reducing the presence of invasive species such as Himalayan balsam, Japanese knotweed and Rhododendron across 3 of the sites. Restoring fen and bog habitat adjacent to Hatch Mere SSSI and in Flaxmere SSSI through tree removal, scrub control and ditch blocking to remove invasive species and increase water retention on site. Improved conditions for macrophyte growth at Hatch Mere by expanding the fish exclusion zone.	2019-2021	Cheshire Wildlife Trust

The Weaver Gowy Catchment

Project Name	Location/Waterbody	Project description & Outcomes delivered	Date of Project	Lead Organisation
Upper Dane Farm Facilitation Group	Upper Dane headwaters	Working in conjunction with the Dane Headwater Catchment Sensitive Farming group this project delivered a number of Natural Flood Management (NFM) activities in the area of the Upper River Dane catchment in the Cheshire Peak, Installation of a suite of natural flood management (NFM) interventions adopting an holistic, hands-on approach to undertaking interventions in the catchment, including: clough woodland planting, installation of in-channel attenuation features grip blocking, floodplain attenuation features, and riparian buffering riparian buffering. & engineered log jams. In-channel attenuation features, clough woodland creation, sympathetic riparian buffers created. Monitoring and evaluation of NFM interventions; Engaging local communities and volunteers.	2018 -2021	Cheshire Wildlife Trust
Slow the Flow Upper Dane	Upper Dane headwaters	A landscape scale project delivering natural flood management (NFM) interventions on farms throughout the Upper Dane catchment. In total, over the course of three years, the scheme delivered the following capital works across 7 farm holdings; 9.75ha newly planted woodland, 30 engineered timber dams, 24 attenuation storage scrapes and 1200m of riparian fencing. Alongside this, it has collected valuable monitoring information on the effectiveness of NFM interventions, to add to the national evidence base for nature-based solutions.	2018-2021	Cheshire Wildlife Trust
Upper Weaver Water Quality Testing	All Waterbodies from Barnett Brook to source	Cheshire Hub Education Programme- Water Quality Testing and Data Collection around Catchment Sensitive Farming issues	2019-2021	Mersey Rivers Trust
Lower Dane Farm Facilitation Group	Lower Dane, Middlewich to Northwich Inc. Sandbach Flashes SSSI	Farmer network focusing on flood management, pollution mitigation works and protection of Sandbach Flashes SSSIs. Targeted events and training organised by and for the farmer group to facilitate peer-to-peer knowledge exchange on catchment issues.	2018-2021	ELM Associates and Mersey Forest
Lower Dane Interventions Phase 2	Lower Dane	Installation of buffer strips, 2.6Ha priority wet woodland restored and 1000 trees planted	2020-2021	ELM Associates and Mersey Forest
Gowy Water Environment Improvements	Gowy Catchment- R. Gowy, Stanny Mill Bk, Ashton Bk, Milton Bk, Salters Bk, Wirral & West Cheshire Aquifer	Engaging with landowners and key stakeholders in the River Gowy Operational Catchment. Delivered farm visits and walkover surveys to identify potential issues. Implement targeted improvements/ interventions on the ground to improve the ecological status or potential of the water body. Produce Water Management Plans for landowners	2019-2021	Cheshire Wildlife Trust

The Weaver Gowy Catchment

Project Name	Location/Waterbody	Project description & Outcomes delivered	Date of Project	Lead Organisation
Upper Weaver Water Environment Improvements	Upper Weaver catchment	Working in partnership; Mersey Rivers Trust, Severn Rivers Trust and United Utilities used funding from the Water Environment Grant to help protect and improve the water quality in the Upper Weaver. Farms were provided with free advice, water quality management plans and small grants to implement the water quality improvement measures identified in the plans. 80 water management plans written, 40 farms committed to works with funded interventions, Over £150k of funding provided to farms. Yard works to separate clean and dirty water and reduce foul drainage runoff and the risk of water pollution. Gateway/ crossing point resurfacing: to prevent erosion and reduce the risk of water pollution from surface runoff. Fencing: to prevent livestock entering water courses, reducing erosion of banks and soil runoff. Interventions to provide livestock with drinking sources alternative to the watercourse in order to reduce bank erosion, runoff and water pollution from faecal contamination and mobilised sediments. Tree and hedge planting: to reduce soil erosion and runoff and extend or link existing hedgerow to create wildlife corridors. Soil management: aeration, sward lifting, arable subsoiling and the provision of winter cover crops and under sown cereal crops to ensure that the more productive topsoil remains in fields.	2019-2021	Mersey Rivers Trust and United Utilities
Valley Brook-River Restoration	Valley Brook - Valley Court to Queens Park Drive	In channel restoration to address heavily modified water body mitigation measures to renaturalise the channel	2024	Environment Agency
Valley Brook - Feasibility & mitigation measures Project	Valley Brook	Feasibility study undertaken to determine river restoration options that address mitigation measures	2021-2022	Environment Agency
River Croco Restoration Project	River Croco	Fencing to reduce poaching along river bank, Invasive Non-Native Species (INNS) targeted work and creation of ponds to improve biodiversity	2021-2022	Cheshire Wildlife Trust
Slow the Flow Northwich	Lower Weaver Marbury Park	A leaky dam programme linked to Marshalls Arm, Anderton and Marbury and Cheshire Wildlife Trust sites	2021-2022	Groundwork CLM

The Weaver Gowy Catchment

Project Name	Location/Waterbody	Project description & Outcomes delivered	Date of Project	Lead Organisation
Beaver Re-introduction	Hatchmere in Delamere	A pair of beavers were released into a 4.5 hectare enclosure near Hatchmere in Delamere. The beavers will create a new landscape as they adapt to their surroundings. Removing trees will break up the canopy, allowing sunlight on to ground vegetation and bringing the woodland floor to life. With their dams holding back water on the site, water flow is slowed, dropping out the polluted sediments that would otherwise flow into Hatchmere lake It will also make new space for insects, invertebrates and fish.	2020-2021	Cheshire Wildlife Trust
Dispelling the Myth	Catchment Wide	Engaging Abstractors in Cheshire to educate and raise awareness about healthy water Lifecycle management. Encourage sign up to Water Resources West,	2024	Water Resources West and Weaver Gowy Catchment Partnership
Water Friendly Farming Events - Valley Brook	Englesea Brook	Engagement events for farmers across the Valley and Englesea Brook catchments as part of the Valley Brook Project, funded by the Bentley Environmental Foundation. An event was held at the White Lion Pub in Weston. 20 farmers and landowners attended to hear presentations from Mersey Rivers Trust and ELM Associates. Mersey Rivers Trust presented on the work across the Valley and Englesea Brook catchments, invasive non-native information for landowner control and the opportunities to get further as the Trust continues to offer of FREE Water Management Plans for farms in the area.	2024	Mersey Rivers Trust / ELM Associates
Water Friendly Farming Events	Upper Weaver	Pie and Pint engagement event for farmers across the Upper Weaver as part of the Upper Weaver Water Friendly Farming project funded by DEFRA and United Utilities, at the Alvanley Arms pub in Cotebrook. 20 farmers, landowners and members of the community attended to listen to presentations given by both Mersey Rivers Trust and Staff from Cheshire West and Chester Council to those present. Mersey Rivers Trust presented on the recent successes of the work undertaken with farms in both Darley and Ash Brooks, and the opportunities to get further involved in this as Mersey Rivers Trust continue to offer free Water Management Plans for farms.	2023/24	Mersey Rivers Trust

The Weaver Gowy Catchment

Project Name	Location/Waterbody	Project description & Outcomes delivered	Date of Project	Lead Organisation
Upper Weaver Farm Project	Darley Brook, Ash Brook, Valley Brook and Englesea Brook	Working with farms in the Darley Brook, Ash Brook, Valley Brook and Englesea Brook catchments providing farmers with free farm business advice and a Farm Water Management Plan. Through conversations with the farmer, and visits to the farm yards and fields, a Water Management Plan is created that will give recommendations and advice on new opportunities for managing surface water, runoff, slurry, livestock and more. Following the creation of a Farm Water Management Plan there will also be the potential for grant funding to implement some of the recommendations outlined in the plan.	2024	Delivery complete Programme ongoing Mersey Rivers Trust
Floating Pennywort Clean Up Volunteer Day 2024	Winsford	A partnership between multiple Weaver Gowy Catchment Partnership members. Maximising volunteer people power to clear INNS Floating Pennywort from our waterways in Cheshire. 2024 saw Canal and Rivers Trust, Groundwork CLM, Angling Trust, Environment Agency and United Utilities collaborate on a team clean up along the river in Winsford	2024 delivery complete Programme ongoing	Angling Trust in collaboration with local community, Canal and Rivers Trust, Groundwork, Environment Agency and United Utilities
Duckow Weir Removal Project - Feasibility Stage 1	Upper Weaver - River Duckow	Mersey Rivers Trust had a grant from the European Open Rivers Programme to work on the Phase 1 feasibility of removing the disused Gas House Weir on the River Duckow on the Shavington Estate near Adderley, south of Audlem. The River Duckow is a 14km long river in the Upper Weaver catchment in south Cheshire and is home to a variety of coarse fish, small trout and salmonids, which support small angling clubs along its length. The river also provides a linking corridor between the mosaics of ancient woodland and threatened traditional meadow habitats along its length. The power of the River Duckow has historically been used in the gas producing industry, which supplied gas to local homes during the 1800s for a brief period of time before production was abandoned. Removing the weir will undoubtedly cause changes in flow and water levels. This will enable the river to take back its natural processes of erosion and deposition, reducing siltation upstream and erosion downstream of the weir.	2023/4	Mersey Rivers Trust, Shavington Estate / European Open Rivers Programme

6.0 Partnerships

The Weaver Gowy Catchment Partnership is hosted by Groundwork Cheshire, Lancashire and Merseyside and consists of local authorities including Cheshire East and Cheshire West and Chester together with the Environment Agency, Natural England, Cheshire Wildlife Trust, the National Farmers Union, United Utilities PLC, Mersey Rivers Trust, Mersey Forest, Angling Trust, Canal and Rivers Trust, Golf England, Estates, Landowners, Farmers, Business plus community support groups and volunteers



Annexes for Catchment Management Plan

Annex 2.1 National Data and Evidence Resources

Each river basin district has a plan which sets out the environmental objectives and a summary programmes of measures to achieve those objectives. The Catchment Data Explorer (CDE) is a tool provided by the Environment Agency that allows users to explore and download information about the water environment used in River Basin Management Plans (RBMPs). You can access live and historic hydro metric and continuous water quality data. The tool enables you to search by various parameters such as water body, catchment, place, and grid reference and provides visualizations and summaries of catchment data, making it easier to understand the water environment in your area.

England | Catchment Data Explorer

The Catchment Based Approach site is intended to provide an online community platform and knowledge hub for individuals interested in participating in collaborative and cross-sector management of the water environment. The site includes an online discussion forum, training and knowledge resources, examples of best practice, tools and delivery case studies encompassing a broad range of policy and practitioner interests.

Home - CaBA (catchmentbasedapproach.org)

Rivers Trust State of our Rivers Report State of our Rivers Report 2024 | The Rivers Trust

Ordnance Survey (OS) provides a free service to download Open Data geospatial datasets from OS and other data providers. The site contains over 144,000 km of water bodies and watercourses map data. These include freshwater rivers, tidal estuaries and canals. Understand how water bodies and watercourses in Great Britain join up.

OS Data Hub | Free Maps & API Data for Developers

Natural England Open Data Geoportal provides free and open access to the definitive source of geographic products, web applications, story maps, services

Natural England Open Data Geoportal (arcgis.com)

Dispelling the Myth around Water Resources is an editable resource and associated guidance document can be used alongside the video to bring together water resources evidence and information in a cohesive narrative, supporting stakeholder engagement and informed decision making.

'Dispelling the Myth' around water resources - CaBA (catchmentbasedapproach.org)

Rivers Trust Sewage Map
Sewage Map | The Rivers Trust

Canal and River Network Mapping

<https://canalrivertrust.org.uk/canals-and-rivers>

Mapping Invasive Non-Native Species (INNS) A free to use and aims to provide an effective resource to support INNS and coordinate efforts to address the challenge in the UK

<https://innsmapper.org/>

Riverfly Partnership survey methodology, training and data management:
<http://www.riverflies.org/>

Riverfly Partnership survey methodology, training and data management:
<http://www.riverflies.org/>

The Weaver Gowy Catchment

Mapping Invasive Non-Native Species (INNS)

INNS Mapper Free to use and aims to provide an effective resource to support programmes and coordinate efforts and is open access and publicly available.

Freshwater Watch water quality survey toolkit, training and data management:

<https://freshwaterwatch.thewaterhub.org/>

From Feb/March 2017, Freshwater Watch CaBA groups will have the ability to brand their own landing page and display maps with just their own group results.

Modular River Survey:

<http://modularriversurvey.org/>

Toolkit, training and data management for river habitat survey

Annex 2.2 Local Evidence tools and resources

Our Catchment Partnership has an online Story Map which provides local case studies of projects delivered, mapping and much more!

Weaver Gowy Story Map (arcgis.com) or use the QR code on your mobile device.



Water Company North West United Utilities - Water for the North West

River Obstacles app and data management for fish migration barrier assessment:

River Obstacles (arcgis.com)

My Scimap:

<https://my.scimap.org.uk>

A free online version of diffuse pollution mapping



