



CHANGING PLACES  
CHANGING LIVES

# IMPACT REPORT 2025

LAUNCHING OUR CELEBRATIONS FOR  
35 YEARS OF GROUNDWORK SOUTH &  
NORTH TYNESIDE (1991-2026)





**GROUNDWORK**  
SOUTH & NORTH TYNESIDE

## FOREWORD

---

Groundwork is committed to creating a future where every neighbourhood is vibrant and green, every community is strong and no-one is held back by their background or circumstances. Through our vision of 'Changing Places, Changing Lives' we help people and communities to build community resilience, improve and protect green spaces, lead more active lives, gain confidence to get back into training or work and overcome significant challenges such as food and fuel poverty, isolation and loneliness, low skills and poor health.

In 2026, we're proud to celebrate 35 years of Groundwork in Tyneside. As we look back on our journey, our work has never been more vital and I'm pleased to share some of the stories of change below, showcasing the difference we have made over the years. Looking forward we will continue to collaborate with partners to create green jobs and deliver impact across our four key areas: Sustainable Communities, Raising Aspirations, Creating Better Places, and Enriching Lives Through Culture and Heritage – focusing our efforts where they're needed most.

This report sets out what we have achieved in the last year across Groundwork and our associated subsidiaries TEN North East and Windmill Trading Company as well as sharing some of the inspiring stories of changes brought about through our projects, programmes and partnership working. **We respond to local needs, whilst working closely with our sister Trust Groundwork North East and Cumbria, who collaboratively lead on some areas of specialism across Tyneside.**

The Trustees and myself are so proud of the work and positive impact we make. Our services and programmes delivered would not be possible without the support of many partner organisations, funders and commissioners, and we would like to thank them for their on-going commitment to helping communities and supporting us in delivering our vision of Changing Places, Changing Lives.

**Andrew Watts - Chief Executive Officer**

**IMPACT REPORT 2025**



**Chief Executive**

Groundwork South and North Tyneside



**GROUNDWORK**  
SOUTH & NORTH TYNESIDE

## FOREWORD

---

As Chair of the Board of Trustees for Groundwork South and North Tyneside I am delighted and honoured to help present this report on our achievements and impact. It seems that our work has never been more important in the face of evidence of the impacts of climate change on people and places, local as well as national landscapes and on wildlife. These effects contribute to and stem from growing economic pressures on families and public services, an acknowledged increase in child poverty and widening inequalities within society.

So our programmes which bring people together, build connections across localities and work with the natural environment to support thriving communities are addressing these issues directly.

Groundwork has always been known for its dedication to solving problems, bringing solutions and empowering people and communities. The board of Trustees are very proud of our dedicated staff and volunteers and the outstanding results they are helping to achieve, described in this report. The place-based partnerships which we support and contribute to across South and North Tyneside, and our national links into the wider Groundwork Federation, have brought much hope and happiness to many individuals and are contributing to lasting and positive changes.

**Diana Pearce – Chair**

*Diana Pearce*

IMPACT REPORT 2025



**Chair of the Board**  
Groundwork South and North Tyneside



**GROUNDWORK**  
SOUTH & NORTH TYNESIDE

## WE ARE PASSIONATE ABOUT:



**Creating Better Places:** Developing accessible high quality built and natural environment that provides natural capital and wellbeing benefits.



**Raising Aspirations by Creating Better Prospects:** Supporting individuals and families to be resilient, confident, ambitious and independent



**Empowering Fair and Sustainable Communities:** Reducing inequalities by supporting and enabling individuals and communities



**Enriching Lives through environment, culture and heritage:** Inspiring engagement and discovery informed by our past, present and future.





**GROUNDWORK**  
**SOUTH & NORTH TYNESIDE**

## OUR VALUES

---

### THE GROUNDWORK APPROACH:

We will deliver impact through a range of diverse local and national projects, programmes and services, responding to the changing needs of local communities and the opportunity to build powerful partnerships to unlock new resources.

Wherever and however we deliver, our approach will be informed by the following commitments:



We will invest in the places and people that need us most. Prioritising our resources to bring about lasting change by building skills and capacity within local communities where we can make most difference.



We will work with local leaders and listen to local voices. Ensuring our work is shaped by those it is designed to benefit and adding value to the assets that exist in local areas.



We will grow a culture of equity and inclusion operating transparently and with integrity, and seeking out a diversity of viewpoints, both in the work we do and the people we employ.



We will be committed to collaboration – forging strong partnerships, contributing to a thriving community sector and helping others lead where this will achieve greater impact. We will act as environmental exemplars – championing practical action to combat the climate and nature emergency and measuring and reducing our own environmental impact



# 35 YEARS OF CHANGING PLACES AND CHANGING LIVES

**1991**

Groundwork launched in Tyneside - a pioneering partnership

**1997**

National Grid partnership to bring nature connection to children, young people and communities

**2005**

Land Trust partnership to enhance and manage Monkton Community Woodland for people and wildlife

**2007**

Community recycling shop opens at Middlefields Recycling Village, aiding a circular economy

**2010**

Opening of bespoke environmental education centre West Boldon Lodge

**2015**

Partnership with Sage Foundation delivers social value

**2018**

TEN North East charity integrated into Groundwork

**2019**

Green Doctor Service launched tackling fuel poverty

**2025**

Re-opened Jarrow Archaeological Mission, first excavations in Jarrow since the 1970s



GROUNDWORK  
SOUTH & NORTH TYNESIDE

2025  
CELEBRATING 35 YEARS



**Better Places**

**1996**

Opening of the Eco Centre in Hebburn, at the time it was Europe's most environmentally sustainable building.



**Raising Aspirations**

**2014**

Route2Work specialist College opened, providing tailored learning for students with SEND needs.



**Enriching Lives**

**2016**

Opened Jarrow Hall, sparking cultural revival and earning Accredited Museum Status in 2022



**Sustainable Communities**

**2014**

Marsden Road Centre opened in a landmark visit from HRH Princess Anne.



## **Ernie Henderson**

I came through a 12-month ILM scheme with Groundwork in 2004, starting with guided heritage walks around South Tyneside, and it was one of the best decisions I could have made after long-term sickness.

Thanks to the opportunities and support Groundwork gave me, I progressed into land maintenance and eventually created Land Team, and I'm truly grateful for everything they've given me.



## **Emma Reid**

I started with Groundwork in 2006 on a programme that built my confidence and launched my career, and nearly 20 years on I'm proud to be a Finance Officer. After completing my AAT, I'm very grateful for the opportunities and support that have shaped my career and personal growth.



## Jaymee Smith

I love being a part of the amazing R2W team. I am able to help young people get ready for employment and reach their goals, in a similar way that

I was helped by Groundwork staff back in 2014 through a traineeship!



We've supported thousands of young people to boost their confidence, skills and future opportunities. Dan joined our supported employment programme and shares how it helped him.

*"I've always wanted to work on a farm or in the countryside. This is what encouraged me to apply for this position with Groundwork. I have really enjoyed working with the animals, I get a lot of satisfaction from it. I've also enjoyed coming in to work every day and working with the people on the team. I have an apprenticeship, I'm going to work in a tree plantation. My Apprenticeship is in Tree Surgery, its starts with Level 2, Level 3 and leads on to a degree level qualification at East Durham and Houghall College.*

*This experience absolutely helped me get my apprenticeship. It was the experience that I didn't have before coming that helped secure me this job. This apprenticeship is my ideal job."*



GROUNDWORK  
SOUTH & NORTH TYNESIDE

2025

# THE YEAR IN NUMBERS



**1565**

People helped to reduce domestic energy, water and waste



**647**

Volunteers actively involved throughout the year



**10303**

Young people supported to learn, achieve & thrive



**1326**

Carbon tonnes saved via Green Dr. and circular economy



**67**

Acres of land improved, maintained or actively managed



**45945**

People supported to access culture and heritage



**60**

Community groups supported, building pride of place



**67719**

People engaged and supported across all programmes

# EMPOWERING FAIR & SUSTAINABLE COMMUNITIES



Reducing inequalities by supporting and enabling individuals and communities

[Visit our website for more information](#)

## GREEN DOCTOR - TACKLING FUEL POVERTY

Our Green Doctor Service continues to provide vital support to households struggling with energy costs, delivering impactful measures and advice to support the most vulnerable in our community to save energy and money and have a warmer home. A new Retro-fit scheme also provided information, advice and guidance on home improvements.



Mrs S, from Wallsend qualified for a LEAP visit due to a combination of benefits, health concerns, and income. Mrs. S reached out to LEAP with concerns about her energy usage and keeping bills down.

During the visit she received advice on how to reduce her energy usage and received practical support with 5 LED lightbulbs, and radiator foils were installed on all radiators hung on an outside wall. She also qualified for a replacement new efficient fridge freezer to replace her old inefficient appliance.



£889,324

Identified in new income / savings

\*Note that totals for bill savings following energy savings advice and the installed energy saving measures are counted over ten years, whereas new income from Income maximisation process is the anticipated new income generated in one year.



553

Households supported



4337

Small energy saving measures fitted  
e.g. LED lightbulbs, radiator reflectors and draft excluders



614

(t) carbon tonnes saved

£££

These changes resulted in estimated annual savings of £772!



SOUTH & NORTH TYNESIDE

# EMPOWERING FAIR & SUSTAINABLE COMMUNITIES



Reducing inequalities by supporting and enabling individuals and communities

[Visit our website for more information](#)

## MARSDEN ROAD - TACKLING INEQUALITIES

Supported by the National Lottery Community Fund Marsden Road Health and Wellbeing Centre uses a place-based approach to enable local community action to **foster social connections**. The Centre has gone from having just one volunteer in 2021 to 25 in 2025 helping to run events, activity days, holiday clubs and the community cafe and shop.

The Centre contributes significantly to building **community cohesion**, healthier, safer and more resilient communities, by improving the mental wellbeing of those attending the centre and their families, through activities, one to one support, social action opportunities and regular positive activity, designed to help people connect.



## VOLUNTEERS



92%

feel as if they have contributed to the shape and direction of the centre.



86%

gained skills & qualifications while volunteering



100%

gained more confidence and improved their mental health & wellbeing



*"I am a single parent and I don't drive and me and my son attend as many things as we can, trips craft fairs and themed activities. The centre allows us to take part in activities and trips at a brilliantly low cost, the transport trips are a blessing and I would have struggled during the holidays without the centre. We love it!!"*



A cost benefit analysis showed:

*"For every £1 of public sector expenditure, the Marsden Road Health and Wellbeing Centre project generates £6.29 worth of benefits."*



SOUTH & NORTH TYNESIDE



# CASE STUDY

## Gemma's story

Gemma is in her late thirties with two young daughters aged 3 and 1.

She started her small business after having her first daughter and noticing a gap in the market for a Messyplay class that was inclusive. Her own experience of other Messyplay classes were that they had been quite 'clicky' with people not integrating and reluctant to be honest about what being a mum was really like. Gemma found her experience very isolating and it clarified in her mind that she would have liked to have had support and advice in a more relaxed and inclusive setting.

Gemma started running her own classes after maternity leave with her first daughter and up until she was 8 months pregnant with her second. Unfortunately due to a traumatic birth she struggled to get back into work and was struggling with severe PTSD and depression, losing her confidence and putting her into basic survival mode.

Gemma's luck changed when she met with Katherine from Marsden Road Centre. She found the Centre very different from elsewhere, describing staff as 'like family' going above and beyond to support her. Katherine helped make a plan and source funding and register her business as a Community Interest Company.



*"I was in such a dark place after everything and struggling mentally and physically, I have arthritis which was made a lot worse by the stress, not only from personal things but from the stress of the cost of living and trying to keep my head above water, I lost myself as a person and as dramatic as it sounds Katherine brought me back to life, she made me believe in myself again and I can't thank her enough she literally put me back together and I'm now a better mam and an even stronger woman and I know with her support I will be an even better entrepreneur."*

# RAISING ASPIRATIONS BY CREATING BETTER PROSPECTS



Supporting individuals and families to be resilient, confident, ambitious and independent

## LEARNING AND SKILLS DEVELOPMENT

Our SEN specialist Route2Work College saw a growth in learners supporting 44 young people through to summer 2025, increasing to enrol 48 young people in September 2025.

R2W relocated from Jarrow Hall to the Eco Centre, and it took a lot of hard work from staff and learners to facilitate the move and settle in. Learners engaged in Animal Care, Land Based Studies and Customer Services, functional skills, PHSE and Life Skills.

Alongside vocational qualifications learners gained life skills and sourced work experience placements to gain practical experience of the world of work.



Visit our website for more information  
[route2work.org.uk](http://route2work.org.uk)



- Of 33 learners, 18 achieved their English qualification
- Of 40 learners, 24 achieved their Maths qualification

We retained our Ofsted "GOOD" rating!



## LEARNERS



85%

of learners achieved qualifications in Customer Service/ Land and Animal Care



100%

of learners reported feeling happy and safe at R2W College



96%

learners progressed and had positive destinations



SOUTH & NORTH TYNESIDE



## CASE STUDY

### Jenny's story



Prior to joining Route2Work College, Jenny attended Ashbrooke School. As a young person with Autistic Spectrum Disorder, she had previously struggled with working in large groups, noise levels, handling her emotions and socialising. Jenny had begun to understand how to deal with her mood, however still struggled with anxiety. She enjoyed being alone but found comfort in spending time with animals over socialising with her peers. While at Ashbrooke School, Jenny had started a work experience placement at Bill Quay Farm which she wanted to continue.

Her goals were centred around 'Preparing for Adulthood' with a focus on improving her life skills, independence, and socialisation while working towards her Level 1 Maths qualification. Being passionate about animals, Jenny enrolled onto the Animal Care vocation to gain her Level 2 SETPD and build a foundation for progressing into further education or employment in this sector.

Jenny has thrived and had a notable shift in confidence and established a lunchtime social group called 'In it & Allies' to advocate for the LGBTQ community. She is leaving with Level 2 Maths qualification and Level 2 SETPD in both Animal Care and Land Based Studies. She will be moving on to East Durham College to study Agriculture at their Houghall campus.



Jenny on work placement at Bill Quay Farm.

***"The staff are really friendly, and they're very accommodating for your needs. If you need to access help or assurance in lessons, they're very supportive of that and they do what they can to help you. As well I like how we get plenty of time, and specified days and times, just to hang out with our friends and we can relax. We can also, if we need someone to talk to, we can talk to someone. And we have safe environments where we feel comfortable enough to tell the staff members if there's anything going on at home, or if we have an issue with another student and they help us out with it." - Jenny***

# RAISING ASPIRATIONS BY CREATING BETTER PROSPECTS



Supporting individuals and families to be resilient, confident, ambitious and independent

## LEARNING & EDUCATION THROUGH NATURE CONNECTION

Providing the best start in life, our education team offer sessions linked to the National Curriculum and enrichment activities to support every child to thrive. This year we delivered on-site school visits and outreach-based activity in schools. Our Forest Playschool, tackled child poverty, helping families to immerse in nature and build trusted relationships. Feedback from families attending a programme at West Boldon Lodge, indicated:

- ✓ 77% felt they had better family connections
- ✓ 92% felt more able to engage in their child's learning and play
- ✓ 69% felt their child was more able to express emotions in different situations
- ✓ 100% felt their child demonstrated improved self-confidence in exploring the woodland.



[View our Learning Programme 2025/26](#)

[westboldonlodge.co.uk](http://westboldonlodge.co.uk)

*'The leaders were incredibly knowledgeable and gave just the right amount of information pitched at the correct level. The children really enjoyed their visit. I loved the practical elements to it, which meant that all children were engaged and learning.'*



## LEARNERS



5523

school pupils visited Jarrow Hall



3759

school pupils visited West Boldon Lodge



10842

people attended events at West Boldon Lodge



SOUTH & NORTH TYNESIDE



# CASE STUDY

## Alternative Education Student

### Alternative Education Provision

A new programme designed to help children and young people with barriers to school attendance. Our programmes cover Farm School with elements of animal care, Therapeutic Forest School and nature connection activities.

Student J joined our setting with significant challenges related to emotional regulation and communication. He struggled to remain in a classroom environment, particularly when surrounded by other children. His difficulty in expressing feelings often resulted in verbal outbursts, aggressive behaviour such as shouting, and throwing objects. These behaviours created a barrier to his social development and participation in group activities, and also impacted the learning environment for others.

After observing J's behavioural patterns and emotional triggers, the team collaborated to develop a simple, visual behaviour management system that could empower J to better understand and regulate his actions. This led to the creation of a card system, co-developed with J to give him ownership of his behaviour choices.

**Since the implementation of the card system, J has shown significant improvement in several key areas:**

- ✓ Increased group tolerance: J can now work and play in a group with up to 3 or more peers, a substantial improvement from when he could only be with 1 or 2 children without becoming distressed.
- ✓ Improved communication: J is beginning to verbalize his emotions instead of acting out physically. He is more likely to ask for help or take himself to a quiet area before escalating.
- ✓ Ownership and responsibility: He refers to the card system proactively, often catching himself and saying, "I don't want a yellow today." This shows developing self-awareness and accountability.
- ✓ Reduction in aggressive incidents: The number of aggressive outbursts has noticeably decreased. Staff report that J is more receptive to calming strategies and redirection.

Jarrow Hall Anglo-Saxon Farm, Village and Bede Museum



SOUTH & NORTH TYNESIDE



## CASE STUDY

young carer

# Young Carers

'X' has been involved with our respite service since 2022, initially registered as a young carer for her brother. At the time, she felt able to manage her caring role independently and accessed support infrequently. In April 2024, TEN secured the contract for South Tyneside's Young Carers assessment, and a re-referral for X was received in July due to increased challenges at home. A home visit revealed that her mum had suffered a severe mental health breakdown and was hospitalised, which significantly increased X's responsibilities and emotional strain. A one-to-one session was arranged to explore support options and complete a positive pathway assessment.

During this session, X shared her aspirations to study animal care. Staff helped establish a support link at college and informed the welfare team of her caring role to ensure a smooth transition. Tragically, X's mum passed away shortly after the visit, deeply affecting the family. Despite her grief, X attended an activity session, stepping out of her comfort zone and engaging in animal therapy. She later expressed concerns about securing a work placement for college, and with staff support, explored opportunities with local providers and Jarrow Hall. X chose to volunteer on the farm, where she now actively participates in animal care as part of her 110-hour placement.

Staff continue to check in regularly and have invited her to a residential break in March to celebrate Young Carers Action Day. This ongoing support has been made possible thanks to our funders. 'X' shared her gratitude, saying, *"Life seems a little easier now thanks to you"*.

*"Life seems a little easier now thanks to you".*



# RAISING ASPIRATIONS BY CREATING BETTER PROSPECTS



Your Future – Our Business

[southtynesideyoungcarers.org](https://southtynesideyoungcarers.org)

[Visit our website for more information](#)

@styoungcarers

Supporting individuals and families to be resilient, confident, ambitious and independent

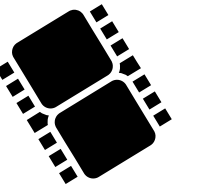
## YOUNG CARERS RESPITE SERVICE

Young carers enjoy a positive childhood through a wide range of services, our Young Carers programme offers respite and emotional support to Young Carers in South Tyneside aged 5 – 24.

In April 2024 we started delivery of the South Tyneside Council Statutory Young Carer assessments – identifying hidden young carers and creating support plans. This now offers a seamless link into our respite service.



A new short film was created to raise awareness of the service and tell Young Carer stories in their own words. [Watch here!](#)



283 families received significant intervention in the form of a listening ear /emotional support, referrals to external services, online support and home visits, preventing crisis, improving family relationships and widening networks of support.



283

## Completed 248 Young Carer Assessments



99 Education wellbeing drop-in sessions delivered, helping to build resilience and coping mechanisms.

248

## YOUNG CARERS



836

young carers supported with respite support activities.



173

families accessed family days with trip to mini-golf, zoo, cinema, etc.



570

respite packs distributed with total of 125 activities

Progression pathways were developed with 46 Young Adult Carers (aged 16-24) providing IAG, listening ear emotional wellbeing services, CV development, one to one coaching, financial and benefits advice and support to access further education, employment and training. **Helping young carers be the best they can be.**



46



SOUTH & NORTH TYNESIDE

We provided 2 Residential respite breaks supporting 16 young carers, building lasting friendships and reducing isolation.



# CREATING BETTER PLACES

Developing accessible high quality built and natural environment that provides natural capital and wellbeing benefits.



[Visit our website for more information](#)

## LAND MANAGEMENT AND NATURE BASED SOLUTIONS

Groundwork South and North Tyneside manage Monkton Community Woodland on behalf of the Land Trust. A thriving woodland connecting communities with nature, offering rich wildlife, scenic trails, and striking sculptures. The woodland provides vital links between communities and a wonderful network of green spaces and wildlife, as well as opportunities for volunteering and health activities.



**Monkton Community Woodland**  
Home to the rare Dingy Skipper butterfly, sponsorship from TT2 has enabled habitat improvements and the installation of a butterfly art trail to encourage exploration and support nature connection.



SOUTH & NORTH TYNESIDE

## LAND MANAGEMENT



267



Improved gardens across South Tyneside



# CREATING BETTER PLACES

Tackling inequalities through nature connection

## GREEN EXERCISE - GREEN GYM

The Green Gym is funded by Public Health in South Tyneside and supports sedentary individuals to take their first steps back into physical activity.



We deliver a weekly programme of environmental improvements, conservation and horticulture activities, structured as a physical work-out in local community green spaces.

The main aims are to support people to make new friends, reduce isolation, build confidence, **learn new skills**, get active and spend time connecting with nature, **improving both physical and mental wellbeing**.



**124**  
people attended  
Green Gym



**70%**  
felt more cheerful and  
in good spirits



**60%**  
have improved  
quality of life

*“Confidence has been a problem for me but the sessions have helped me meet people and I’ve learnt some new skills”*

[Visit our website for more information](#)

*"I wanted to do some volunteering after my caring role ended, as a way to build confidence and get involved with the community. The Green Gym seemed like a good fit because I have a long-standing interest in the natural world and the environment.*

*I've enjoyed working outdoors with a nice bunch of people and I definitely feel it's had a positive effect. After a session, I always feel as if I've had a good workout and being able to see the tangible results of the labour is very satisfying. I also feel I'm having a (small) positive impact on the local environment and helping to improve the area for others in the community."*



SOUTH & NORTH TYNESIDE



# CASE STUDY

## Upcycling Workshops

*"I don't have much space or resources at home for upcycling, so it has been a real benefit having a dedicated large space to work in, especially so close to home. Learning and practicing new skills has given me the confidence to plan projects, but to also just have a go and work things out for myself. I'm more confident in handling tools and equipment. I love the ethos of reusing, recycling and upcycling. It's fantastic to see something unloved or damaged that would be thrown away turn into something useful and attractive again. It's really interesting to hear about other people's motivation for their projects and why they chose them. I like finding out about the background of an item they're working on, or where they found it, and where it will end up. I don't have family or friends who share any interest in upcycling or anything creative, so I've loved working alongside other people with a shared interest. In my day-to-day life I'm an unpaid carer for a family member with high level needs. I also have a serious health condition. I have high levels of anxiety and stress so attending the group helps distract me."*

**We facilitated 90 community upcycling workshops engaging over 300 individuals.**

As well as raising awareness of the importance of climate action and providing skills, community sessions helped to break down barriers for friendships, build confidence and help people to feel connected.



# POWERING THE CIRCULAR ECONOMY



South Tyneside Council



Reducing inequalities by supporting and enabling individuals and communities

[Visit our website for more information](#)

## THE GROUNDWORK SHOP

Our work aids the **transition to net zero** and supports vulnerable households. We champion a culture of reuse and repair, engaging communities from across South Tyneside, showing how statutory bodies, support organisations and local communities can come together to tackle the climate crisis.

We launched a new website to encourage private donations and new delivery service hours meant that people without transport or means of accessing the shop site were still able to benefit.



## THE GROUNDWORK SHOP SAVED



159



Tonnes of preloved furniture from end of life, creating a circular economy

We helped previously homeless people to furnish their accommodation, supported people fleeing domestic violence and gifted items to refugees, connecting with partners to **tackle poverty** and reach 83 vulnerable households in 24/25.



83



Learning hub launch event at Jarrow Hall Anglo-Saxon Farm, Village and Bede Museum

[jarrowhall.com](http://jarrowhall.com)



SOUTH & NORTH TYNESIDE

# ENRICHING LIVES THROUGH ENVIRONMENT, CULTURE & HERITAGE



Supported by  
**ARTS COUNCIL ENGLAND**



Inspiring engagement and discovery informed by our past, present and future.

[Visit our website for more information](#)

[jarrowhall.com](http://jarrowhall.com)

## JARROW HALL ANGLO-SAXON FARM VILLAGE & BEDE MUSEUM

We continued with our access for all ambition – ensuring that culture is there for everyone to enjoy with accessible programming and volunteering opportunities.

- ✓ **Co-creation** - we worked with residents and community groups to curate temporary exhibitions, inspiring creativity and unveiled a blue plaque in memory of Dame Rosemary Cramp.
- ✓ **Out & About** - we took our collection out and about in South Tyneside with activity drawing on the masterplan themes of Science, Communication and Climate Change, breaking down barriers to accessing culture.
- 🎥 **Bringing history to life** - with living history re-enactors and practical heritage craft demonstrations, building skills and resilience. Watch Jarrow Hall's - [Skills from the Past for the Future](#) film on YouTube.



**29731**

visitors and school children visited Jarrow Hall



**4.5**

retained our Trip Advisor rating and 4.6 on Google Reviews



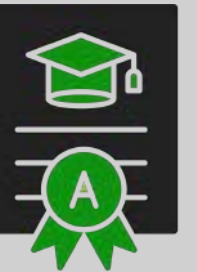
**549**

unique pre-school children attended monthly events



*“Really great presentation area about Bede and the setting he lived in. There were a few folks reflecting Anglo-Saxon life in the recreated village, cooking on fires and dying threads.”*

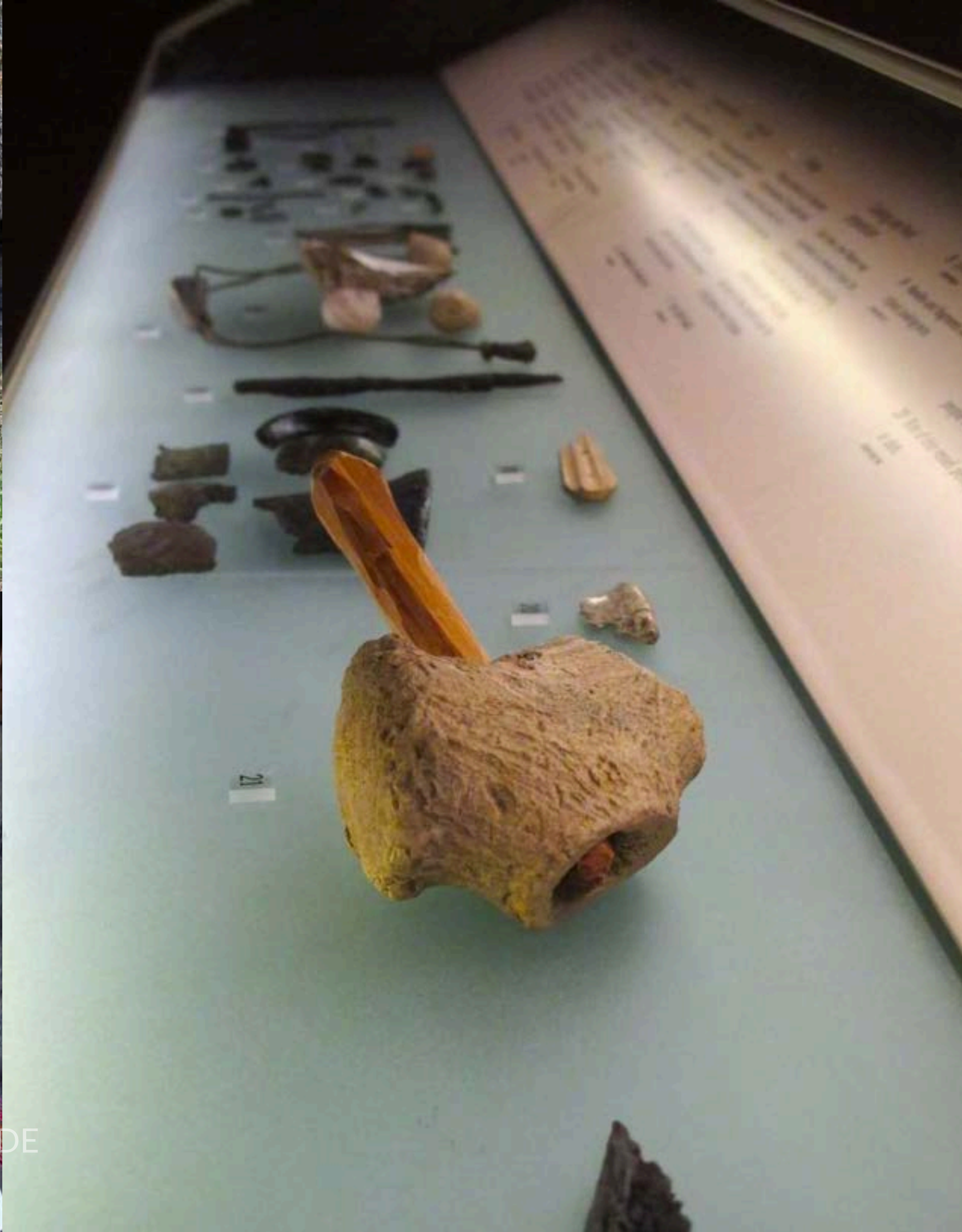
**Strengthening cultural partnerships** - we hosted a Collaborative Doctoral Award (PhD) Student from Northern Bridge Consortium as well as being an active partner in the South Tyneside Cultural Partnership delivery the Making Waves Strategy.



We became an **Arts Council England National Portfolio organisation** in April 2023 helping to deliver the Let's Create Strategy. We bring strengths in community engagement, bringing rich cultural experiences to audiences across the North East.



**SOUTH & NORTH TYNESIDE**



# ENRICHING LIVES THROUGH ENVIRONMENT, CULTURE & HERITAGE

Increasing volunteering and tackling loneliness through the Know Your Neighbourhood Fund



Inspiring engagement and discovery informed by our past, present and future.

[Visit our website for more information](https://www.jarrowhall.com)

[jarrowhall.com](https://www.jarrowhall.com)

## KNOW YOUR NEIGHBOURHOOD & UK SHARED PROSPERITY FUND

A volunteer-based scheme that engaged people experiencing or at risk of isolation. We supported **skills development** helping to provide **access to good jobs** by facilitating a series of social action opportunities across the farm and grounds to support people to **connect** to each other and nature, learn new skills and **feel part of the community**.

### Opportunities covered:

- Living History Group Jarrow 700AD
- Visitor Services Team, working front-of-house
- Animal Care on our farm
- Museum Collections Care
- Education and community events support
- Green exercise and environmental improvement
- Volunteer led activities (Herb Gardener, Anglo-Saxon DIY, Craft, Create and Catch-up)

## End of project survey evidenced;



153

volunteers engaged with the project



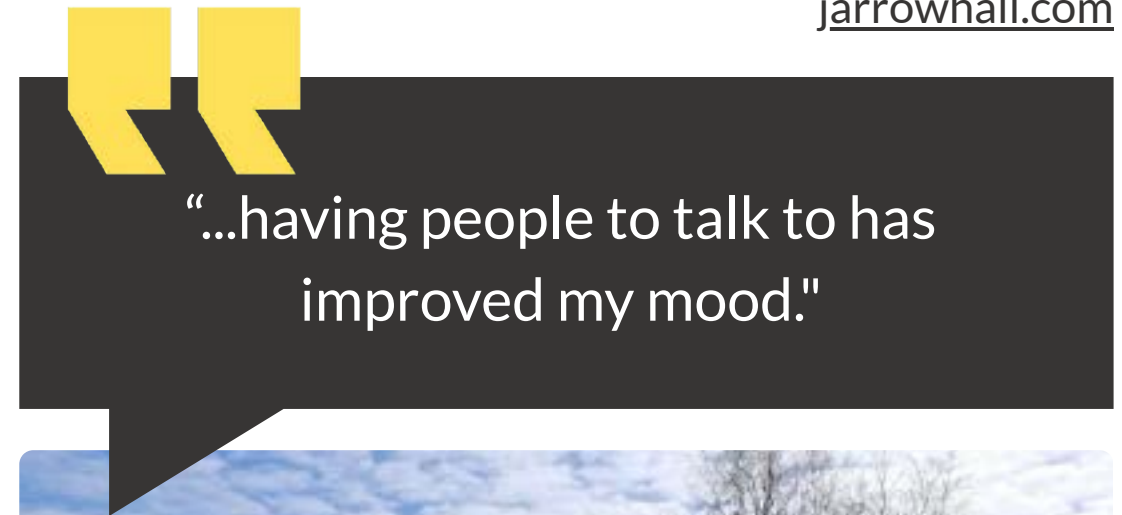
46

people progressed into education / training / employment

- 93% felt they had gained vocational skills
- 85% of volunteers felt that activity at Jarrow Hall has helped to improve their confidence
- 90% felt that volunteering helped them to feel more connected to their local community and people
- 87% felt more aware and engaged with arts and culture as a result of volunteering
- 83% felt more connected to nature



*"I've finally got a social network"*



Capital improvement works saw the installation of a new learning hub, with "Hobbit House" style classroom space. Providing informal learning environment to support young people and adults back into education.



SOUTH & NORTH TYNESIDE



**GROUNDWORK**  
SOUTH & NORTH TYNESIDE

## SUSTAINABLE DEVELOPMENT GOALS

We will prioritise our work and measure our achievements based on the difference we make to the lives of people, our impact on the environment and our contribution to UN Sustainable Development Goals.

**We have identified six goals which align most closely with our work.**



**GOAL 1:** No Poverty - Helping people into work and building the resilience of those who are most vulnerable.



**GOAL 7:** Affordable and Clean Energy - Improving energy efficiency and promoting renewables.



**GOAL 8:** Decent Work and Economic Growth - Creating jobs and enterprise and helping young people into work.

**GOAL 11:** Sustainable Cities and Communities - Improving green spaces, promoting sustainable transport and improving air quality.

**GOAL 12:** Responsible Consumption and Production - Reducing waste and promoting positive environmental behaviours among communities and businesses.

**GOAL 13:** Climate Action - Promoting practical action and strengthening the resilience of communities to cope with climate-related events.





# IMPACT REPORT 2025

## GROUNDWORK SOUTH & NORTH TYNESIDE

### THANK YOU!

Working in partnership with public, private and community stakeholders, we improve, protect and enhance our local communities, partners and environment. A wholehearted thank you is extended to all the organisations and people we have worked with in 2025.

### CONTACT

Visit our website: [www.Groundwork South and North Tyneside](http://www.Groundwork South and North Tyneside)

Email: [sant.getinvolved@groundwork.org.uk](mailto:sant.getinvolved@groundwork.org.uk)

Telephone: (0191) 428 1144

Address: The Eco Centre, Windmill Way, Hebburn, Tyne & Wear, NE31 1SR



[GroundworkSTAN](#)



[Groundwork South & North Tyneside](#)

