



GROUNDWORK YORKSHIRE IMPACT REPORT 2024/25

FOREWORD

At Groundwork Yorkshire we are passionate about creating a future where every neighbourhood is vibrant and green and able to shape its own destiny, where every community is strong and no-one is held back by their background or circumstances.

We can only achieve this by working in partnership with others who want to make a difference. When we work together we can achieve so much more than we ever can as individuals and a commitment to partnership working has always been central to Groundwork.

It remains the case that many of our key partners and the communities we serve continue to face challenging financial and environmental futures. We are committed to helping meet these challenges, in part thanks to our years of experience but also due to our passion for finding innovative solutions and approaches.

This impact report highlights some of what Groundwork Yorkshire has achieved in the last year. Many of our programmes and projects have never been needed more than now and I am pleased to note that many of the partnerships highlighted are already changing and evolving positively to ensure that we continue to meet the needs and help deliver the aspirations of the communities we work with.

I am fortunate to be the Executive Director of Groundwork Yorkshire. I see every day the enthusiasm our great team brings to delivering their projects and programmes, the interest of partners as they seek solutions to the many challenges they face and the positive benefits our projects bring to communities and individuals.

On behalf of the Trustees and myself I would like to thank our great Teams, our many partners and all of those who don't just participate in our projects but enthusiastically help us to continue to Change Places and Change Lives.



A. Curtis

Adrian Curtis
Executive Director

WE'RE PASSIONATE ABOUT A FUTURE WHERE

- > Every neighbourhood is vibrant and green.
- > Every community is strong and able to shape its own destiny.
- > No-one is held back by their background or circumstances.

We help people gain **confidence** and **skills**, get into **training** and work, protect and improve **green spaces**, lead more **active** lives and overcome significant **challenges** such as poverty, isolation, low skills and poor health.



IMPROVING PEOPLE'S PROSPECTS

Increasing confidence, health and wellbeing, skills and employability of those most in need, lifting them out of poverty.

CREATING BETTER PLACES

Helping people work together to make their surroundings greener, safer and healthier; getting involved in local decision making.

PROMOTING GREENER CHOICES

Helping people, communities and businesses understand and reduce their environmental impact to fight climate change.



THE YEAR IN NUMBERS 2024-25



£2,884,445

in grants distributed to over 350 community organisations.



430

People supported into education, employment or training



466

Days of volunteering, valued at £45,137



979,067m²

Landscape restored = 137 football pitches.



3,006

Actions to improve biodiversity or nature-based solutions



190

Projects delivered, bringing benefits to the people of Yorkshire



7,047

People reported positive health or wellbeing outcomes



8,422

Tonnes of CO2 saved including over 8,000 tonnes from domestic properties



£2,721,996

Domestic utility bill savings



GREEN DOCTOR

Groundwork's Green Doctors help Yorkshire residents **stay warm, stay well**, and **save money** on household bills and benefit the environment through Carbon savings.

ESOL Events: Damp, mould and condensation

We attended 580 events across all Yorkshire regions, focusing on educating and advising people on damp, mould and condensation.

From April 2024 - April 2025 out of 5400 homes visited across Yorkshire, 1,296 had some form of DMC issue (24%)

- + 752 Social housing**
- + 289 Private rent**
- + 255 Private owned**
- + 856 Condensation**
- + 284 Condensation & penetrating**
- + 120 Rising**
- + 36 Rising & penetrating**

Subud Centre, Sheffield

Participant: Mrs. K (Pre-Entry English Learner)

Mrs. K attended an ESOL session at the Subud Centre in Sheffield. She is from a South Asian background, lives with her husband and children, and speaks very limited English. Due to her language barrier and low confidence, Mrs. K rarely attends community events and often relies on her teenage daughter to interpret for her when accessing services or dealing with household matters.

During the session, Mrs. K listened carefully while our Green Doctor used simple English, visual prompt and pictures to explain the services offered through home visits and wider Bright Futures programme. Although she was unable to complete the referral form herself, she took a leaflet home with the contact number highlighted to share with her daughter.

Mrs. K commented that she found the session "warm and welcoming," and said it was the first time she had ever felt confident enough to ask questions in front of others. She expressed that learning about local support available in simple, clear language gave her reassurance that help is available for families like hers.

Her engagement highlights the importance of informal, visual and non-judgmental communication in supporting socially isolated women who may otherwise remain unseen by mainstream services.

"Before, I was scared to join groups. You made it easy for me. I will tell my daughter we must do this visit. I feel happy that I can now understand some of this by myself."


RETROFIT



How to get a warmer, more comfortable and energy efficient home

As part of the Green Doctor service, we provide retrofit services and energy efficiency reports for domestic dwellings and community buildings. In 2024/25 we saw some significant changes to the service as it continues to build.

 632 domestic assessments

 150 properties with modelling and coordination

 12 GEMS (non domestic reports)

There's Something in the Air

As part of the Green Doctor service, we provide a comprehensive programme of Indoor Air Quality education, project is funded by the Royal Society of Chemistry.



 74 people attended training sessions and GD training

 2,500 booklets handed out on GD home visits, events and networking

 30 People reached through the small-scale study in households

- Staff delivering PAS2035 projects & able to pay retrofit work
- Retrofit Coordinator, Retrofit Assessor & Retrofit Advisor services
- Air tightness testing service in operation
- Trusted PAS technical resource for our regions councils
- Continued delivery partner of Michael Dysons Associates
- Greener Homes Retrofit advice delivery
- Low carbon technologies advice delivery for Northern Powergrid
- Continuation of GEMS service delivering both funded and able to pay reports for non domestic spaces
- Growing trusted installer network for installation of measures
- Large long term project wins such as the West Yorkshire Combined Authority Home Energy West Yorkshire project

**PAS2035 is the government standard for retrofit, so any funded work has to follow this process*

***HUG is home upgrade grant, insulation, heat pumps and solar panels*

PLACES

Groundwork Yorkshire's qualified **Landscape Architects** are passionate about creating better spaces and have a unique set of skills to bring together **community engagement and quality design**. Staffed by Chartered Landscape Architects, the team is dedicated to delivering imaginative and innovative design solutions to meet clients' needs.



194

projects delivered



922

Days of volunteering



202

Actions to improve biodiversity



632 Ha

of land Improved

KING GEORGE GARDENS

Groundwork Landscape Architects and Pride teams have been working with community groups in Seacroft and Leeds City Council to bring a neglected and unused space back to life.

Designs began in February 2023. We shared ideas with community group representatives and drew up draft designs. The aim was to create a garden that could be used for community events, whilst being a tranquil place where the community could take time out and connect with nature.

The design and build included a lawn for play and events, attractive new boundary fencing, a new accessible ramped entrance, planting of grasses, evergreens and perennials to improve biodiversity, new accessible footpaths, benches and a food growing area with access steps. Successional bulb planting will take place in autumn and an artist is currently being selected to paint a mural with the existing pavilion. This unused space has been given a new lease of life.



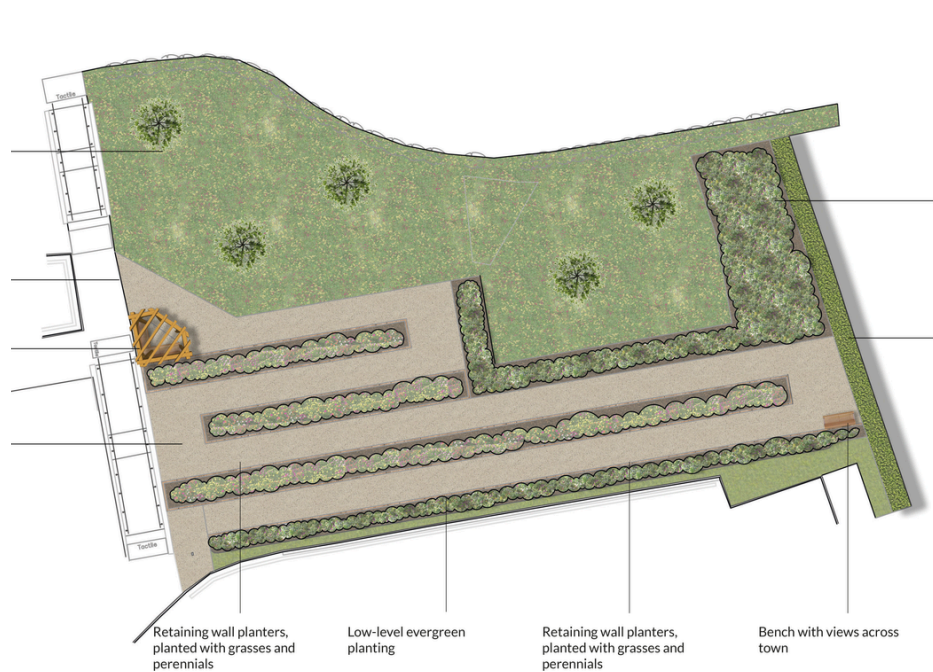
PLACES

WHITBY COMMUNITY HOSPITAL

The team were commissioned by the NHS to install a brand new, accessible garden at Whitby Community Hospital. The site was quite tricky due to being on a very steep slope, but the design overcame this using a retaining wall and other stabilising methods.

The garden has a new footpath, which can be accessed by wheelchairs and pushchairs, three new benches and litter bins, creating a place where people can sit and relax and enjoy the beautiful views over the bay and across the harbour to the historic Whitby Abbey.

There is new edible planting, including herbs and trees and the raised planters are accessible, enabling the local community to form a gardening group, who will take responsibility for organising additional planting.



PLACES

DYNAMIC DRAINS

Groundwork Hull's Dynamic Drains project have been working for the past four years in partnership with Hull City Council, Yorkshire Wildlife Trust and Environment Agency. The project aims to increase biodiversity, improve the water quality, engage the local community in nature and collective action to address issues such as littering and fly tipping impacting on Hull's historic water courses. In 2024-25 the project has expanded to encompass Holderness Drain in the East of the city as well as Barmston in the West.

- ✓ New informative signage was installed along the length of the drain, spanning over **524,164m²**, providing details about the local environment, wildlife and heritage.
- ✓ Installation of new dipping platform at Endyke Road on Barmston Drain, improving **10,029m²** of land.
- ✓ Cleared the water at the Holderness Drain, removing large debris to improve the flow of water and habitat.

Green Recovery Challenge Fund



The National Lottery Heritage Fund



Groundwork Yorkshire
Impact Report 2024/25

GOLF

Groundwork Golf is a wholly owned trading subsidiary of Groundwork Yorkshire. It comprises two operational golf courses – **Whitwood Golf Course**, a 9-hole golf and footgolf course in Wakefield; and **Springhead Park Golf Course**, an 18-hole golf course and coffee shop in west Hull.

Both courses have a club membership, but also provide a pay and play offer, helping to make golf available to the wider community.

- ✓ **472** members across the two clubs
- ✓ Over **16,852** pay and play rounds
- ✓ Over **2,160** footgolf rounds

GROUNDWORK
GOLF



Whitwood
golf club



PLACES

FRYSTON, FRICKLEY AND RABBIT INGS

Our Countryside Rangers manage over 200ha of ex-colliery sites, now country parks owned by the Land Trust. The Land Trust require their managing partners to focus on five key performance indicators: community, economy, education, environment and health, to direct management and use of the sites. With these in mind the rangers work to enhance the environment, maintaining a home for wildlife as well as a welcoming place for visitors.

They engage the community through volunteering days, seasonal events and provide outdoor learning opportunities. They also support other groups using the parks including a weekly park run, football matches, friends of groups, Scouts, Sea Cadets and other charity organisations.



- ✓ 3,230 hours of volunteer time
- ✓ 9 education events, engaging 184 local children
- ✓ An improved outdoor classroom space at Fryston Community Centre
- ✓ Over 8 different habitat types managed including woodland, lowland heathland and ponds
- ✓ 30 seasonal events with 425 participants
- ✓ 3 new and expanded wetland scrapes at Frickley Country Park
- ✓ 2,951 butterflies recorded of 22 different species across two of the sites
- ✓ 27 new homes for nature installed, including bird boxes, bug hotels and bat boxes
- ✓ SSSI wetland habitat improved to support Water Vole and Willow Tit populations

PLACES

GROUNDWORK PRIDE LIMITED (GPL)

GPL is our landscape contracting subsidiary specialising in delivering minor civil, soft and hard landscaping contracts throughout Yorkshire including maintenance, invasive species treatment and landscape creation. GPL predominantly work with major housing developers, local authorities and other public bodies.

- ✓ 34 projects completed, worth over £880,000
- ✓ Worked on 600 plots on 40 housing development sites



Creating a Better Place at Cockburn High School

The Cockburn Public Rights of Way project, delivered by Groundwork Yorkshire on behalf of Leeds City Council and Cockburn High School, provides a powerful example of how strategic planning can overcome resource constraints.

The project focused on a key footpath running across a former golf course from Gipsy Lane. This path is a vital artery used daily by the local community for various activities, including use as a bridleway, cycling, dog walking, and simply enjoying the open space, while also linking surrounding communities.

The need was clear: transform an unreliable, potentially muddy path into a safe, all-weather route that would integrate seamlessly with new campus developments, such as improved sports facilities.

We work with housing developers to create safe, secure and vibrant new neighbourhoods for the residents and local community. GPL ensure the homes and public open, green spaces are completed to the highest landscaping quality possible. Whether we are constructing a private dwelling or a larger residential development, every residential build benefits from a well-planned, attractive external surrounding.



COMMUNITIES



WEST YORKSHIRE

Go Wild Leeds ran two programmes in Morley North and Morley South across Easter, Summer and Christmas school holidays. The programme was funded by HAF via Leeds Community Foundation. Sessions focus on cooking with the children who learn new skills and work together to help prepare the meals which they then eat.

✓ 48 sessions run

✓ 809 children attended

Go Wild Wakefield, new for summer 2024, ran in two locations; South Kirkby and Fryston Country Park. Children took part in a range of nature based activities and got to visit the Yorkshire Dales National Park.

✓ 16 sessions run

✓ 104 children attended



EAST RIDING OF YORKSHIRE

Go Wild Goole ran throughout August 2024 at West Park, Goole. It offered a fun but structured educational programme to children aged 7-11 focusing on nature. The scheme was funded primarily by Innergy, Goole Fields Wind Farm. We offered a small number of HAF places in 2024.

✓ 20 sessions delivered across 4 weeks of summer



COMMUNITIES

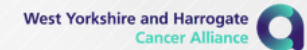
IN THIS TOGETHER - WAKEFIELD

In This Together is a new project commissioned by Wakefield Public Health and will commence in April 2025. The project aims to address health inequalities by supporting marginalised and underserved communities to access cervical screening and make informed decisions about their health.

We will increase awareness, confidence and uptake of cervical screening, breaking down barriers to access healthcare. We will deliver a targeted outreach, education sessions and practical one-to-one support. We will work in partnership with community organisations and trusted services to promote cervical screening in a culturally sensitive, trauma-informed and accessible way. Through this approach, the project seeks to empower individuals with knowledge, reduce fear and misinformation, and contribute to earlier detection and improved health outcomes across the region.

IN THIS TOGETHER
Cervical screening confidence

- ✓ Supporting at least 90 people to have a cervical screening
- ✓ Helping those who are homeless, survivors of domestic abuse, migrants, refugees, LGBTQIA+, affected by alcohol and drug misuse, sex workers, and Gypsy, Roma and Traveller communities



COOKING ON A BUDGET

Sovereign Healthcare funding enabled us to deliver our **Cooking on a Budget** programme in two Bradford primary schools. Sessions were open to children and their grown up helpers, cooking a range of vegetarian, nutritious meals which were taken home. All participants received a recipe book and learned about budgeting, meal planning and built confidence and skills.

✓ 9 sessions

✓ 251 participants



COMMUNITIES

BLUE INFLUENCERS

The Blue Influencers Scheme is a ground-breaking project from The Ernest Cook Trust and the #iwill fund (a joint investment from The National Lottery Community Fund and the Department for Culture, Media and Sport) to support young people to access high quality social action opportunities.

This year the programme entered year two, supporting young people to take social action to develop their local blue spaces. Across the year we've worked with a range of groups including **The Wildlife Zen Den**, which is transforming a derelict pond at Heeley City Farm into a tranquil space for reflection and native wildlife, **Into the Blue** who are empowering young people to procure resources (cameras, water testing kits etc.) and create training materials to be shared across Sheffield youth services, fostering environmental stewardship and essential green skills.

Blue Badgers from Rotherham Opportunities College co-designed a range of accessible and interactive features at Ulley Reservoir. These included an accessible viewing hide, a sensory bench suitable for wheelchair users, a bird hide and sensory planting beds.



COMMUNITIES

OUTDOOR WOODLAND LEARNING

A series of free nature-based sessions were delivered to families across summer and autumn half term holidays at both **Fryston and Frickley Country Parks**. The sessions attracted a mix of families some new to the parks, others local and regular visitors. Families took part in den building, pond dipping, tree identification, bug hunting.

✓ 28 sessions

✓ 125 participants



ARDSLEY WELLNESS WALKS

Thanks to funding from Leeds City Council's Outer South Community Committee, we continued last year's work delivering another year of monthly walks around Ardsley reservoir. This year each month had a theme and quiz to match. The walks were popular with participants of two and four legs!



COMMUNITIES

CORPORATE SOCIAL RESPONSIBILITY (CSR)

We support organisations with their CSR, offering tailor made packages to help make a positive impact on communities. We help site hosts, organisations and volunteers every step of the way with a wide variety of sites to choose from, all year round.

✓ 8 CSR days ran

✓ 118 volunteers



HOUSEHOLD SUPPORT FUND

As part of our role as Outer South Leeds Community Anchor, we distributed £29,000 of Household Support Funding. Seven local organisations received funding which collectively benefitted:



1,711

households across three Outer South wards

1,442

households with children



937

awards of food support provided



COMMUNITIES

GREEN COMMUNITY HUBS (NORTHERN NETWORK)

Building on last year's pilot and thanks to three years funding from the National Lottery we created and developed two Green Hubs; Lady Pitt Lane in Leeds and Spires in Sheffield.

Both hubs created steering groups of local stakeholders who helped shape the work of the hub and activities available. Across the year, participants have taken part in a wide range of activities including installation of water butts, an apple pressing day, installation of five ways of wellbeing, bioblitz and tree grafting. New hubs will be developed in the coming year.



PROUD TO BE PART OF

**NORTHERN
NETWORK**



COMMUNITIES

ABOUT

GREEN DOCTOR

PLACES

COMMUNITIES

PEOPLE

WINTER SUPPORT AND COMMUNITY FREEZER

As part of our Winter Support project, warm spaces were delivered at The Shed and Springhead Park Golf Club between January 2025 and March 2025.

Through the Groundwork Community Freezer, located at Springhead Park Golf Club in Hull, we provided a range of nutritious readily made meals for Hull residents facing economic challenges at an affordable cost. This resource was open to all residents, from working families to older people on fixed incomes.

We delivered three Energy Advice and Debt Support roadshows across Hull. We offered residents free debt advice and support, along with the option to book a free home assessment for those needing help with cold or damp homes.

- ✓ 891 meals distributed
- ✓ 322 people accessed the Community Freezer
- ✓ 975 loaves of bread donated by Jackson's Bakery to distribute for free
- ✓ 60 Household Support Fund referrals made for a £90 support grant for individuals and families struggling with cost-of-living
- ✓ 288 households supported



COMMUNITY REPAINT

We are continued to contribute to the circular economy and promote sustainability through the Community Repaint Scheme, based at The Shed in Hull. Working with local businesses and households we divert viable, high quality paint from landfill. The paint is then processed and sold at just £2 per litre to individuals, community groups, schools and anyone who wants to decorate more sustainably and affordably. [Read about the Community Repaint Scheme and why it's beneficial for the environment.](#)

- ✓ Over 1,734 litres of paint donated
- ✓ 696 people purchased paint
- ✓ 18 schools and businesses supported

COMMUNITIES

THE SHED

The Shed is an inclusive creative community hub in the heart of the Hesse Road Community of Hull, with a focus on re-purposing and reuse.

Our supportive environment helps people build confidence, develop skills, and improve their overall wellbeing at their own pace. We provide:

- > a dedicated workshop for woodworking and up-cycling
- > a sewing room and paper crafts area, where people can learn skills including sewing, quilting, crochet and card making

At The Shed we have been working closely with Levels, a small charity that will help support the long-term sustainability of The Shed, as it embarks on a journey to become a user led independent initiative in the future.

The DCMS Know Your Neighbourhood Fund continued to support our taster sessions and Bite Size courses through year two of funding.

- ✓ 11 taster sessions were delivered, encouraging participation and creativity through activities such as paper flowers, wooden flip flops, Christmas wreaths, sewing crafts, and crochet basics.
- ✓ Three courses were delivered in woodwork, dressmaking, and upholstery, enabling participants to try new skills under the guidance of experienced tutors.



- ✓ We engaged a total of 131 participants
- ✓ Over 1,407 volunteer hours contributed

Winter crafting workshops were delivered weekly, enabling participants to create a range of winter crafts, alongside group and one-to-one crochet sessions as part of the programme.

Flipping Crafty is a new weekly session, funded by Beyondly, enabling participants to develop skills in upcycling items that would otherwise have gone to landfill. Participants worked on their projects over a three-week period, creating items such as a bird box, bird feeder, wooden fox, and domino track.

Wednesday Shedders provides a weekly drop-in session focused on woodwork and upcycling, open to all ages and abilities.

Ladies that Lunch, held every Thursday, is our women only drop-in session that gives participants the opportunity to enjoy sewing, crochet, and other soft craft activities.

PEOPLE

GROUNDWORK LEARNING CENTRE

Our Learning Centre in Morley has delivered classes in digital skills, developing confidence, wellbeing, art and crafts, family history, green skills, family learning and employability. This is in addition to new holiday workshops and grant funded projects on employment support, numeracy and household budgets.

- ✓ Over 300 sessions delivered
- ✓ Over 100 adults attending per week



Read Shelley's Story.



PEOPLE

ALTERNATIVE CURRICULUM

During the academic year we ran a targeted programme of education and training for young people in Year 9/10. We worked at secondary schools across North Yorkshire and East Riding on local green space or within the school grounds.

The young people joining our programme struggled with formal education for a variety of reasons and are at risk of leaving school with few or even no qualifications. For them the alternative curriculum programme is an alternative to being in the classroom. The students get on well with our tutor, Steve, who empathises with the group and they enjoy their time with him and the opportunity to work outdoors. The young people undertake a range of work experience within horticulture, achieving a NOCN Level 1 Horticulture Certificate.

The schools that we work with on this programme have given some really pleasing feedback, reporting an improvement in behaviour, attendance and confidence among the young people concerned.

✓ 36 young people registered

✓ 27 achieved NOCN Level 1



Groundwork Yorkshire
Impact Report 2024/25



SUPPORTED INTERNSHIP

We have continued to deliver our Supported Internship programme to young people with an Education, Health and Care (EHC) plan referred from North Yorkshire Council.

The programme runs for 12 months during term time. Interns spend time undertaking work experience with our tutors working on a range of sites across the region. The Interns gain hands on skills in soft and hard landscaping, as well as a range of soft skills. One day a week is spent with our functional skills tutor focussing on maths, english and employability.

Our Supported Internships achieve NOCN Level 1 in Horticulture as well as maths, english, employability and any other qualifications we delivered as part of our employment programme (ie, LANTRA Brushcutter). **In 2024 we had 1 intern on placement.**



Funded by








THANK YOU!

Working in partnership with public, private and community stakeholders, we improve, protect and enhance our local communities, partners and environment. A wholehearted THANK YOU is extended to all the organisations and people we have worked with in 2023/24.

IMPACT REPORT 2024/25 GROUNDWORK YORKSHIRE

Visit: www.groundwork.org.uk/yorkshire
Email: leeds@groundwork.org.uk
Telephone: 0300 3033 292

-  @GroundworkYorks
-  @GroundworkYorkshire
-  @Groundwork In The North
-  @groundworkyorkshire
-  @Groundwork Yorkshire



Groundwork Yorkshire is a company limited by guarantee and registered in England.
Company Registration Number: 2202681 Charity Registration No: 519846

Published April 2026

ABOUT

GREEN DOCTOR

PLACES

COMMUNITIES

PEOPLE