



London Communities
Emergencies Partnership



LONDON RESILIENCE

A stylized graphic of a city skyline with five buildings of varying heights, each topped with a colored circle (pink, black, light blue, orange, and green).

LONDON RESILIENT COMMUNITIES



Welcome

Feel free to introduce yourself
in the chat



House Keeping



Presentations will be recorded and uploaded on our youtube channel



Q&A will be held at the end of the session



Please turn camera and microphone off and ask questions in the chat



London Communities Emergencies Partnership



A Network of Networks for the voluntary and community sector (VCS)

jointly run by two networks



London network+



VCS Emergencies
Partnership

Resilience/ Emergencies network



LONDON RESILIENCE



Protection
Approaches

London Business
Network for Resilience



With about 200 organisational partners and counting...

LCEP exists to...

**Build trusted
relationships**

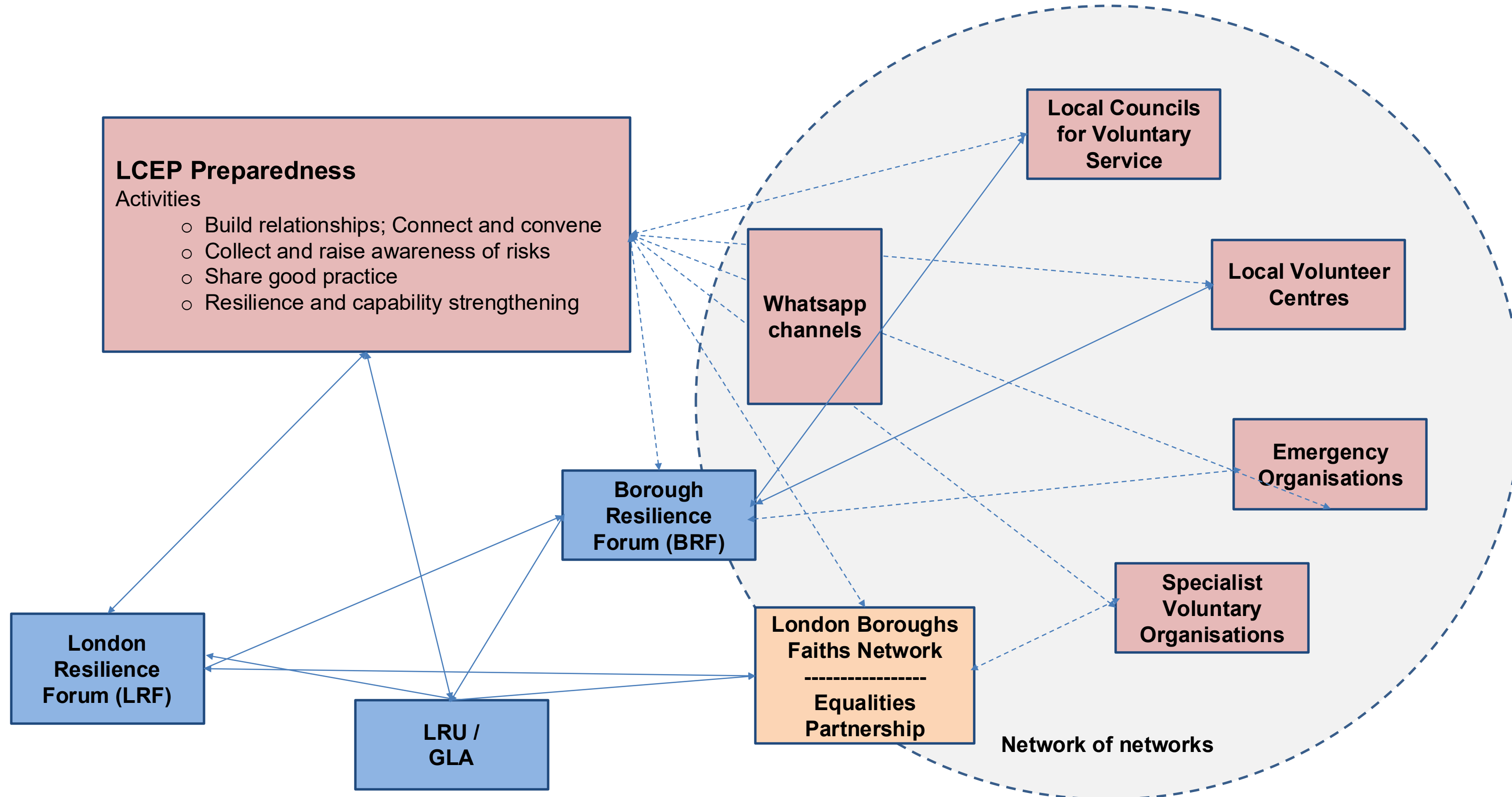
**Share knowledge and
insight**

**Strengthen
preparedness**

in order to support VCS to
prepare for, respond to, and recover from emergencies

More information: <https://londonplus.org/lcep/>

VCFS network in Preparedness Phase

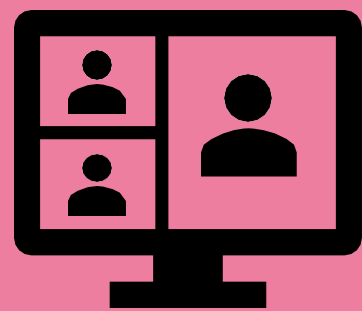


LONDON RESILIENT COMMUNITIES PROGRAMME

London's diverse communities more resilient in the face of emergencies, through development of community emergency plans and establishment of community resilience hubs



LONDON RESILIENT COMMUNITIES PROGRAMME



Free monthly webinars
Jan-Aug 2026



Free online resources



Sign up to the programme!

<http://www.groundwork.org.uk/london-resilient-communities/>

Webinar series

January 29th: Prepare - Understanding the London Resilience Context

February 26th: Prepare - Identifying local strengths to build a strong foundation for resilience

March 26th: Prepare & Respond - Using a Community Emergency Plans

April 30th: Learn - International practice: lessons from around the world

May 28th: Respond - Community Resilience Hub 101

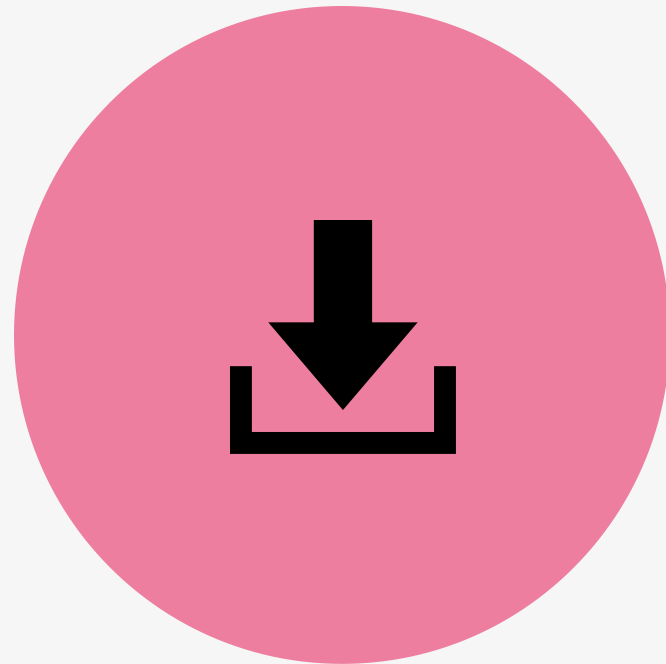
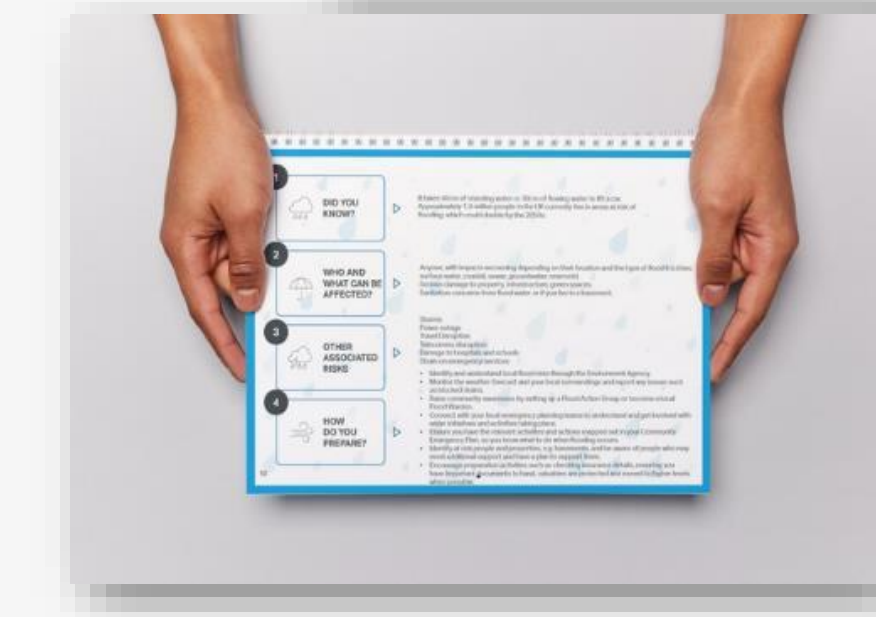
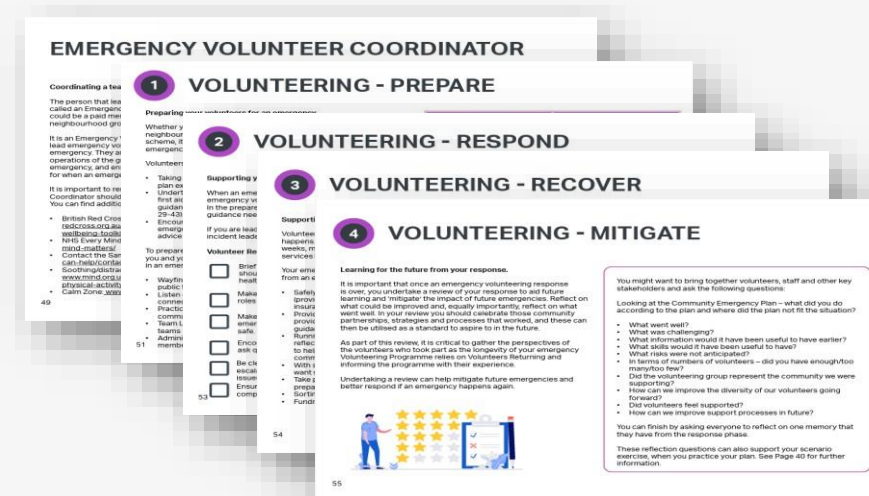
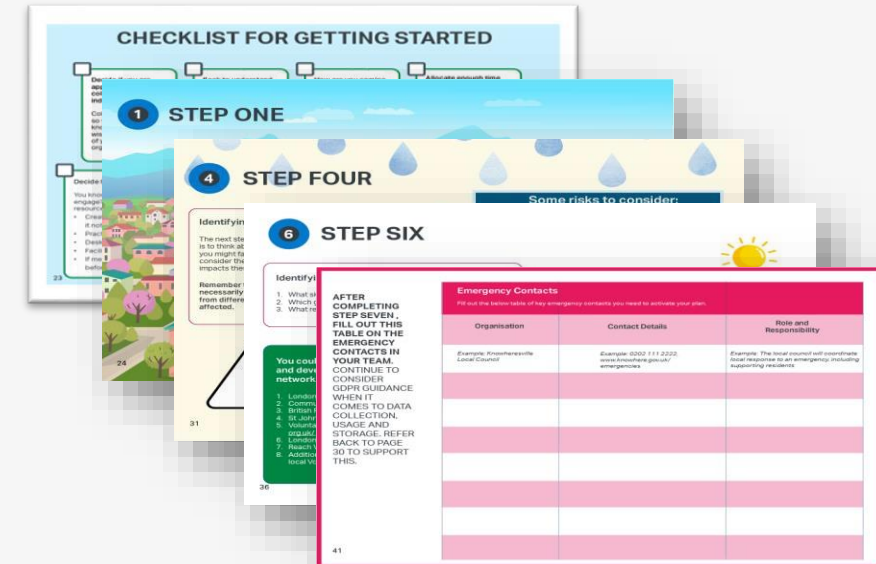
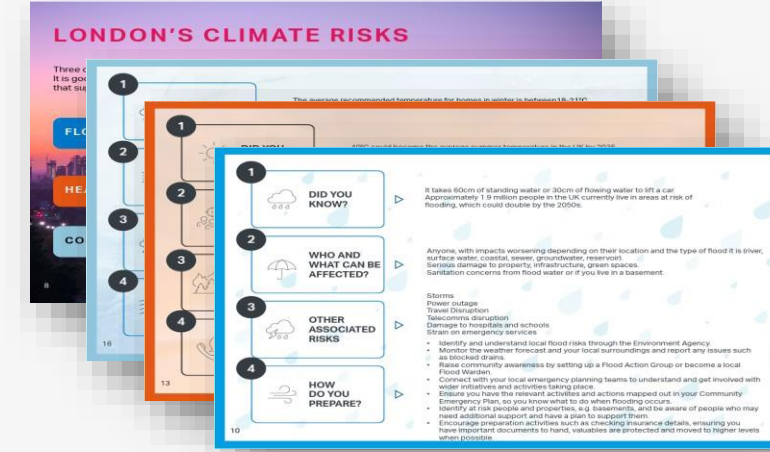
June 25th: Respond - Strategies to tackle a range of climate-related emergencies

July 30th: Learn - Introduction to Community scenario exercising

August 27th: Learn - International practice: lessons from around the world



London Community Resilience Toolkit



Download your free copy

<https://www.communitiesprepared.org.uk/london-community-resilience-toolkit/>



London Communities
Emergencies Partnership



LONDON RESILIENCE



Prepare & Respond: Using a Community Emergency Plan



Learning Outcomes

- Give a step-by-step approach to developing a Community Emergency Plan
- Give you confidence that communities have a role to play in Emergency preparedness
- Provide examples to illustrate the roles of Community Emergency Plans



Webinar overview



**What is a
Community
Emergency Plan?**



**9 practical steps to
developing a
Community
Emergency Plan**



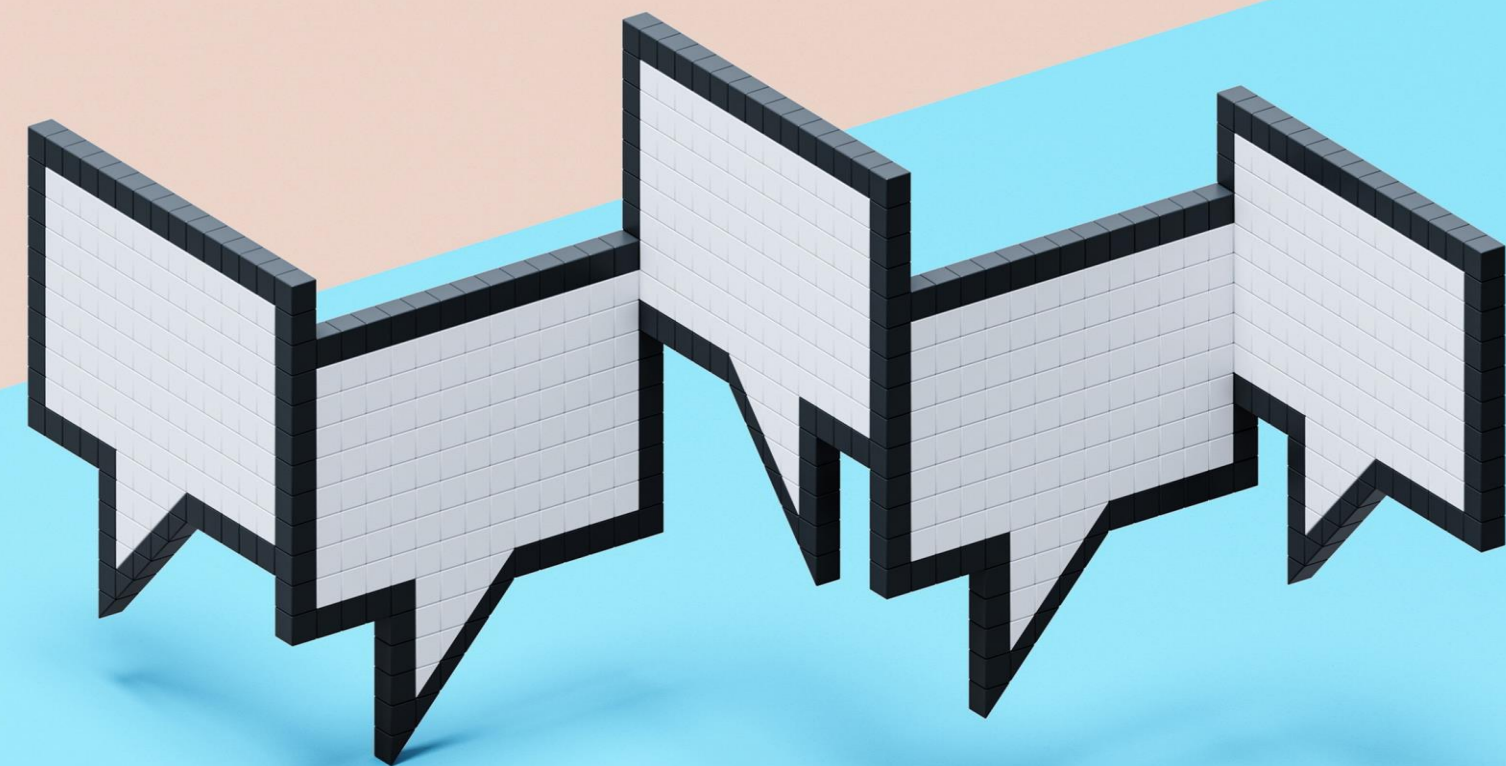
**Examples of
Community
Emergency
Plans**



What is a Community Emergency Plan?



What is a Community
Emergency Plan?
Have you had experience
with them in the past?



What is community emergency planning?

Locally
developed

Key risks

Local resources,
skills and
contacts

Roles and
responsibilities

Communications
plans

Practical actions

Complements
wider emergency
response

Co-produced

Living document

Who has emergency plans?

Communities

Government

Emergency services

Homes

Businesses



9 practical steps to developing a Community Emergency Plan



Steps to a Community Emergency Plan

Phase one: Mapping your Community

- Step 1: Define your community
- Step 2: Identify your community's strengths and challenges
- Step 3: Determine your community's resources

Phase two: Developing your plan

- Step 4: Identify the risks in your community
- Step 5: Map skills and capabilities in your community
- Step 6: Identify gaps in skills and training opportunities

Phase three: Putting your plan into action

- Step 7: Activate/Trigger your plan
- Step 8: Test your plan
- Step 9: Revisit, revise, repeat...



Phase one: Mapping your Community

- Step 1: Define your community
- Step 2: Identify your community's strengths and challenges
- Step 3: Determine your community's resources

Step 1

Define your community

Where?

Who?

How does your community engage?

How will you think about inclusivity?

Wider communities?

Who can help?

Who is the lead person?

What networks/relationships exist?

What relationships do you need to create?



Step 2

Strength and challenges

Having said that...









**Strengths-based
approach**

Identifying potential challenges is important

- Vulnerable areas
- Key infrastructure, access roads
- Vulnerable people

Step 3

Determine your community's resources

-  Communications
-  Volunteer services
-  Tools, Equipment, Supplies
-  Facilities/spaces
-  Green spaces
-  Transportation













Phase two: Developing your plan

- Step 4: Identify the risks in your community
- Step 5: Map skills and capabilities in your community
- Step 6: Identify gaps in skills and training opportunities

Step 4

Identify main risks your community is concerned about

- Think about the types of challenges and emergencies
- What impacts these could have on people?
- Plan on what risks are a priority in your community?
- Starting small at first to build your plan in the future is ok
- Consult your community about their concerns
- Think about inclusivity (who is affected how?)
- Consult official documents: Local Risk Register/National Risk register

Some risks to consider:		
 <p>Ice, Snow, Cold Weather</p>	 <p>Heatwaves</p>	 <p>Fires</p>
 <p>Drought</p>	 <p>Storms</p>	 <p>Poor Air Quality and Pollution</p>
 <p>Flooding</p>	 <p>Infectious Disease Outbreaks</p>	 <p>Overseas Emergencies</p>
 <p>Power Supply Disruptions</p>	 <p>Water Supply Disruptions</p>	 <p>Terrorism</p>

Guidance from the government:

<https://www.gov.uk/guidance/preparation-and-planning-for-emergencies-responsibilities-of-responder-agencies-and-others#the-civil-contingencies-act>

Step 5

Map skills and capabilities

- Map all skills and resources available in your community
- Skills audit: Survey volunteers and staff in your community, faith or neighbourhood group to find out what key skills could be useful in an emergency.
- For more guidance on how to recruit volunteers: <https://reachvolunteering.org.uk/>

Important skills to consider

First Aid (including mental health)	Existing volunteer experience
Connections (with organisation such as British Red Cross, etc...)	Communication and organisation
People with knowledge on insurance matters	IT skills
People with Disclosure and Barring Services checks	Hazard specific knowledge (interest in flooding, water management, etc...)
Hazard specific experience (fire warden, flood warden, etc...)	People with good understanding of GDPR and how to use and store data

Step 6

Identify gaps and organise training if needed

Look for training offers and sign up to networks such as:

- Communities Prepared: <https://www.communitiesprepared.org.uk/>
- British Red Cross: <https://www.redcross.org.uk/>
- St John Ambulance: <https://www.sja.org.uk/course-information/online-learning/>
- London Community Emergencies Partnership: <https://londonplus.org/lcep/>
- Reach Volunteering: www.reachvolunteering.org.uk
- Additionally, check out your local council or Borough Resilience Forum or any local Volunteer Centre for opportunities

Phase
three:

Putting
your plan
into action

- Step 7: Activate/Trigger your plan
- Step 8: Test your plan
- Step 9: Revisit, revise, repeat...

Step 7

Activate/Trigger your plan

Importance of triggers

- Definition: pre-defined conditions, events, or thresholds that signal when your community should activate parts, or all, of its emergency plan.
- Purpose: ensure a timely and coordinated response, preventing delays or confusion during an incident.
- Provide clarity and confidence, avoid overreaction or underreaction

Step 8

Test your plan

Why should you exercise your plan?

It help people understand how the plan will work.

It helps people not to forget

You can learn what works, what could be improved.

It brings your community together

It builds trust between partners, confidence the plan and competency

Why not asking partner agencies to join in and help (EA, LA, Fire and Rescue Service)?



Step 9

Review, repeat...

When to review your plan?

Every time it is exercised

Every time it is used

Every 6-12

Every time things change (risks, legislation, building development in your area, the set of skills in your community)

IT'S A CYCLE!

What to consider when you review?

What went well?

What can be even better, and how?

Who else needed to be involved?

Did the people know what to do?

Did the training work?

Were all the resources you needed available?

Did the resources work properly?

Was the plan user-friendly? Need simplifying?

**First iteration of
your plan
complete!
Congratulations!**



Examples of Community Emergency Plans



Devon Communities Together

<https://www.devoncommunities.org.uk/emergency-plan-examples>

Learnings:

- Local knowledge is key
- Focus on the first few hours
- Strong coordination matters
- Communication & contacts are critical
- Short, action-focused plans that support (not replace) emergency services

CONTENTS

Section		Page
	Amendments and Plan Preparation	2
1.0	Introduction	4
2.0	Community Hazards	7
3.0	Mitigation Measures	12
4.0	Key Resources and Locations	16
5.0	Pre-Emergency Procedures	19
6.0	Emergency Actions	21
7.0	Flooding	25
8.0	Key Contacts	29
Annex A	Vulnerable Residents and Properties	32
Annex B	EAP Evacuee Registration Form	34
Annex C	Log Sheet	36
Annex D	Map of the Community with Key Locations	37
Annex E	Suggested Contents of CRST Grab Bag	38
Annex F	Map of Locations of ICPS, Emergency Supply Stores and Helicopter Landing Site.	39
	Notes	41
	Flood Action Checklist	42

Note for Emergency Services

NSC Parish Council has a group of **volunteer supporters** who may be able to provide assistance in an emergency.

They can be identified by their HiVis jackets marked as follows:

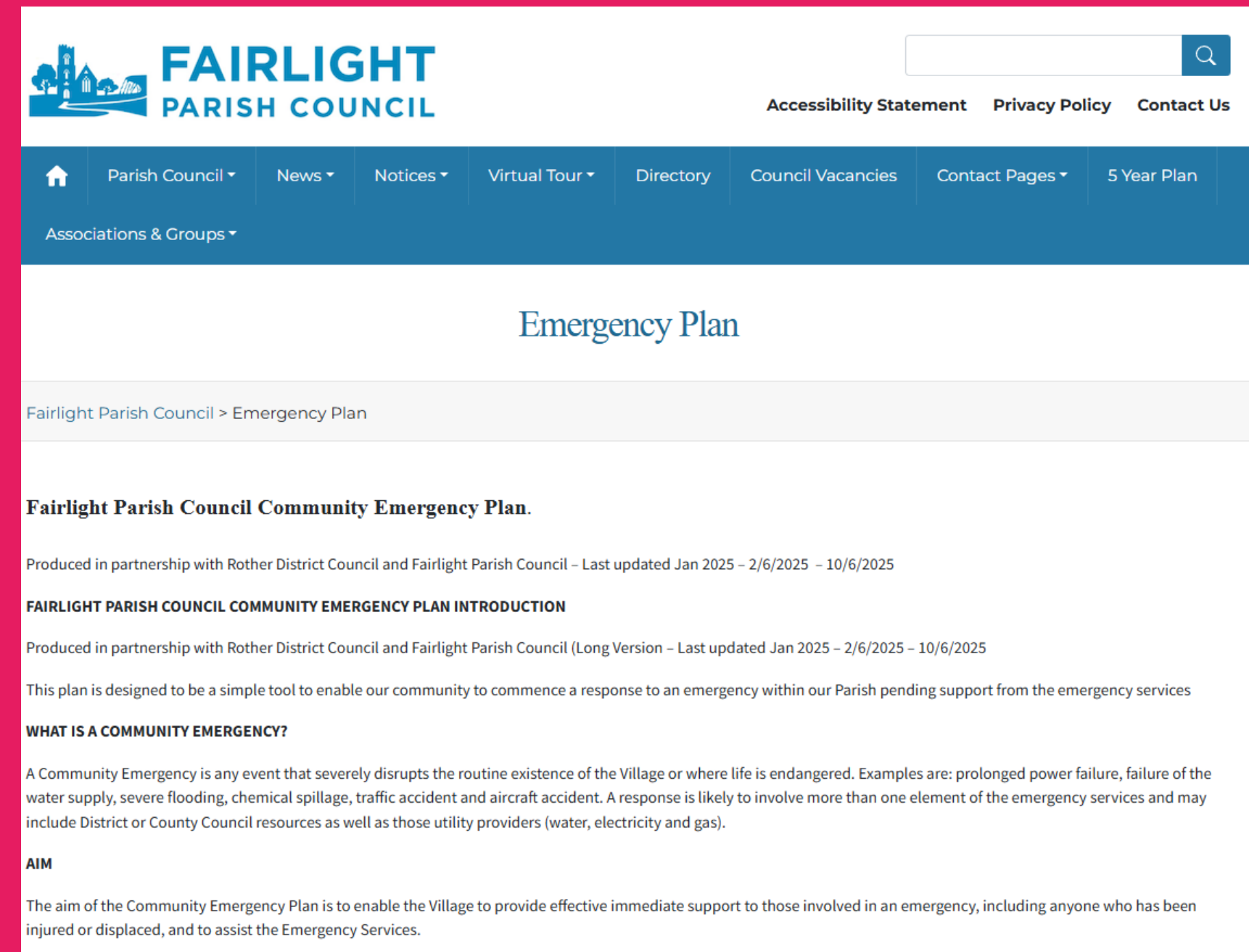


Fairlight Parish Council

<https://fairlightparishcouncil.gov.uk/emergency-plan/>

Learnings:

- Start with clear, immediate actions
- Keep roles and structure straightforward
- Make contacts and resources easy to access
- Focus on realistic community actions
- Set clear boundaries with emergency services



The screenshot shows the Fairlight Parish Council website. The header includes the council's logo, a search bar, and links for Accessibility Statement, Privacy Policy, and Contact Us. The main navigation menu contains links for Home, Parish Council, News, Notices, Virtual Tour, Directory, Council Vacancies, Contact Pages, and 5 Year Plan. The page title is "Emergency Plan". The breadcrumb trail reads "Fairlight Parish Council > Emergency Plan". The main content area begins with the heading "Fairlight Parish Council Community Emergency Plan." followed by the text "Produced in partnership with Rother District Council and Fairlight Parish Council – Last updated Jan 2025 – 2/6/2025 – 10/6/2025". Below this is the section "FAIRLIGHT PARISH COUNCIL COMMUNITY EMERGENCY PLAN INTRODUCTION" with the text "Produced in partnership with Rother District Council and Fairlight Parish Council (Long Version – Last updated Jan 2025 – 2/6/2025 – 10/6/2025)". The next section is "WHAT IS A COMMUNITY EMERGENCY?" with the text "This plan is designed to be a simple tool to enable our community to commence a response to an emergency within our Parish pending support from the emergency services". The final section is "AIM" with the text "The aim of the Community Emergency Plan is to enable the Village to provide effective immediate support to those involved in an emergency, including anyone who has been injured or displaced, and to assist the Emergency Services."

City of York Council

<https://www.york.gov.uk/downloads/download/68/community-emergency-plan>

Learnings:

- Stronger coordination with services is essential
- Clarity on roles and escalation is more important
- Communication systems are critical at scale
- Keep the same practical, action-focused core
- Adapt, don't replace, the rural approach

Community Emergency Plan

Parish/Ward/Town:

Last Review Date:

Lead Contact:



Community Emergency Plan (CEP)

Contents

i. Record of Amendments	4
ii. Distribution List	5
iii. Key Community Contacts	6
iv. Contact pyramid	7
v. Emergency Box	8
Section 1: Community Profile	9
1.1 Map of Area covered by this CEP (incl flood zones if applicable)	9
Intentionally Blank Page	Error! Bookmark not defined.
1.2 Population	10
1.3 Community Key Access Routes (including main bridges)	10
1.4 Main Rivers within the area	10
1.5 Becks within the area	10
1.6 Available Networks within the Community	10
1.7 Local Radio	11
1.8 Neighbouring Communities: Contacts	11
1.9 Methods for warning and informing Your Community	12
Section 2: Community Risks	13
2.1 Local Risks and Plan Triggers	13
2.2 Vulnerable Establishments	14
2.3 Vulnerable People (or people who may need additional assistance) ..	14
2.4 Areas Subject to Flooding (all types) (see location map)	15
2.5 Flood Alerts and Warnings (QUICK DIAL NUMBER ###)	15
Section 3: Rest/Welfare Centre	16
3.1 Rest/Welfare Centre	16
Section 4: Community Resources/Assets	17
4.1 Local resources	17
4.2 Emergency Volunteers	18
Section 5: Contact Details – Useful Organisations	19
Section 6: Incident Check Sheets	22
6.1 Community Emergency Team Agenda	23
6.2 Emergency Procedure	24
6.3 Rest/Welfare Centre Check Sheet	28
6.7 Data Protection – Consent Form	30
6.8 Post Incident Debrief form	31

Links and Resources

- <https://www.groundwork.org.uk/london/grants-london-old/london-resilient-communities/>
- <https://www.communitiesprepared.org.uk/london-community-resilience-toolkit/>
- <https://londonplus.org/lcep/>
- <https://www.ncvo.org.uk/#/>
- <https://4x4response.uk/>
- <https://www.gov.uk/guidance/preparation-and-planning-for-emergencies-responsibilities-of-responder-agencies-and-others#the-civil-contingencies-act>

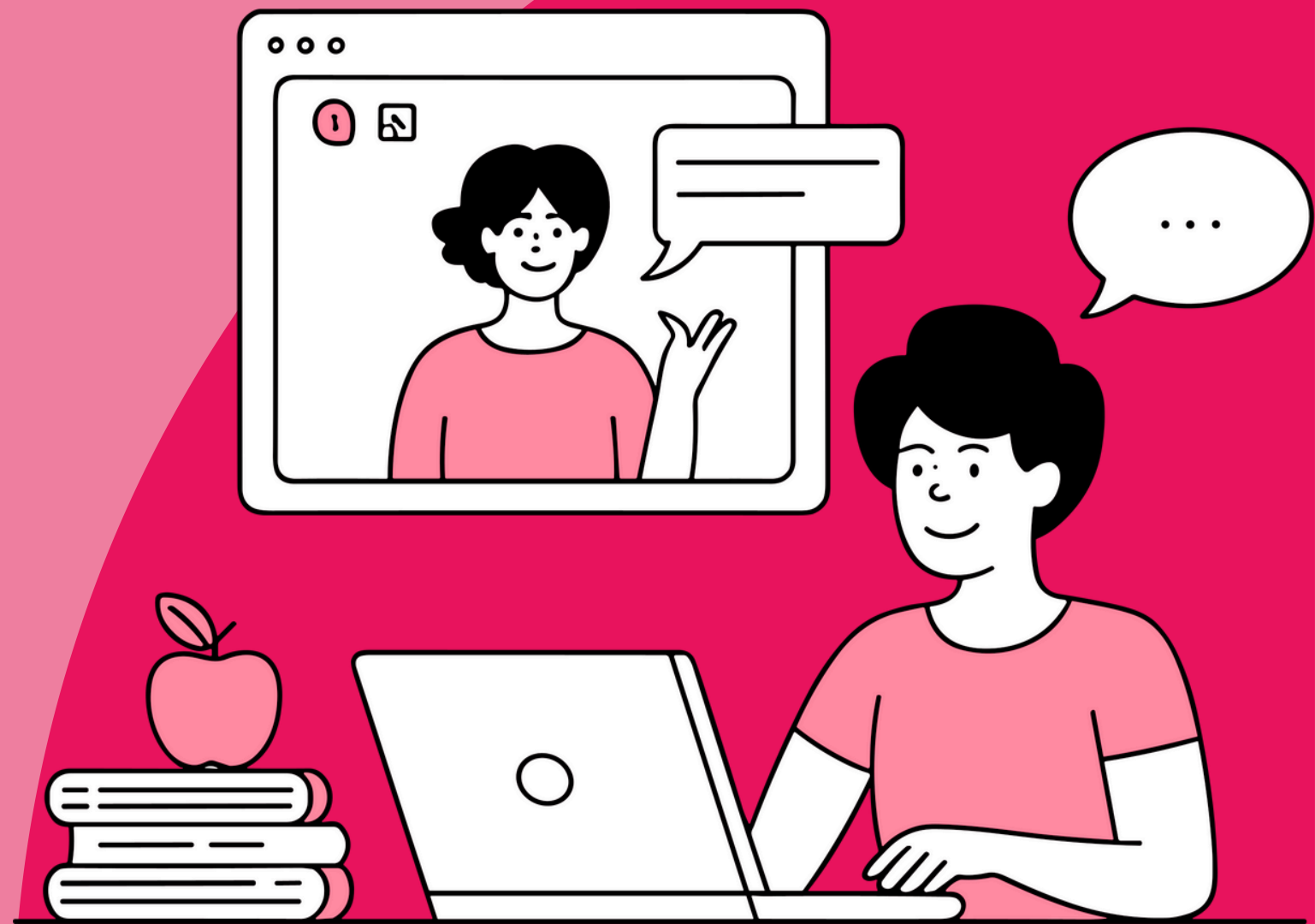


Links and Resources

- <https://www.gov.uk/guidance/preparation-and-planning-for-emergencies-responsibilities-of-responder-agencies-and-others#the-civil-contingencies-act>
- <https://www.communitiesprepared.org.uk/>
- <https://www.redcross.org.uk/>
- <https://www.sja.org.uk/course-information/online-learning/>
- <https://londonplus.org/lcep/>
- www.reachvolunteering.org.uk
- <https://www.devoncommunities.org.uk/emergency-plan-examples>
- <https://fairlightparishcouncil.gov.uk/emergency-plan/>
- <https://www.york.gov.uk/downloads/download/68/community-emergency-plan>



Questions





Next Webinar:

Learn - International practice: lessons from around the world

30/04/2026, 1PM-2PM

Registering link will be shared at

<https://us02web.zoom.us/meeting/register/FJ-g0R79Q4G7huKHSb6BqQ>



Thank you



**LONDON
RESILIENT
COMMUNITIES**