



BUPA FOUNDATION:
GREEN COMMUNITY
GRANTS PROGRAMME
IMPACT REPORT 2025/26

ABOUT



About Bupa Foundation Green Community Grants Programme

In 2025 the Bupa Foundation invested more than £500,000 in Green Community Grants, as part of Bupa's #HealthyCities initiative - where Bupa employees, suppliers and customers walked close to 1 billion steps in June to donate money for charity.

These grants of up to £2,000 exist to help local communities bring their ideas to life - making places and spaces greener, and empowering schools and charities to help their communities be healthier.



About Bupa Foundation

Bupa Foundation's purpose is to help people live longer, healthier, happier lives and make a better world. We help create healthier communities by funding practical projects that improve both people and planet health: www.bupafoundation.org



About Groundwork

Groundwork is a federation of charities with a collective mission to take practical action to create a fair and green future in which people, places, and nature thrive. We support communities and businesses to build capacity and resilience in order to tackle hardship, achieve a just transition to net-zero and help nature recover in a way that reduces inequality and leads to healthier, happier lives for all: www.groundwork.org.uk

INTRODUCTION



What has become crystal clear over the last few years is that managing and improving health is not just a job for health systems, but a responsibility on all of us. Employers, landlords, schools, local authorities – all have a part to play in creating better settings for health and for making health-creating behaviours simple, cheap and accessible.

However, cuts to local authority budgets and a seemingly perpetual cost of living crisis driven by global conflicts and climate change are putting stress on the system with direct consequences for our physical and mental health.

As so often happens at times of crisis, community organisations are stepping up to respond. Whilst their primary focus may often be elsewhere – educating young people, running a community centre, managing an allotment or supporting culture and creativity – the outcome is invariably improved wellbeing and greater resilience, leaving people better prepared to cope with the unpredictability of modern life.

I'm really pleased that, through our partnership with the Bupa Foundation, we've been able to support this work by providing grants to a fabulous array of organisations to deliver projects making a tangible difference to the way people feel and to their ability to make healthier lifestyle choices. Our Green Community Grants programme has shown that practical improvements to the environment and measurable health outcomes go hand in hand – from woodlands to wormeries, people at risk of poor health have been helped to benefit from the restorative effects of nature and the sense of wellbeing that comes from being better connected with their community.

We've always known that bringing people together to tackle the issues that matter to them on their doorstep is energising and confidence building. Given the pressures on our health system and on the services and institutions we depend on to live our lives well, the creativity and commitment shown by community organisations to plug gaps in service provision, to protect the most vulnerable, and simply to bring joy into our lives, has never been more important.

Graham Duxbury

Groundwork's UK Chief Executive

INTRODUCTION



At the Bupa Foundation, we exist to help create healthier communities - places where people and nature can thrive together.

In its third year, the Green Community Grants programme continues to unlock the power of local action to help create Healthy Cities and communities. Transforming urban spaces, supporting wellbeing, and strengthening communities through nature.

This past year has once again highlighted the creativity and dedication of local communities. From accessible outdoor learning environments to community gardens and biodiversity projects, these initiatives are making a real difference to people's health and their local urban environment.

My sincere thanks go to everyone who has helped bring these projects to life. We are proud to continue supporting this work with a further Green Community Grants fund in 2026 and to see the programme grow its positive impact on people's health and the planet's health.

Stuart Brown

Chair of the Bupa Foundation

THE STORY SO FAR

GREEN COMMUNITY GRANTS 2025

Bupa Foundation Green Community Grants is part of Bupa's Healthy Cities campaign and supports practical projects which help both people and the planet through grants of up to £2,000.

Applications for the third round went live during June 2025 and resulted in 800 applications from schools and community organisations across the UK – awarding over £500,000 to green projects for 268 schools, not-for-profits and charities.

The successful applicants included:

- 130 schools who received funding for outdoor classrooms, forest schools, sensory gardens and similar projects
- 138 community groups, charities and VCS organisations for community allotments, wellbeing gardens, nature engagement projects and green space improvements

To date, the projects have directly impacted more than 30,757 people across England, Wales, Scotland, Northern Ireland and the Republic of Ireland. On the right is a map of the projects awarded funding in 2025.



THE STORY SO FAR

2025 FUNDING BREAKDOWN



2025 Funding Breakdown		
Total projects	Total amount awarded	Including £249,174 for 130 schools or Parent Teacher Associations (PTA)
268	£507,641	Including £258,467 for 138 community groups

Regional breakdown				
239 awards in England, £453,297	13 awards in Northern Ireland, £24,750	1 award in Republic of Ireland, £2,000	8 awards in Scotland, £14,254	7 awards in Wales, £13,340

English Region Breakdown								
East	East Midlands	London	North East	North West	South East	South West	West Midlands	Yorkshire and The Humber
7	11	37	18	34	44	25	24	39

From the approved grants, 100 projects were within 10 miles of a Bupa office (located in Brighton, Bristol, Leeds, London, Salford and Staines).

THE STORY SO FAR

IMPACT

Key metrics - In 2025/26 the programme has supported*

Direct beneficiaries 30,757	Indirect beneficiaries 190,927	Activity sessions delivered 6318	Number of people taking part in activities through projects 29,443	Number of volunteers involved in projects 2,858
Number of community organisations involved in project 29,943	Number of new open spaces created 844	Number of existing open spaces improved 1969	Square metres of open spaces improved 19,535	Number of trees planted 1919

*Figures based on 197 completed projects at the time of publishing.

Direct beneficiaries: the total number of unique beneficiaries that have taken part in activity sessions

Indirect beneficiaries: the total number of unique visitors or users of the space over a 12 month period

GREEN COMMUNITY GRANTS IN ACTION

ENGLAND

Kingsmead Primary School, London

Funding: £2,000

Kingsmead Primary School received £2,000 for the restoration of an outdoor science garden which has enabled children to learn and connect with nature in all types of weather.

The majority of children attending Kingsmead Primary live on the Kingsmead Estate in Hackney, with limited gardens and green spaces. The curriculum topics taught at this school, including Science, English, Design and Technology, and Art link to the use of the school garden to increase opportunities for outdoor learning.

The project has funded the renovation of an outdoor classroom structure which was rotten and collapsed, making the space unsafe and not fit for use.

Funding was used to replace the structure with a waterproof roof and three walls to allow connection with nature while providing essential protection from the weather conditions. Durable outdoor seating and a table has enabled children to safely take part in lessons, and the addition of two planters aims to encourage pollinators and increase the garden's biodiversity.

This new shelter hosts classes for gardening sessions, forest school sessions and sessions that link classroom learning to outside activities and events, as well as learning about the environment, food sources, plant cultivation and healthy eating.

The funding has created a flexible space that can be used more widely all year round – for parent coffee mornings, wellbeing sessions, and staff development activities – helping to strengthen school community relationships and promote positive mental health through the outdoors.

Hang, Kingsmead Primary School Teacher and Sustainability Lead, said: “Through the funding, we have been able to provide a space which children can enjoy and where they can connect with nature. We plan to use this area for forest school, for staff members to enjoy their lunch and a space for pupils to regulate their feelings and become more in touch with nature.

Without the Bupa Foundation funding, we would have been unable to deliver our project. The outdoor classroom has encouraged teachers to deliver lessons outside. Children and staff members have reported that they are more open to spending time in the outdoor learning space as a result of the new outdoor shelter.”



GREEN COMMUNITY GRANTS IN ACTION

ENGLAND

Southern Hospice Group, Brighton & Hove

Funding: £2,000

Southern Hospice Group was awarded £2,000 to enhance the gardens at Martlets, a hospice in Brighton & Hove. The refurbished gardens include a green wellbeing space creating a positive atmosphere for service users, staff, and visitors at the hospice.

Following the re-build of Martlets in Hove, several areas in the gardens remained underdeveloped and sparse, lacking both visual interest and structure.

Funding from Bupa Foundation has transformed these areas into a thriving, biodiverse garden space that offers a calming and inclusive environment for patients, staff, visitors, and the wider community.

Implemented through a landscaping plan, the work introduced evergreen shrubs to provide year-round shelter for small birds and insects, and flowering plants for colour and pollinators. The funding aimed to form a peaceful and natural space for wellbeing.

Hospice gardens play a vital role in reducing stress, easing symptoms, and providing a sense of comfort and normality. This project has facilitated Martlets to continue supporting emotional, psychological, and spiritual wellbeing with vital access to the outdoors.

Hannah Seltzer, Southern Hospice Group Corporate Partnerships Manager, said: “These spaces encourage social interaction, reflection, and connection with nature, which are especially important at the end of life. Whether it’s a quiet spot to remember a loved one, a sensory garden for hands-on experiences, or simply a peaceful view, we know our hospice gardens make a real difference to patients and their families. It is thanks to this grant that we have been able to improve one of our incredible outdoor spaces.”



GREEN COMMUNITY GRANTS IN ACTION

WALES

Heol Chwarae Rol Ltd – Role Play Lane, Rhondda Cynon Taf

Funding: £2,000

Heol Chwarae Rol Ltd used £2,000 to develop a sensory wellbeing garden to support Additional Learning Needs families, students, unpaid carers, and the wider community in a calming, grounded environment.

The community organisation welcomes thousands of families through its doors each year and currently supports almost 300 families with children and young people with Additional Learning Needs. The centre also regularly hosts college students undertaking life skills placements and provides inclusive opportunities for volunteering, wellbeing, learning, and play. Many families and individuals benefit from accessible sensory spaces where they can feel grounded, safe, supported and included.

Funding transformed a small but valuable outdoor space at Heol Chwarae Rol – Role Play Lane into a sensory wellbeing garden that offers therapeutic value and opportunities for gentle, purposeful activity. Thoughtful features include scented lavender plants, wind chimes to provide soothing natural sounds, and mirrors to reflect light and visually expand the garden.

The new space offers a relaxing, nature-rich environment where individuals can rest, regulate, and explore nature. Families have been involved in creating bird feeders, planters and planting seeds that they take home with them to enhance their own spaces at home.

Joanne Baldock, Heol Chwarae Rol – Role Play Lane Managing Director, said: “The Bupa Foundation funding has helped us transform and revitalise an existing outdoor area into a thriving sensory garden that supports wellbeing, confidence and connection for local families. The impact has extended beyond our sessions, with staff also benefiting from the space as a calm area to work, reflect and take breaks, supporting their own wellbeing alongside the families they support. Most importantly, it’s a space built by the community, for the community, and one that will continue to make a difference long into the future.”



GREEN COMMUNITY GRANTS IN ACTION

ENGLAND

**Blackpool Council,
Blackpool**

Funding: £1,940

Blackpool Council was awarded £1,940 for 'Rangers Retreat', a weekly outdoor group at Marton Mere Nature Reserve supporting men's mental health through meaningful, hands-on activities.

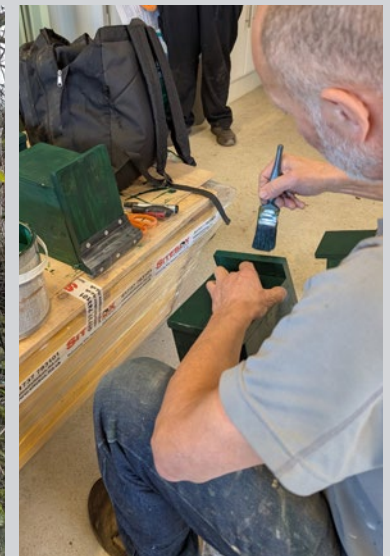
The project, which ran in response to Blackpool's high suicide rates, has created a safe, supportive space specifically for men. The weekly outdoor group delivered practical tasks such as cooking over an open fire, woodworking, and whittling – activities that appealed to male interests and fostered connection in a relaxed, non-clinical setting.

Funding enabled a trained park ranger to lead 12 weekly sessions as well as allowing the Council to purchase tools, materials, and equipment needed to deliver safe and engaging activities that built trust, reduced isolation and encouraged open conversation.

The added benefit of the project was the positive impact on the green space, including conservation and improvements such as bird box installation, habitat management, and the reinstallation of Sand Martin nesting beds which have already shown positive results for local wildlife.

'Rangers Retreat' was promoted in partnership with social prescribers and family hubs to ensure Blackpool Council reached those most in need.

Heidi Arnold, Community Engagement Officer for Blackpool Council, said: "The funding has made a significant difference to both the people involved and the environment at Marton Mere Nature Reserve. Participants reported improved wellbeing, reduced isolation, and a renewed sense of purpose, with many forming friendships and continuing to meet outside of sessions. Several have gone on to join local groups, including the Friends of Marton Mere and Fylde Bird Club. Overall, this project demonstrated how small-scale funding can have a meaningful and ongoing impact on community wellbeing and local biodiversity."



GREEN COMMUNITY GRANTS IN ACTION

NORTHERN IRELAND

Saint Joseph's Nursery School, Antrim

Funding: £2,000

Saint Joseph's Nursery School was awarded £2,000 to enhance an outdoor classroom, bringing education and wellbeing benefits to children and the wider community.

Saint Joseph's Nursery School sought funding to further develop their forest school by enhancing existing outdoor woodland areas, transforming them into more sustainable, educational, and inspiring environments for children and families.

Six curricular areas were developed outdoors, offering eco-friendly spaces that support imaginative play, problem-solving, sensory exploration, and development. This includes gravel and soil zones, reading areas, arts and craft stations, and messy play areas that allow children to experiment with natural materials like soil, cones, leaves, and twigs, as well as water-based activities such as pouring, filling, and measuring.

Enhancements made to existing space included planting herbs, fruit and vegetables, shrubs, and fruit trees, and creating a sensory garden. These features have helped children to become more environmentally aware, by learning how plants grow and understanding the environmental value of these green space additions such as improving air quality, storing carbon, and reducing flood risk.

The upgraded areas serve as a valuable resource for the wider community, supporting the many parenting courses, family play days, and volunteer programs offered throughout the year.

Anne Maguire, Saint Joseph's Nursery School Principal, said:

"The support from Bupa Foundation has been truly transformative for our nursery. This funding has allowed us to enrich our outdoor learning environment in ways that have made a remarkable difference to our children and their families. We are seeing deeper curiosity, greater confidence, and a real sense of joy as children explore the natural world. The opportunities now available simply would not have been possible without this funding, and we are incredibly grateful for the positive and lasting impact it has created."



GREEN COMMUNITY GRANTS IN ACTION

ENGLAND

St Paul's C.E. Primary School, Bradford

Funding: £1,604

St Paul's C.E. Primary School received £1,604 to transform an unused concrete space into a practical, engaging outdoor learning area to nurture pupils' connection with nature and healthy living.

Funding launched 'The Learning Patch', an innovative outdoor learning initiative addressing the importance of reconnecting children with nature, food origins, and sustainable living – particularly in urban settings with limited access to green space.

An underused paved space in the primary school became a vibrant, hands-on learning environment for pupils in Reception, Year 1, and Year 2. Essential infrastructure was purchased, including raised beds, seeds, pollinator-friendly plants and outdoor seating.

The installation of outdoor seating has permitted teachers to deliver lessons in an open-air setting, fostering collaboration, reflection, and group dialogue. Establishing raised beds and growing areas on a primarily hard-surfaced site has also demonstrated that meaningful environmental education and food growing can happen anywhere.

In the new space, pupils have engaged in planting, nurturing, and harvesting fruits, vegetables, and flowers. As well as gaining practical gardening skills, children are deepening their understanding of plant life cycles, ecology, and nutrition and are encouraged to be curious about the natural world.

'The Learning Patch' is designed to extend beyond the classroom. The school plans to offer practical workshops on food growing, cost-saving tips, and the health benefits of gardening to parents and carers alongside their children. These inclusive, intergenerational sessions aim to strengthen school-family relationships and empower families to grow their own produce at home.

Mr Helliwell-Kenny, St Paul's C.E. Primary School Head Teacher, said: "Funding has made a lasting positive difference to both our school environment and wider community. The grant has provided children with hands-on opportunities to learn about sustainability, healthy lifestyles, and the natural world in a way that simply wouldn't have been possible within a traditional classroom alone. What was once an overlooked area is now becoming a thriving growing environment that will continue to benefit children for years to come. Thank you Bupa Foundation!"



GREEN COMMUNITY GRANTS IN ACTION

ENGLAND

Thomas Ashton School, Greater Manchester

Funding: £2,000

Thomas Ashton School was granted £2,000 to create a therapeutic horticulture outdoor space, helping children with special educational needs and disabilities to connect, communicate and grow confidence through gardening.

Thomas Ashton School in Hyde, Greater Manchester is a special educational needs school for children aged 5-14. All pupils have an Education, Health and Care Plan, with some experiencing significant communication difficulties, sensory processing challenges, and disabilities. The school is based in an area of high deprivation where many families face barriers to accessing green spaces, healthy food, and wellbeing-focused activities.

Funding for 'Planting Possibilities' transformed an under used outdoor area into a vibrant and accessible garden with essential gardening materials, including sensory planting features and accessible containers. Structured horticultural therapy sessions have taken place in the outdoor space, allowing pupils to grow fruit, vegetables, herbs and sensory plants and supporting both physical and mental health.

Sessions have also featured cooking activities using the harvested produce to encourage healthy eating and sustainability. The project has increased the children's knowledge of nutrition, nature, and environmental responsibility in a fun and engaging way.

Through the Green Community Grant, this horticulture space is supporting the pupils at Thomas Ashton School to develop social, emotional and practical life skills in a calming, inclusive outdoor environment.

Lauren Jones, Teacher at Thomas Ashton School, said:

"This funding has given our children something really special – a calm, nurturing space where they can feel safe, engaged and proud of what they are creating. For many of our children, traditional environments can feel overwhelming, but gardening has offered a different way to connect and communicate. Watching them plant their first seeds and take ownership of the space has been incredibly powerful, and we know it will make a lasting difference to their wellbeing. Thank you for making this possible!"



GREEN COMMUNITY GRANTS IN ACTION

SCOTLAND

North Glasgow Community Food Initiative

Funding: £2,000

North Glasgow Community Food Initiative received £2,000 to develop an inclusive, accessible and biodiverse community allotment space whilst engaging more young people with nature.

The community-led organisation is committed to promoting food justice, environmental sustainability and community wellbeing through access to healthy, affordable food. They aim to empower local residents in the north of Glasgow, particularly those facing socio-economic challenges, food insecurity or social isolation, to grow, cook and share food while fostering stronger, greener communities.

Funding transformed a currently underused and waterlogged area into a vibrant community hub within the city for growing and gathering. The project improved green infrastructure by installing two new raised beds filled with compost, planting climate-resilient food crops, and enhancing air quality and biodiversity through the addition of fruit trees, berry bushes, and sensory planting.

A key focus was the creation of an outdoor children's garden, designed to engage young people with nature. The safe and welcoming space includes a mud kitchen, logs for natural play, and a log circle for outdoor learning. To improve access and safety, fencing and gates were installed, and woodchip paths laid.

Weekly therapeutic gardening session for local adults and youth sessions as well as holiday programme attendees and schools will be involved in looking after the new areas, ensuring the space remains active, well-used, and cared for year-round.

Leila Eddakille, North Glasgow Community Food Initiative Project Manager, said: "Thanks to Bupa Foundation, we have been able to transform and extend our community garden space for both children and adults. The improvements have made the garden more biodiverse, more accessible, and better suited for planting and growing. It has been a really rewarding process for our team of volunteers to work together on this project, and we're excited to see the space enjoyed by the wider community for many years to come. A huge thank you for making this possible!"



GREEN COMMUNITY GRANTS IN ACTION

ENGLAND

Bradford Refugee Allotment, Bradford

Funding: £1,047.59

Refugee and Asylum Seekers Allotment group received £1,047.59 to design accessible growing spaces serving as hubs of activity, pride and connection.

Located in an area of Bradford experiencing high levels of poverty, Bradford Refugee Allotment is a green space haven. Many of the participants in the allotment project have experienced limited access to private outdoor space, whether due to temporary accommodation or living in dense urban settings.

Many group participants with limited mobility have found the physical demands of ground-level gardening to be a significant barrier. Though still able to benefit somewhat from visiting the allotment, they are excluded from key activities, such as sowing seeds and harvesting fruit and vegetables.

With support from the Bupa Foundation Green Community Grants, the allotment group has constructed compost-filled raised beds to shape inclusive, productive growing spaces. These raised beds will make gardening more accessible, ensuring that sanctuary seekers of all ages and abilities can participate fully and benefit from the therapeutic and communal allotment.

The purchase of raised beds has created opportunities for growing culturally relevant foods which don't thrive when grown at ground level in Northern England. For many refugees, cultivating familiar foods from their homeland can be a powerful way to maintain a connection to heritage and culture.

The grant has also provided accessible seating benches, sparking conversation and offering a resting place when needed. The raised beds and benches were built, installed and planted by participants and volunteers working together.

Participants have already praised the new improvements:

'I will now be able to invite my friend who is disabled as she will be able to reach the plants' and 'the seating means I can rest between jobs and so achieve more.'

Maddy Allen, Bradford Refugee Allotment Volunteer, said:

"We are delighted to have received support from Bupa Foundation to make our growing space at the allotment more accessible. We have operated for over 15 years, supporting refugees and asylum seekers across Bradford to grow their own food, enjoy time in nature and connect to the land. Our new seating and raised beds will make our space more welcoming and accessible to all and allows us to increase the space's crop productivity – providing food for everyone who joins."



GREEN COMMUNITY GRANTS IN ACTION

ENGLAND

R-Urban Poplar, Public Works

Funding £2,000

Public Works are a non-profit design practice bringing about positive social and environmental change in cities. The group was awarded £2,000 for their bug club project at R-Urban Poplar, an eco-civic hub and community garden, which brought local young people together in a series of hands-on workshops to create new wildlife habitats for critters.

Angharad Davies, Bug Club Programme Coordinator and Director at Public Works, said: “The Green Community Grant has enabled us to work directly with young people to create meaningful, hands-on environmental projects that build skills, strengthen stronger connection to nature in their local area and most importantly get us messy!”



[PLAY VIDEO](#)

Freightliners Farm Ltd

Funding £2,000

Freightliners Farm Ltd provide a biodiverse, open access green farm space which allows people in London to benefit from connection with animals, nature and each other. Funding of £2,000 has enabled them to undertake some renovation work, build new beds and get children and young people involved in nature-based activities.

Liz McAllister, Farm Manager, said: “This project provides young people with hands-on opportunities to engage with nature, build skills and develop a sense of ownership of their local green space, while supporting biodiversity and community wellbeing.”



[PLAY VIDEO](#)

FULL LIST OF GRANTS APPROVED IN 2025/26

Applicant	Award Amount
Abbeyfield School	£2,000.00
Abbotswood Junior School	£2,000.00
Aclet Close Nursery School	£500.00
Afghanistan and Central Asian Association (ACAA)	£2,000.00
Age UK Darlington and North Yorkshire	£1,900.00
All Saints Primary School	£2,000.00
Angel Road Schools	£1,920.00
Ark Castledown Primary Academy	£2,000.00
Armada FC	£2,000.00
Aspire Ryde	£1,890.99
Ballyhornan & District Community Association	£1515.71
BARC (Bridgend Adult Resource Centre) Bridgend Community Outreach Centre CIC	£1,450.00
Baysgarth School	£2,000.00
BEAP Community Partnership	£2,000.00
Beckery Island Regeneration Trust	£1,991.73
Bee Together Community Centre and Garden	£1,495.00
Beech Court Tenant and Resident's Association	£2,000.00
Beeston Hill St Luke's Primary School	£2,000.00
Benfield School	£2,000.00
Bentley CE Primary School	£2,000.00
Bierley Community Association Ltd	£2,000.00
Big Issue Changing Lives CIC	£1,920.00
Birchfield Neighbourhood Forum	£2,000.00
Birdlip Primary School	£2,000.00
Birstall Primary Academy	£2,000.00
Bitterne Church of England voluntary controlled Primary School	£1,869.74
Blackpool Council	£1,940.00

Applicant	Award Amount
Bonus Pastor Catholic College	£1,000.00
Boyne Hockey Club CLG	£2,000.00
Brandling Primary School	£2,000.00
Brighter Living Partnership	£1,690.00
Brighton Youth Centre	£2,000.00
Brunton First School	£1,930.00
Bryncethin Primary School	£2,000.00
BS13 Family and Friends	£2,000.00
Burnside Centre	£2,000.00
Business for Youth in Newton le Willows (BFY)	£750.00
Cairde Bhunscoil Bheann Mhadagáin	£2,000.00
Castle Bromwich Hall and Gardens Trust	£1,786.00
CETMA	£1,984.50
Champions Community Sport and Health CIC	£1,950.00
Cippenham School	£2,000.00
Climate Action Strathaven	£1,050.00
Coach House Regeneration Ltd	£2,000.00
Colonel Frank Seely Academy	£1,105.32
Community VISION	£2,000.00
Community Welfare Services	£2,000.00
Crea8ing Community	£2,000.00
Crompton Primary PTA	£2,000.00
Crowmoor Primary	£2,000.00
Currynierin Community Association	£2,000.00
Dame Dorothy Primary School	£2,000.00
Deaf Action	£1,304.00
Deansfield Primary School	£2,000.00

FULL LIST OF GRANTS APPROVED IN 2025/26

Applicant	Award Amount
Dereham COE Infant and Nursery Academy	£1,983.60
Duloe Parish Council	£1,100.00
ecobirmingham	£1,976.42
Elevate Together CIC	£2,000.00
Elm Grove Primary School, Worthing	£2,000.00
Elm Grove PTA	£1,995.00
Emerge 3RS	£2,000.00
Emmanuel Holcombe CE Primary School	£1,904.95
Emmaus Catholic and C of E Primary School	£1,997.00
Fieldhead Primary Academy	£2,000.00
Fishergate Primary School	£1,946.14
Flash Company Arts CIC	£2,000.00
Forever Young Nottingham CIC	£1,950.50
Freedom Community Alliance	£2,000.00
Freightliners Farm Ltd	£2,000.00
Friendly Faces of Kent	£2,000.00
Friends and Family Fundraising (FAFF) of Market Rasen CE Primary School	£2,000.00
Friends of Chapel Street Park	£1,990.86
Friends of Concord Park and Wooley Wood	£1,227.00
Friends of Ley Hill Park	£1,450.00
Friends of Limington House	£2,000.00
Friends of Old Town School	£2,000.00
Friends of Rathfern	£1,910.00
Friends of Ravenshall	£1,960.00
Friends of South Elmsall Library	£1,900.00
Friends of Southwood Park (FOSP)	£784.80
Friends Of St Uny Academy	£2,000.00

Applicant	Award Amount
Friends of the Free School	£1,700.00
Friends of Victoria Park, Stretford	£2,000.00
Gaelscoil Ghleann Darach	£1,980.00
Gaia Giving CIC	£1,810.00
Gateway Building Trust	£2,000.00
Glenfrome Primary School	£2,000.00
Gorse Hall Primary School	£1,904.07
Govanhill Baths Community Trust	£1,900.00
Grangetown Primary School	£1,968.17
Greave Primary School	£1,500.00
Greenfingers Charity	£2,000.00
Grow For Life	£1,800.00
Guillemont Junior School	£1,973.74
Haberdashers' Knights Primary	£2,000.00
Hackney Marsh Partnership	£2,000.00
Hall Road Academy	£2,000.00
Hallwood Park Primary and Nursery	£2,000.00
Hanover Primary School	£2,000.00
Harwood Meadows Primary School	£1,949.98
Hazelbury Primary School	£1,980.00
Heol Chwarae Rol Ltd	£2,000.00
Hockliffe Lower School	£1,445.96
Hollin Primary School	£2,000.00
Holy Family Catholic Primary School	£1,934.57
Home Start Berkshire East	£2,000.00
Homeless Oxfordshire	£1,850.00
Homerton Hope: NHS Foundation Trust / Registered Charity Arm	£2,000.00

FULL LIST OF GRANTS APPROVED IN 2025/26

Applicant	Award Amount
Hope Housing, Training and Support Ltd	£2,000.00
Hunslet Carr Primary School	£2,000.00
Hunslet Moor Primary School	£2,000.00
Ickworth Park Primary School	£2,000.00
Ideal for All	£2,000.00
Ignite Life	£2,000.00
Ingrave Johnstone Parents Association	£2,000.00
Jewish Action for Mental Health (JAMH)	£2,000.00
John Shelton Primary School	£2,000.00
Kingsmead Primary School	£2,000.00
Kingston Hill Community Group	£471.45
Kingston Primary School	£2,000.00
Knightwood Primary School	£1,954.00
Laleham Primary School	£2,000.00
Leaside	£2,000.00
Light Oaks Infant School	£2,000.00
Lincoln Courts Youth & Community Association	£2,000.00
Livin Housing	£2,000.00
Lloyd Park Children's Charity	£2,000.00
Local Food First CIC	£1,985.00
Longmeadow Primary School	£1,980.00
Maple Cross PTA	£2,000.00
Marsh Street Arches and Gardens CIC	£1,950.00
Meadowfield Primary School	£1,200.00
Millbrook Primary School	£2,000.00
Milton Keynes Play Association	£1,996.36
Milton St John's CE Primary School	£2,000.00

Applicant	Award Amount
More Trees for Bath and North East Somerset	£1,990.00
Motiv8	£2,000.00
Moulsecoomb Forest Garden and Wildlife Project	£1,957.00
Muslim Women's Council	£2,000.00
Napier Community Primary & Nursery Academy	£2,000.00
Neighbourhood Resource Centre (NRC)	£1,920.00
Nether Edge Primary School	£2,000.00
Newport Primary School	£1,972.60
No Fuss Meals for Busy Parents CIC	£2,000.00
North Glasgow Community Food Initiative	£2,000.00
Northgate High School	£2,000.00
Norton Hall Children & Family Centre	£2,000.00
Oakhill Primary School	£1,999.40
Oasis Academy Immingham	£1,992.00
Oasis Academy Pinewood	£2,000.00
Octopus Community Network	£1,988.73
Open House Community CIC	£2,000.00
Oulton Primary School	£2,000.00
Our Lady of the Rosary Primary School	£2,000.00
Our Lady of the Visitation Catholic Primary School	£2,000.00
People's Empowerment Alliance for Custom House	£2,000.00
Portishead Primary School	£2,000.00
Priory Park Amateur Boxing Club	£1,865.00
Public Works	£2,000.00
Queensbridge Primary School	£2,000.00
Raising Health	£2,000.00
Redburn Loughview Community Forum	£2,000.00

FULL LIST OF GRANTS APPROVED IN 2025/26

Applicant	Award Amount
Redcatch Community Garden	£2,000.00
Refreshing Minds	£2,000.00
Rethink Mental Illness	£2,000.00
River Bourne Community Farm CIC	£1,500.00
Rosebank Primary School	£1,790.00
Rosebery School – part of GLF Multi Academy Trust	£2,000.00
Rowlatts Mead Primary Academy	£1,998.72
Royal Borough of Kensington and Chelsea Council	£2,000.00
Royal British Legion Industries	£2,000.00
Ryders Green Primary School	£2,000.00
Saint Joseph's Nursery School	£2,000.00
Savile Town I&N School	£1,050.00
School 21	£1,008.00
Seely Primary School	£1,860.00
Shildon Alive	£2,000.00
Shire Oak CE Primary School	£1,982.00
Sledmere Primary School	£1,999.88
Slough Refugee Support (SRS)	£2,000.00
Society for Horticultural Therapy (Thrive)	£2,000.00
SocietyLinks Tower Hamlets	£2,000.00
Something More for You Ltd	£1,990.00
South Hetton Primary School	£1,998.00
South Street Community Primary School	£2,000.00
Southern Hospice Group	£2,000.00
Southmead Development Trust	£1,920.00
Springfield Community Primary	£2,000.00
St Aidan's Catholic Primary School	£1,995.55

Applicant	Award Amount
St Angela's Parent Council	£2,000.00
St Columba's PTA	£1,493.15
St Cuthbert's Catholic High School	£1,993.00
St Hilda's East	£2,000.00
St John and St James C of E Primary School	£2,000.00
St John the Baptist Primary School	£2,000.00
St John the Divine	£2,000.00
St Joseph's Catholic Primary School	£2,000.00
St Luke's Church – part of the Catford and (Southend) Downham Parish	£2,000.00
St Paul's C.E. Primary School	£1,604.00
St Paul's Infant School	£2,000.00
St Paul's Primary School – part of Vantage CE Academy Trust	£2,000.00
St Peter's Catholic Primary School	£2,000.00
Stanningley Primary	£2,000.00
Steel City Community Consultancy Ltd	£2,000.00
Stillness Juniors PTA	£1,816.99
Stonebridge City Farm	£2,000.00
Summerfield Primary School	£2,000.00
Sussex Community Development Association	£2,000.00
Swansea Community Farm	£2,000.00
Swansea Mosque and Islamic Community Centre	£2,000.00
Tees Valley Community Church @ The Shack	£1,999.80
Tempo Maguires GAC	£2,000.00
Thanet Martial Arts Centre / Thanet Judokwai	£2,000.00
The Aspire Academy	£2,000.00
The Baring Trust	£2,000.00
The Birley Academy	£1,980.00

FULL LIST OF GRANTS APPROVED IN 2025/26

Applicant	Award Amount
The Conservation Volunteers	£2,000.00
The Delicate Mind C.I.C	£2,000.00
The Dingle Primary School	£2,000.00
The Duke Of Edinburgh's Award Perth & Kinross Association SCIO	£2,000.00
The Gardeners Co. CIC	£1,996.00
The Gardeners' House – Penzance CIO	£890.00
The Gattons Infant School	£2,000.00
The Growing Space (Wincanton) Ltd.	£2,000.00
The Hyndburn Academy	£2,000.00
The Isle of Wight VI Form	£2,000.00
The Meath Epilepsy Charity	£2,000.00
The Nebula Federation	£2,000.00
The Patchwork Meadow	£1,358.47
The Ridge Academy	£2,000.00
The Rock Youth Project	£2,000.00
The Village Hub Community Ltd	£2,000.00
The Warren Mead Schools Parent and Friends Association	£2,000.00
The Wee Retreat CIC	£2,000.00
Think and Do Camden	£1,999.08
Thomas Ashton School	£2,000.00
Thomas Tallis Secondary School	£1,630.00
Towell Building Trust Ltd	£1,784.89
Triangle Adventure Playground Association	£2,000.00
Trinity C of E Primary School	£2,000.00
Turning Tides Homelessness	£700.00
Ulster Tower Street Community Development Association	£1,985.88

Applicant	Award Amount
Urbanwise London	£1,505.00
Usworth Colliery Primary school	£2,000.00
Valley Invicta Primary School at East Borough	£2,000.00
Vanclaron Chats CIC	£2,000.00
Veterans Response CIC	£1,800.00
Walsall Working For Change CIC	£1,660.00
Warming up the Homeless	£2,000.00
Washwood Heath Academy	£1,998.99
West Bowling Community Advice and Training Centre	£1,974.00
West End Women and Girls Centre	£2,000.00
West Lancashire Borough Council	£2,000.00
West Marsh Development Trust	£1,916.00
Westgate Primary School – part of Cygnus Academies Trust	£2,000.00
Westwood and Coldhurst Women's Association	£2,000.00
Westwood Primary School	£2,000.00
Wheelwright Lane Primary School	£2,000.00
Whitecote Primary School	£1,895.00
Willow Tree Primary School – part of Vantage CE Academy Trust	£2,000.00
Women and Refugees Allotment Group at Scotchman Road	£1,047.60
Wykebeck Primary School	£1,920.00
Yachad Foundation	£2,000.00
YMCA DownsLink Group	£1,999.47
Young and Inspired	£1,960.00
Your Park Bristol and Bath	£2,000.00
Ysgol Eifonydd	£1,905.20

LOOKING AHEAD GREEN COMMUNITY GRANTS IN 2026

Since the programme began in 2023, the Bupa Foundation have invested over £1.4m in more than 794 local projects.

This investment has led to more than 386,656 people directly benefitting, and over 658,927 indirectly benefitting. Funding is helping people and places across the UK and Ireland to be healthier and greener.

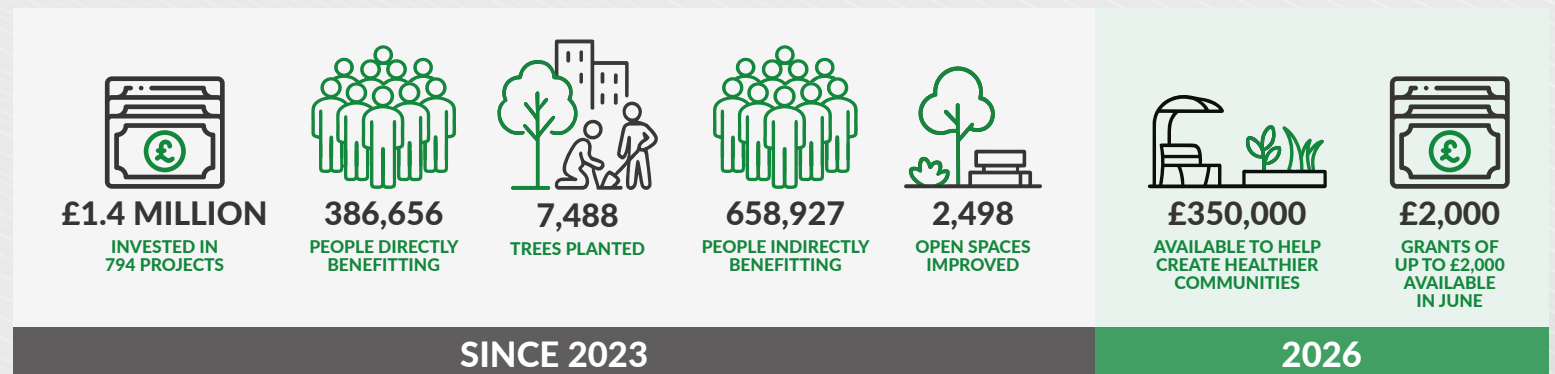
A fourth year of Green Community Grants in 2026. Bupa Foundation and Groundwork are pleased to continue the programme in 2026.

A further £350,000 of funding is available through Bupa Foundation Green Community Grants for projects focused on the regeneration of green spaces in cities for community use.

Together, we will continue to support communities to improve green space, create forest schools, start community allotments and more.

Green Community Grants 2026 is open for applications from 1 - 30 June.

[LEARN MORE](#)





The Bupa Foundation is a company limited by guarantee, registered in England and Wales.

 @BupaFoundation

 www.linkedin.com/company/bupa-foundation

Registered office: Bupa, 1 Angel Court, London, EC2R 7HJ
Company registration number: 9524970
Charity registration number: 1162759

Groundwork UK is the operating name of the Federation of Groundwork Trusts, a company limited by guarantee.

 @groundwork_uk

 uk.linkedin.com/company/groundworkuk

Company Registration Number: 1900511
Charity Registration Number: 291558